

NEW YORK STATE  
OFFICE OF TEMPORARY AND DISABILITY ASSISTANCE  
40 North Pearl Street, Albany, New York 12243-0001

George E. Pataki  
*Governor*

Brian J. Wing  
*Commissioner*

---

# Temporary and Disability Assistance Statistics

## August 2001

---

### Temporary Assistance

**Recipients of Temporary Assistance numbered 669,974 in August 2001, decreasing 6,008 (-0.9%) from July 2001. Temporary Assistance expenditures totaled \$147,136,715, increasing \$906,816 (+0.6%) over the previous month.**

### Food Stamps

**Food Stamps recipients totaled 1,308,803 in August 2001, decreasing 6,341 (-0.5%) from the previous month. August expenditures for Food Stamps totaled \$115,489,482, increasing slightly over July 2001**

### Supplemental Security Income

**Recipients of SSI (including Mental Hygiene) totaled 634,506, decreasing 2,695 (-0.4%) from July 2001. Related expenditures totaled \$284,244,471, decreasing \$8.1 million (-2.8%) from the previous month.**



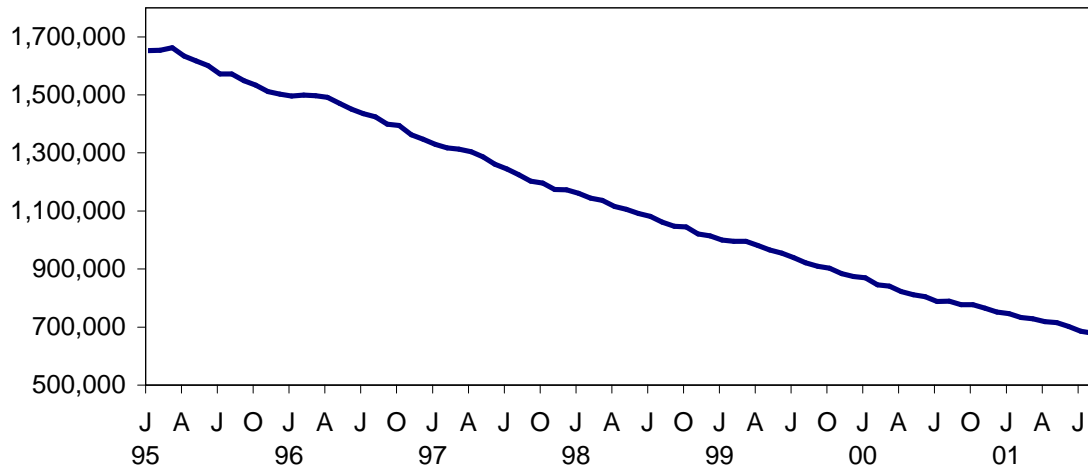
# Table of Contents

## Page Number

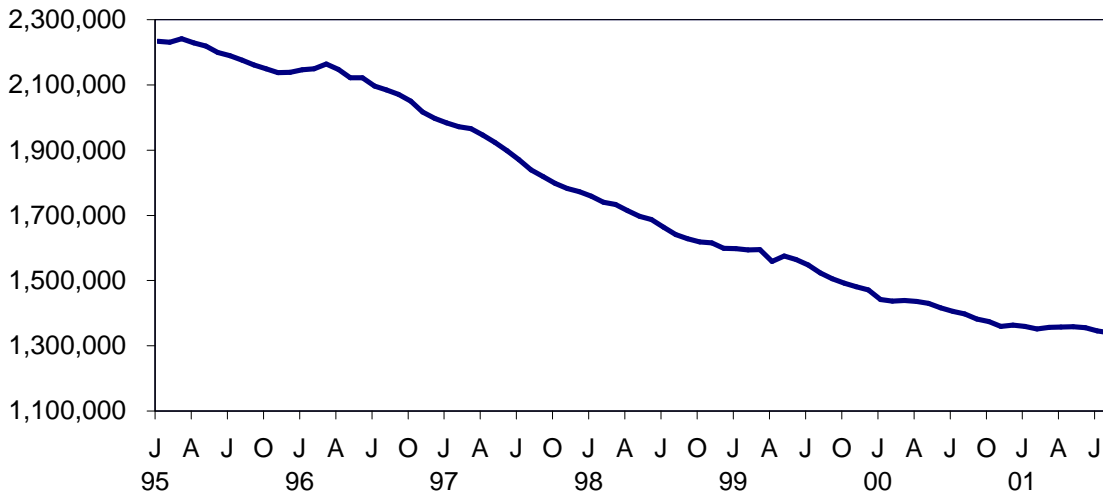
Graphs .....	4
Summary Tables .....	5
Temporary Assistance by Program Area .....	6
Temporary Assistance by Funding Source .....	10
Other Programs .....	18

# NEW YORK STATE JANUARY 1995 - AUGUST 2001

## TEMPORARY ASSISTANCE RECIPIENTS

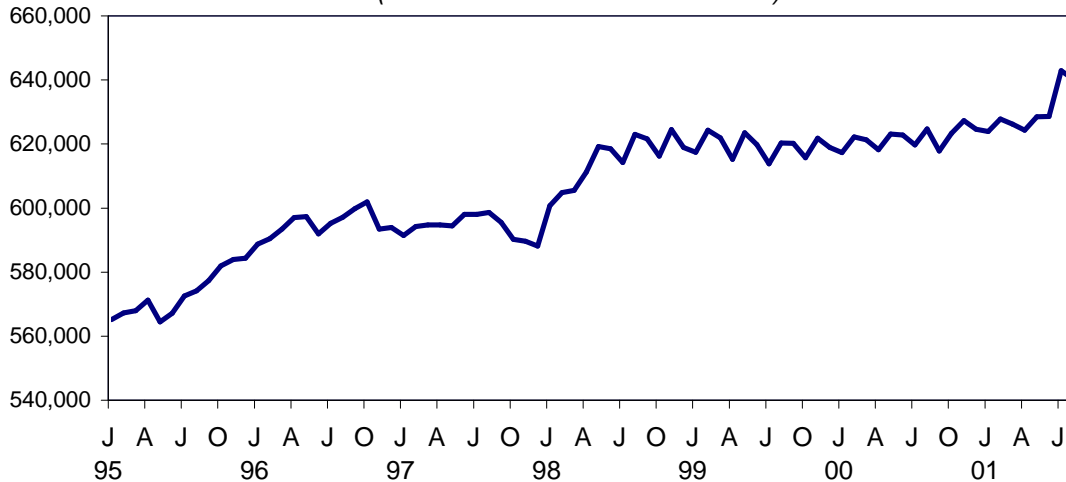


## FOOD STAMPS PERSONS



## SSI PERSONS

(INCLUDING MENTAL HYGIENE)



SELECTED SUMMARY PROGRAM DATA  
BY REGION

Table 1  
TEMPORARY AND DISABILITY ASSISTANCE CASES  
August 2001

Region	Cases				
	Temporary Assistance by Program			Supplemental Security Income	Food Stamps
	Total	Family Assistance	Safety Net Assistance		
New York State	314,728	211,731	102,997	624,002	661,169
New York City	224,441	150,714	73,727	400,852	422,869
Rest of State	90,287	61,017	29,270	223,150	238,300

Table 2  
TEMPORARY AND DISABILITY ASSISTANCE RECIPIENTS  
August 2001

Region	Recipients				
	Temporary Assistance by Program			Supplemental Security Income	Food Stamps
	Total	Family Assistance	Safety Net Assistance		
New York State	669,974	558,990	110,984	624,002	1,308,803
New York City	474,911	396,416	78,495	400,852	817,893
Rest of State	195,063	162,574	32,489	223,150	490,910

Table 3  
TEMPORARY AND DISABILITY ASSISTANCE EXPENDITURES  
August 2001

Region	Expenditures				
	Temporary Assistance by Program			Supplemental Security Income	Food Stamps
	Total	Family Assistance	Safety Net Assistance		
New York State	\$147,136,715	\$111,126,169	\$36,010,546	\$280,711,445	\$115,489,482
New York City	99,379,000	76,588,000	22,791,000	187,617,978	78,118,489
Rest of State	47,757,715	34,538,169	13,219,546	93,093,467	37,370,993

Note: SSI data listed here do not include Mental Hygiene data. See Tables 17 - 19 for total SSI data.

Table 4  
**TEMPORARY ASSISTANCE**  
 Year to Year Monthly Comparison by Local District  
 Cases, Recipients and Expenditures  
 August 2001

Local District	August 2001			August 2000			August 1999		
	Cases	Recipients	Expenditures	Cases	Recipients	Expenditures	Cases	Recipients	Expenditures
New York State	314,728	669,974	\$147,136,715	359,735	780,523	\$161,314,425	412,747	912,723	\$ 177,601,833
New York City*	224,441	474,911	99,379,000	261,769	562,761	111,929,000	298,925	655,633	121,603,000
Rest of State	90,287	195,063	47,757,715	97,966	217,762	49,385,425	113,822	257,090	55,998,833
Albany	3,379	7,577	1,877,018	3,320	7,584	1,740,335	3,721	8,555	1,993,762
Allegany	473	1,064	182,377	554	1,279	195,126	691	1,669	247,650
Broome	1,897	4,063	875,281	2,123	4,822	926,315	2,623	6,183	1,149,031
Cattaraugus	647	1,392	262,249	667	1,442	278,754	747	1,631	282,832
Cayuga	413	918	176,658	415	932	177,357	480	1,044	186,297
Chautauqua	2,047	4,382	888,750	2,063	4,265	823,739	2,260	5,136	884,913
Chemung	853	1,889	354,193	875	2,017	333,997	974	2,261	368,373
Chenango	237	501	103,968	237	511	100,130	290	682	114,769
Clinton	603	1,131	277,253	577	1,138	261,703	604	1,174	245,664
Columbia	399	742	159,341	397	798	170,886	439	930	182,043
Cortland	379	826	207,428	415	947	191,751	442	1,065	186,120
Delaware	180	330	71,063	186	356	68,664	215	412	89,878
Dutchess	1,264	2,434	666,849	1,459	2,940	730,652	1,640	3,452	743,481
Erie	13,210	29,359	5,280,116	16,062	35,921	6,192,783	19,603	44,445	7,464,555
Essex	180	375	83,729	210	412	82,024	251	525	79,984
Franklin	264	505	93,616	322	640	118,464	359	752	122,020
Fulton	347	637	156,815	403	827	170,251	426	886	154,150
Genesee	286	582	126,927	279	591	129,713	279	669	108,083
Greene	405	827	190,537	396	787	175,198	411	843	161,056
Hamilton	11	15	3,403	9	15	2,507	17	27	4,907
Herkimer	297	606	141,914	341	736	129,234	409	911	160,675
Jefferson	983	1,988	435,004	1,109	2,315	488,491	1,268	2,741	503,734
Lewis	98	186	31,512	122	242	42,766	165	344	55,625
Livingston	541	1,036	261,347	459	932	199,364	524	1,108	231,441
Madison	151	276	66,785	181	336	81,997	187	361	73,075
Monroe	14,173	31,637	7,597,522	15,994	37,210	8,145,867	17,986	42,045	8,908,769
Montgomery	272	571	117,931	282	590	136,293	347	714	160,491
Nassau	4,333	8,645	2,489,803	4,869	9,870	2,719,124	5,741	11,884	3,096,300
Niagara	2,431	5,089	1,088,516	2,632	5,461	1,085,452	3,010	6,486	1,216,514
Oneida	2,299	5,668	1,002,365	2,481	6,338	1,067,376	3,117	7,682	1,250,880
Onondaga	6,212	13,555	2,725,594	5,865	13,419	2,597,923	6,382	15,095	2,698,155
Ontario	581	1,098	245,693	537	978	228,523	597	1,249	258,552
Orange	2,918	7,560	1,699,579	2,987	7,861	1,636,769	3,091	8,233	1,629,354
Orleans	458	1,030	216,716	458	1,085	206,270	458	1,071	198,135
Oswego	762	1,629	357,150	812	1,867	365,142	947	2,222	396,841
Otsego	115	184	56,310	119	203	48,374	116	205	45,461
Putnam	119	196	90,734	121	201	75,362	124	223	77,965
Rensselaer	1,269	2,784	586,018	1,159	2,572	513,423	1,330	3,014	559,310
Rockland	1,145	3,252	683,200	1,222	3,562	820,944	1,417	3,947	770,565
St. Lawrence	1,025	2,021	409,452	1,097	2,262	363,792	1,360	2,872	472,566
Saratoga	252	391	108,681	228	376	107,529	269	443	120,642
Schenectady	1,017	2,146	513,058	983	2,265	457,815	1,237	2,976	540,376
Schoharie	104	176	58,320	94	168	68,871	105	200	43,482
Schuyler	120	252	52,019	122	236	51,758	139	276	58,961
Seneca	170	315	73,492	191	381	71,499	179	388	65,005
Steuben	773	1,558	328,759	851	1,768	320,763	1,160	2,514	417,853
Suffolk	6,815	13,917	4,880,763	7,280	15,314	5,171,489	8,601	18,459	5,981,616
Sullivan	540	1,105	280,381	541	1,110	235,712	559	1,269	204,812
Tioga	288	622	137,497	292	616	110,431	368	827	144,784
Tompkins	646	1,226	309,808	639	1,268	289,027	744	1,435	319,212
Ulster	1,254	2,494	665,802	1,145	2,402	543,824	1,512	2,996	694,945
Warren	237	430	97,724	234	465	100,178	203	419	98,947
Washington	330	565	167,391	281	558	124,670	406	765	176,435
Wayne	469	857	203,622	486	959	201,950	632	1,400	254,166
Westchester	9,340	19,931	7,425,048	10,517	23,101	7,587,867	12,395	27,466	9,247,270
Wyoming	194	375	82,440	183	345	83,516	167	317	62,316
Yates	82	143	32,194	83	166	35,691	98	192	34,035

\* Expenditures partially estimated.

Table 5  
**TEMPORARY ASSISTANCE**  
Cases, Recipients, Children, Adults and Expenditures by Local District  
August 2001

Local District	Temporary Assistance				
	Cases	Recipients	Children	Adults	Expenditures
New York State	314,728	669,974	398,892	271,082	\$147,136,715
New York City*	224,441	474,911	278,503	196,408	99,379,000
Rest of State	90,287	195,063	120,389	74,674	47,757,715
Albany	3,379	7,577	4,644	2,933	1,877,018
Allegany	473	1,064	662	402	182,377
Broome	1,897	4,063	2,564	1,499	875,281
Cattaraugus	647	1,392	860	532	262,249
Cayuga	413	918	607	311	176,658
Chautauqua	2,047	4,382	2,632	1,750	888,750
Chemung	853	1,889	1,243	646	354,193
Chenango	237	501	336	165	103,968
Clinton	603	1,131	655	476	277,253
Columbia	399	742	441	301	159,341
Cortland	379	826	481	345	207,428
Delaware	180	330	205	125	71,063
Dutchess	1,264	2,434	1,578	856	666,849
Erie	13,210	29,359	18,038	11,321	5,280,116
Essex	180	375	216	159	83,729
Franklin	264	505	315	190	93,616
Fulton	347	637	373	264	156,815
Genesee	286	582	356	226	126,927
Greene	405	827	469	358	190,537
Hamilton	11	15	6	9	3,403
Herkimer	297	606	394	212	141,914
Jefferson	983	1,988	1,115	873	435,004
Lewis	98	186	109	77	31,512
Livingston	541	1,036	525	511	261,347
Madison	151	276	205	71	66,785
Monroe	14,173	31,637	19,600	12,037	7,597,522
Montgomery	272	571	360	211	117,931
Nassau	4,333	8,645	5,590	3,055	2,489,803
Niagara	2,431	5,089	3,084	2,005	1,088,516
Oneida	2,299	5,668	3,672	1,996	1,002,365
Onondaga	6,212	13,555	8,504	5,051	2,725,594
Ontario	581	1,098	609	489	245,693
Orange	2,918	7,560	5,038	2,522	1,699,579
Orleans	458	1,030	605	425	216,716
Oswego	762	1,629	1,057	572	357,150
Otsego	115	184	118	66	56,310
Putnam	119	196	106	90	90,734
Rensselaer	1,269	2,784	1,692	1,092	586,018
Rockland	1,145	3,252	2,154	1,098	683,200
St.Lawrence	1,025	2,021	1,134	887	409,452
Saratoga	252	391	294	97	108,681
Schenectady	1,017	2,146	1,475	671	513,058
Schoharie	104	176	112	64	58,320
Schuyler	120	252	158	94	52,019
Seneca	170	315	192	123	73,492
Steuben	773	1,558	912	646	328,759
Suffolk	6,815	13,917	8,544	5,373	4,880,763
Sullivan	540	1,105	734	371	280,381
Tioga	288	622	394	228	137,497
Tompkins	646	1,226	676	550	309,808
Ulster	1,254	2,494	1,610	884	665,802
Warren	237	430	236	194	97,724
Washington	330	565	323	242	167,391
Wayne	469	857	531	326	203,622
Westchester	9,340	19,931	11,562	8,369	7,425,048
Wyoming	194	375	210	165	82,440
Yates	82	143	74	69	32,194

\* Expenditures partially estimated.

Table 6  
**FAMILY ASSISTANCE**  
Cases, Recipients, Children, Adults and Expenditures by Local District  
August 2001

Local District	Family Assistance				
	Cases	Recipients	Children	Adults	Expenditures
New York State	211,731	558,990	393,754	165,236	\$111,126,169
New York City*	150,714	396,416	276,699	119,717	76,588,000
Rest of State	61,017	162,574	117,055	45,519	34,538,169
Albany	2,478	6,606	4,577	2,029	1,367,775
Allegany	363	943	657	286	148,455
Broome	1,325	3,402	2,473	929	621,551
Cattaraugus	462	1,186	842	344	192,005
Cayuga	324	813	590	223	138,280
Chautauqua	1,442	3,716	2,571	1,145	699,020
Chemung	658	1,679	1,220	459	279,733
Chenango	179	437	328	109	72,035
Clinton	381	875	630	245	176,826
Columbia	280	615	432	183	118,782
Cortland	263	690	466	224	143,048
Delaware	121	266	202	64	49,573
Dutchess	842	1,956	1,491	465	458,865
Erie	9,125	25,047	17,849	7,198	3,842,890
Essex	121	312	214	98	55,388
Franklin	193	433	313	120	68,756
Fulton	232	506	359	147	94,283
Genesee	182	474	347	127	82,424
Greene	283	697	460	237	140,819
Hamilton	6	10	6	4	1,986
Herkimer	218	521	384	137	108,800
Jefferson	637	1,614	1,091	523	280,223
Lewis	66	149	104	45	22,594
Livingston	333	803	500	303	170,602
Madison	114	237	199	38	49,845
Monroe	9,010	25,345	18,433	6,912	5,246,497
Montgomery	178	476	359	117	74,831
Nassau	2,969	7,157	5,450	1,707	1,796,531
Niagara	1,707	4,272	2,984	1,288	796,040
Oneida	1,659	4,955	3,606	1,349	752,809
Onondaga	4,228	11,431	8,320	3,111	1,973,991
Ontario	352	845	585	260	155,444
Orange	2,155	6,710	4,937	1,773	1,344,029
Orleans	340	904	600	304	172,380
Oswego	574	1,431	1,044	387	266,925
Otsego	70	137	116	21	29,008
Putnam	61	129	96	33	59,769
Rensselaer	932	2,432	1,684	748	426,608
Rockland	736	2,789	2,114	675	452,661
St.Lawrence	731	1,718	1,124	594	292,287
Saratoga	179	313	285	28	75,661
Schenectady	743	1,843	1,437	406	375,892
Schoharie	68	137	109	28	31,568
Schuyler	88	218	158	60	38,298
Seneca	112	253	185	68	49,858
Steuben	510	1,278	894	384	212,847
Suffolk	4,138	10,956	8,211	2,745	3,715,895
Sullivan	397	956	726	230	202,509
Tioga	232	564	390	174	110,865
Tompkins	410	971	653	318	186,562
Ulster	897	2,075	1,538	537	488,463
Warren	144	333	232	101	60,487
Washington	206	437	311	126	95,856
Wayne	285	663	515	148	132,449
Westchester	6,108	16,456	11,377	5,079	5,459,851
Wyoming	126	301	205	96	58,755
Yates	44	102	72	30	17,985

\* Expenditures partially estimated.



Table 7  
**SAFETY NET ASSISTANCE**  
Cases, Recipients, Children, Adults and Expenditures by Local District  
August 2001

Local District	Safety Net Assistance				
	Cases	Recipients	Children	Adults	Expenditures
New York State	102,997	110,984	5,138	105,846	\$36,010,546
New York City*	73,727	78,495	1,804	76,691	22,791,000
Rest of State	29,270	32,489	3,334	29,155	13,219,546
Albany	901	971	67	904	509,243
Allegany	110	121	5	116	33,922
Broome	572	661	91	570	253,730
Cattaraugus	185	206	18	188	70,244
Cayuga	89	105	17	88	38,378
Chautauqua	605	666	61	605	189,730
Chemung	195	210	23	187	74,460
Chenango	58	64	8	56	31,933
Clinton	222	256	25	231	100,427
Columbia	119	127	9	118	40,559
Cortland	116	136	15	121	64,380
Delaware	59	64	3	61	21,490
Dutchess	422	478	87	391	207,984
Erie	4,085	4,312	189	4,123	1,437,226
Essex	59	63	2	61	28,341
Franklin	71	72	2	70	24,860
Fulton	115	131	14	117	62,532
Genesee	104	108	9	99	44,503
Greene	122	130	9	121	49,718
Hamilton	5	5	0	5	1,417
Herkimer	79	85	10	75	33,114
Jefferson	346	374	24	350	154,781
Lewis	32	37	5	32	8,918
Livingston	208	233	25	208	90,745
Madison	37	39	6	33	16,940
Monroe	5,163	6,292	1,167	5,125	2,351,025
Montgomery	94	95	1	94	43,100
Nassau	1,364	1,488	140	1,348	693,272
Niagara	724	817	100	717	292,476
Oneida	640	713	66	647	249,556
Onondaga	1,984	2,124	184	1,940	751,603
Ontario	229	253	24	229	90,249
Orange	763	850	101	749	355,550
Orleans	118	126	5	121	44,336
Oswego	188	198	13	185	90,225
Otsego	45	47	2	45	27,302
Putnam	58	67	10	57	30,965
Rensselaer	337	352	8	344	159,410
Rockland	409	463	40	423	230,539
St. Lawrence	294	303	10	293	117,165
Saratoga	73	78	9	69	33,020
Schenectady	274	303	38	265	137,166
Schoharie	36	39	3	36	26,752
Schuyler	32	34	0	34	13,721
Seneca	58	62	7	55	23,634
Steuben	263	280	18	262	115,912
Suffolk	2,677	2,961	333	2,628	1,164,868
Sullivan	143	149	8	141	77,872
Tioga	56	58	4	54	26,632
Tompkins	236	255	23	232	123,246
Ulster	357	419	72	347	177,339
Warren	93	97	4	93	37,237
Washington	124	128	12	116	71,535
Wayne	184	194	16	178	71,173
Westchester	3,232	3,475	185	3,290	1,965,197
Wyoming	68	74	5	69	23,685
Yates	38	41	2	39	14,209

\* Expenditures partially estimated.

Table 8  
 TEMPORARY ASSISTANCE BY FUNDING SOURCE  
 Cases, Recipients and Expenditures by Local District  
 August 2001

Local District	Total			Federally Participating - TANF Family Assistance and Safety Net - FP			Federally Non-Participating Safety Net Assistance - FNP		
	Cases	Recipients	Expenditures	Cases	Recipients	Expenditures	Cases	Recipients	Expenditures
New York State	314,728	669,974	\$147,136,715	213,111	562,627	\$111,940,753	101,617	107,347	\$35,195,962
New York City*	224,441	474,911	99,379,000	150,879	396,826	76,637,000	73,562	78,085	22,742,000
Rest of State	90,287	195,063	47,757,715	62,232	165,801	35,303,753	28,055	29,262	12,453,962
Albany	3,379	7,577	1,877,018	2,502	6,677	1,380,453	877	900	496,565
Allegany	473	1,064	182,377	363	943	148,455	110	121	33,922
Broome	1,897	4,063	875,281	1,358	3,486	636,983	539	577	238,298
Cattaraugus	647	1,392	262,249	466	1,198	193,078	181	194	69,171
Cayuga	413	918	176,658	329	830	140,945	84	88	35,713
Chautauqua	2,047	4,382	888,750	1,474	3,787	709,948	573	595	178,802
Chemung	853	1,889	354,193	663	1,691	282,985	190	198	71,208
Chenango	237	501	103,968	181	444	72,897	56	57	31,071
Clinton	603	1,131	277,253	393	907	184,937	210	224	92,316
Columbia	399	742	159,341	280	615	118,782	119	127	40,559
Cortland	379	826	207,428	268	706	145,601	111	120	61,827
Delaware	180	330	71,063	122	267	49,861	58	63	21,202
Dutchess	1,264	2,434	666,849	864	2,007	469,647	400	427	197,202
Erie	13,210	29,359	5,280,116	9,165	25,162	3,858,811	4,045	4,197	1,421,305
Essex	180	375	83,729	121	312	55,388	59	63	28,341
Franklin	264	505	93,616	193	433	68,756	71	72	24,860
Fulton	347	637	156,815	237	520	96,063	110	117	60,752
Genesee	286	582	126,927	184	476	83,552	102	106	43,375
Greene	405	827	190,537	284	698	141,754	121	129	48,783
Hamilton	11	15	3,403	6	10	1,986	5	5	1,417
Herkimer	297	606	141,914	220	525	109,583	77	81	32,331
Jefferson	983	1,988	435,004	656	1,652	288,291	327	336	146,713
Lewis	98	186	31,512	66	149	22,594	32	37	8,918
Livingston	541	1,036	261,347	352	838	182,715	189	198	78,632
Madison	151	276	66,785	114	237	49,845	37	39	16,940
Monroe	14,173	31,637	7,597,522	9,548	26,845	5,599,231	4,625	4,792	1,998,291
Montgomery	272	571	117,931	178	476	74,831	94	95	43,100
Nassau	4,333	8,645	2,489,803	3,020	7,279	1,830,040	1,313	1,366	659,763
Niagara	2,431	5,089	1,088,516	1,749	4,389	817,693	682	700	270,823
Oneida	2,299	5,668	1,002,365	1,686	5,015	768,254	613	653	234,111
Onondaga	6,212	13,555	2,725,594	4,257	11,507	1,990,105	1,955	2,048	735,489
Ontario	581	1,098	245,693	359	870	157,819	222	228	87,874
Orange	2,918	7,560	1,699,579	2,181	6,778	1,356,531	737	782	343,048
Orleans	458	1,030	216,716	340	904	172,380	118	126	44,336
Oswego	762	1,629	357,150	578	1,441	268,440	184	188	88,710
Otsego	115	184	56,310	73	142	31,062	42	42	25,248
Putnam	119	196	90,734	64	137	61,894	55	59	28,840
Rensselaer	1,269	2,784	586,018	936	2,442	428,732	333	342	157,286
Rockland	1,145	3,252	683,200	756	2,843	465,119	389	409	218,081
St. Lawrence	1,025	2,021	409,452	733	1,723	292,457	292	298	116,995
Saratoga	252	391	108,681	179	313	75,661	73	78	33,020
Schenectady	1,017	2,146	513,058	759	1,877	383,273	258	269	129,785
Schoharie	104	176	58,320	68	137	31,568	36	39	26,752
Schuyler	120	252	52,019	88	218	38,298	32	34	13,721
Seneca	170	315	73,492	117	261	53,417	53	54	20,075
Steuben	773	1,558	328,759	514	1,287	216,848	259	271	111,911
Suffolk	6,815	13,917	4,880,763	4,217	11,186	3,794,879	2,598	2,731	1,085,884
Sullivan	540	1,105	280,381	398	960	202,727	142	145	77,654
Tioga	288	622	137,497	234	567	111,398	54	55	26,099
Tompkins	646	1,226	309,808	421	989	191,167	225	237	118,641
Ulster	1,254	2,494	665,802	937	2,172	512,931	317	322	152,871
Warren	237	430	97,724	144	333	60,487	93	97	37,237
Washington	330	565	167,391	208	439	96,660	122	126	70,731
Wayne	469	857	203,622	289	672	135,055	180	185	68,567
Westchester	9,340	19,931	7,425,048	6,168	16,621	5,513,197	3,172	3,310	1,911,851
Wyoming	194	375	82,440	128	306	59,704	66	69	22,736
Yates	82	143	32,194	44	102	17,985	38	41	14,209

\* Expenditures partially estimated.

Table 9  
 TEMPORARY ASSISTANCE TO NEEDY FAMILIES (TANF) - FP BY PROGRAM  
 Cases, Recipients, Children, Adults and Expenditures by Local District  
 August 2001

Local District	Family Assistance					Safety Net Assistance - FP				
	Cases	Recipients	Children	Adults	Expenditures	Cases	Recipients	Children	Adults	Expenditures
New York State	211,731	558,990	393,754	165,236	\$111,126,169	1,380	3,637	2,231	1,406	\$814,584
New York City*	150,714	396,416	276,699	119,717	76,588,000	165	410	229	181	49,000
Rest of State	61,017	162,574	117,055	45,519	34,538,169	1,215	3,227	2,002	1,225	765,584
Albany	2,478	6,606	4,577	2,029	1,367,775	24	71	45	26	12,678
Allegany	363	943	657	286	148,455	0	0	0	0	0
Broome	1,325	3,402	2,473	929	621,551	33	84	47	37	15,432
Cattaraugus	462	1,186	842	344	192,005	4	12	8	4	1,073
Cayuga	324	813	590	223	138,280	5	17	11	6	2,665
Chautauqua	1,442	3,716	2,571	1,145	699,020	32	71	45	26	10,928
Chemung	658	1,679	1,220	459	279,733	5	12	7	5	3,252
Chenango	179	437	328	109	72,035	2	7	5	2	862
Clinton	381	875	630	245	176,826	12	32	19	13	8,111
Columbia	280	615	432	183	118,782	0	0	0	0	0
Cortland	263	690	466	224	143,048	5	16	10	6	2,553
Delaware	121	266	202	64	49,573	1	1	0	1	288
Dutchess	842	1,956	1,491	465	458,865	22	51	29	22	10,782
Erie	9,125	25,047	17,849	7,198	3,842,890	40	115	71	44	15,921
Essex	121	312	214	98	55,388	0	0	0	0	0
Franklin	193	433	313	120	68,756	0	0	0	0	0
Fulton	232	506	359	147	94,283	5	14	9	5	1,780
Genesee	182	474	347	127	82,424	2	2	0	2	1,128
Greene	283	697	460	237	140,819	1	1	0	1	935
Hamilton	6	10	6	4	1,986	0	0	0	0	0
Herkimer	218	521	384	137	108,800	2	4	3	1	783
Jefferson	637	1,614	1,091	523	280,223	19	38	15	23	8,068
Lewis	66	149	104	45	22,594	0	0	0	0	0
Livingston	333	803	500	303	170,602	19	35	17	18	12,113
Madison	114	237	199	38	49,845	0	0	0	0	0
Monroe	9,010	25,345	18,433	6,912	5,246,497	538	1,500	982	518	352,734
Montgomery	178	476	359	117	74,831	0	0	0	0	0
Nassau	2,969	7,157	5,450	1,707	1,796,531	51	122	72	50	33,509
Niagara	1,707	4,272	2,984	1,288	796,040	42	117	73	44	21,653
Oneida	1,659	4,955	3,606	1,349	752,809	27	60	35	25	15,445
Onondaga	4,228	11,431	8,320	3,111	1,973,991	29	76	44	32	16,114
Ontario	352	845	585	260	155,444	7	25	16	9	2,375
Orange	2,155	6,710	4,937	1,773	1,344,029	26	68	38	30	12,502
Orleans	340	904	600	304	172,380	0	0	0	0	0
Oswego	574	1,431	1,044	387	266,925	4	10	6	4	1,515
Otsego	70	137	116	21	29,008	3	5	2	3	2,054
Putnam	61	129	96	33	59,769	3	8	4	4	2,125
Rensselaer	932	2,432	1,684	748	426,608	4	10	6	4	2,124
Rockland	736	2,789	2,114	675	452,661	20	54	34	20	12,458
St.Lawrence	731	1,718	1,124	594	292,287	2	5	2	3	170
Saratoga	179	313	285	28	75,661	0	0	0	0	0
Schenectady	743	1,843	1,437	406	375,892	16	34	18	16	7,381
Schoharie	68	137	109	28	31,568	0	0	0	0	0
Schuyler	88	218	158	60	38,298	0	0	0	0	0
Seneca	112	253	185	68	49,858	5	8	3	5	3,559
Steuben	510	1,278	894	384	212,847	4	9	4	5	4,001
Suffolk	4,138	10,956	8,211	2,745	3,715,895	79	230	149	81	78,984
Sullivan	397	956	726	230	202,509	1	4	2	2	218
Tioga	232	564	390	174	110,865	2	3	1	2	533
Tompkins	410	971	653	318	186,562	11	18	8	10	4,605
Ulster	897	2,075	1,538	537	488,463	40	97	54	43	24,468
Warren	144	333	232	101	60,487	0	0	0	0	0
Washington	206	437	311	126	95,856	2	2	1	1	804
Wayne	285	663	515	148	132,449	4	9	5	4	2,606
Westchester	6,108	16,456	11,377	5,079	5,459,851	60	165	99	66	53,346
Wyoming	126	301	205	96	58,755	2	5	3	2	949
Yates	44	102	72	30	17,985	0	0	0	0	0

\* Expenditures partially estimated.

Table 10  
**SAFETY NET ASSISTANCE - FNP**  
Cases, Recipients, Children, Adults and Expenditures by Local District  
August 2001

Local District	Safety Net Assistance - FNP				
	Cases	Recipients	Children	Adults	Expenditures
New York State	101,617	107,347	2,907	104,440	\$35,195,962
New York City*	73,562	78,085	1,575	76,510	22,742,000
Rest of State	28,055	29,262	1,332	27,930	12,453,962
Albany	877	900	22	878	496,565
Allegany	110	121	5	116	33,922
Broome	539	577	44	533	238,298
Cattaraugus	181	194	10	184	69,171
Cayuga	84	88	6	82	35,713
Chautauqua	573	595	16	579	178,802
Chemung	190	198	16	182	71,208
Chenango	56	57	3	54	31,071
Clinton	210	224	6	218	92,316
Columbia	119	127	9	118	40,559
Cortland	111	120	5	115	61,827
Delaware	58	63	3	60	21,202
Dutchess	400	427	58	369	197,202
Erie	4,045	4,197	118	4,079	1,421,305
Essex	59	63	2	61	28,341
Franklin	71	72	2	70	24,860
Fulton	110	117	5	112	60,752
Genesee	102	106	9	97	43,375
Greene	121	129	9	120	48,783
Hamilton	5	5	0	5	1,417
Herkimer	77	81	7	74	32,331
Jefferson	327	336	9	327	146,713
Lewis	32	37	5	32	8,918
Livingston	189	198	8	190	78,632
Madison	37	39	6	33	16,940
Monroe	4,625	4,792	185	4,607	1,998,291
Montgomery	94	95	1	94	43,100
Nassau	1,313	1,366	68	1,298	659,763
Niagara	682	700	27	673	270,823
Oneida	613	653	31	622	234,111
Onondaga	1,955	2,048	140	1,908	735,489
Ontario	222	228	8	220	87,874
Orange	737	782	63	719	343,048
Orleans	118	126	5	121	44,336
Oswego	184	188	7	181	88,710
Otsego	42	42	0	42	25,248
Putnam	55	59	6	53	28,840
Rensselaer	333	342	2	340	157,286
Rockland	389	409	6	403	218,081
St.Lawrence	292	298	8	290	116,995
Saratoga	73	78	9	69	33,020
Schenectady	258	269	20	249	129,785
Schoharie	36	39	3	36	26,752
Schuyler	32	34	0	34	13,721
Seneca	53	54	4	50	20,075
Steuben	259	271	14	257	111,911
Suffolk	2,598	2,731	184	2,547	1,085,884
Sullivan	142	145	6	139	77,654
Tioga	54	55	3	52	26,099
Tompkins	225	237	15	222	118,641
Ulster	317	322	18	304	152,871
Warren	93	97	4	93	37,237
Washington	122	126	11	115	70,731
Wayne	180	185	11	174	68,567
Westchester	3,172	3,310	86	3,224	1,911,851
Wyoming	66	69	2	67	22,736
Yates	38	41	2	39	14,209

\* Expenditures partially estimated.

Table 11  
SAFETY NET ASSISTANCE - FNP BY CASE SIZE CATEGORY  
Cases, Recipients, Children, Adults and Expenditures by Local District  
August 2001

Local District	One Person					Multi-Person				
	Cases	Recipients	Children	Adults	Expenditures	Cases	Recipients	Children	Adults	Expenditures
New York State	See Note	See Note	See Note	See Note	See Note	See Note	See Note	See Note	See Note	See Note
New York City	See Note	See Note	See Note	See Note	See Note	See Note	See Note	See Note	See Note	See Note
Rest of State	27,104	27,104	658	26,446	\$11,928,261	951	2,158	674	1,484	\$525,701
Albany	859	859	4	855	490,504	18	41	18	23	6,061
Allegany	100	100	1	99	29,281	10	21	4	17	4,641
Broome	513	513	19	494	224,257	26	64	25	39	14,041
Cattaraugus	171	171	3	168	64,873	10	23	7	16	4,298
Cayuga	80	80	3	77	34,726	4	8	3	5	987
Chautauqua	551	551	7	544	167,160	22	44	9	35	11,642
Chemung	182	182	8	174	67,725	8	16	8	8	3,483
Chenango	55	55	1	54	30,816	1	2	2	0	255
Clinton	201	201	5	196	87,166	9	23	1	22	5,150
Columbia	111	111	4	107	38,601	8	16	5	11	1,958
Cortland	105	105	5	100	59,300	6	15	0	15	2,527
Delaware	53	53	2	51	19,365	5	10	1	9	1,837
Dutchess	381	381	35	346	182,554	19	46	23	23	14,648
Erie	3,929	3,929	48	3,881	1,370,599	116	268	70	198	50,706
Essex	56	56	2	54	27,433	3	7	0	7	908
Franklin	70	70	1	69	24,789	1	2	1	1	71
Fulton	104	104	1	103	57,506	6	13	4	9	3,246
Genesee	99	99	4	95	42,483	3	7	5	2	892
Greene	115	115	4	111	45,911	6	14	5	9	2,872
Hamilton	5	5	0	5	1,417	0	0	0	0	0
Herkimer	75	75	4	71	31,737	2	6	3	3	594
Jefferson	319	319	8	311	142,580	8	17	1	16	4,133
Lewis	29	29	1	28	6,702	3	8	4	4	2,216
Livingston	180	180	5	175	75,232	9	18	3	15	3,400
Madison	36	36	4	32	16,351	1	3	2	1	589
Monroe	4,501	4,501	77	4,424	1,932,602	124	291	108	183	65,689
Montgomery	93	93	0	93	42,800	1	2	1	1	300
Nassau	1,267	1,267	37	1,230	635,025	46	99	31	68	24,738
Niagara	668	668	15	653	262,896	14	32	12	20	7,927
Oneida	580	580	21	559	219,571	33	73	10	63	14,540
Onondaga	1,880	1,880	74	1,806	687,461	75	168	66	102	48,028
Ontario	217	217	5	212	85,751	5	11	3	8	2,123
Orange	707	707	30	677	324,824	30	75	33	42	18,224
Orleans	111	111	1	110	41,603	7	15	4	11	2,733
Oswego	181	181	4	177	87,190	3	7	3	4	1,520
Otsego	42	42	0	42	25,248	0	0	0	0	0
Putnam	51	51	5	46	27,287	4	8	1	7	1,553
Rensselaer	324	324	0	324	154,046	9	18	2	16	3,240
Rockland	371	371	4	367	201,380	18	38	2	36	16,701
St. Lawrence	286	286	6	280	114,941	6	12	2	10	2,054
Saratoga	70	70	5	65	30,529	3	8	4	4	2,491
Schenectady	250	250	11	239	126,251	8	19	9	10	3,534
Schoharie	33	33	1	32	25,645	3	6	2	4	1,107
Schuyler	30	30	0	30	13,069	2	4	0	4	652
Seneca	52	52	3	49	20,075	1	2	1	1	0
Steuben	250	250	3	247	108,625	9	21	11	10	3,286
Suffolk	2,504	2,504	94	2,410	1,009,173	94	227	90	137	76,711
Sullivan	139	139	4	135	76,686	3	6	2	4	968
Tioga	53	53	3	50	25,866	1	2	0	2	233
Tompkins	216	216	8	208	114,050	9	21	7	14	4,591
Ulster	312	312	12	300	150,059	5	10	6	4	2,812
Warren	89	89	3	86	35,650	4	8	1	7	1,587
Washington	119	119	5	114	69,546	3	7	6	1	1,185
Wayne	177	177	5	172	67,292	3	8	6	2	1,275
Westchester	3,054	3,054	40	3,014	1,839,239	118	256	46	210	72,612
Wyoming	63	63	2	61	21,529	3	6	0	6	1,207
Yates	35	35	1	34	13,284	3	6	1	5	925

Note: A breakout of One-Person and Multi-Person cases is not available for New York City.

Table 12  
**SAFETY NET ASSISTANCE - FNP - CASH TOTAL**  
Cases, Recipients, Children, Adults and Expenditures by Local District  
August 2001

Local District	Safety Net Assistance - FNP - Cash Total				
	Cases	Recipients	Children	Adults	Expenditures
New York State	80,754	85,999	2,558	83,441	See Note
New York City	60,405	64,604	1,482	63,122	See Note
Rest of State	20,349	21,395	1,076	20,319	\$8,801,774
Albany	875	898	22	876	495,910
Allegany	100	111	5	106	32,187
Broome	382	416	42	374	157,073
Cattaraugus	164	177	9	168	65,641
Cayuga	60	62	2	60	23,897
Chautauqua	474	494	14	480	144,348
Chemung	157	164	14	150	54,250
Chenango	49	49	1	48	28,322
Clinton	175	189	5	184	75,151
Columbia	106	113	7	106	31,700
Cortland	93	102	4	98	49,200
Delaware	54	59	3	56	17,204
Dutchess	208	232	41	191	95,094
Erie	2,778	2,903	106	2,797	1,002,643
Essex	47	51	0	51	18,823
Franklin	55	56	1	55	18,604
Fulton	74	80	4	76	43,637
Genesee	77	79	5	74	30,447
Greene	105	112	5	107	41,147
Hamilton	5	5	0	5	1,417
Herkimer	63	67	7	60	20,748
Jefferson	225	233	6	227	90,440
Lewis	21	26	5	21	5,388
Livingston	144	153	8	145	55,505
Madison	31	33	6	27	11,431
Monroe	2,601	2,723	149	2,574	1,070,899
Montgomery	84	85	1	84	40,833
Nassau	1,008	1,047	30	1,017	478,011
Niagara	396	410	23	387	137,948
Oneida	465	503	27	476	150,383
Onondaga	1,699	1,786	115	1,671	618,670
Ontario	154	159	8	151	59,835
Orange	449	479	18	461	173,252
Orleans	109	117	4	113	42,265
Oswego	145	149	7	142	67,104
Otsego	32	32	0	32	17,460
Putnam	38	41	2	39	21,779
Rensselaer	258	266	2	264	110,586
Rockland	173	189	6	183	94,957
St. Lawrence	252	258	8	250	91,364
Saratoga	66	71	8	63	27,876
Schenectady	171	180	20	160	73,129
Schoharie	28	31	3	28	19,167
Schuyler	24	26	0	26	8,362
Seneca	35	36	3	33	11,168
Steuben	212	224	14	210	90,340
Suffolk	2,118	2,246	156	2,090	904,642
Sullivan	93	96	6	90	35,604
Tioga	49	50	2	48	23,583
Tompkins	140	151	13	138	72,653
Ulster	219	224	16	208	100,194
Warren	84	88	4	84	29,479
Washington	108	112	9	103	59,420
Wayne	138	143	11	132	48,548
Westchester	2,385	2,509	85	2,424	1,479,262
Wyoming	58	61	2	59	18,934
Yates	36	39	2	37	13,860

Note: A breakout of Safety Net Assistance - FNP - Cash and Safety Net Assistance - FNP - Non-Cash expenditures is not available for New York City.

Table 13  
SAFETY NET ASSISTANCE - FNP - CASH BY CASE SIZE CATEGORY  
Cases, Recipients, Children, Adults and Expenditures by Local District  
August 2001

Local District	One Person					Multi-Person				
	Cases	Recipients	Children	Adults	Expenditures	Cases	Recipients	Children	Adults	Expenditures
New York State	See Note	See Note	See Note	See Note	See Note	See Note	See Note	See Note	See Note	See Note
New York City	See Note	See Note	See Note	See Note	See Note	See Note	See Note	See Note	See Note	See Note
Rest of State	19,528	19,528	521	19,007	\$8,346,586	821	1,867	555	1,312	\$455,188
Albany	857	857	4	853	489,849	18	41	18	23	6,061
Allegany	90	90	1	89	27,546	10	21	4	17	4,641
Broome	359	359	19	340	144,640	23	57	23	34	12,433
Cattaraugus	154	154	2	152	61,343	10	23	7	16	4,298
Cayuga	58	58	1	57	23,625	2	4	1	3	272
Chautauqua	454	454	7	447	134,053	20	40	7	33	10,295
Chemung	150	150	8	142	51,303	7	14	6	8	2,947
Chenango	49	49	1	48	28,322	0	0	0	0	0
Clinton	166	166	4	162	70,001	9	23	1	22	5,150
Columbia	99	99	4	95	30,098	7	14	3	11	1,602
Cortland	87	87	4	83	46,673	6	15	0	15	2,527
Delaware	49	49	2	47	15,367	5	10	1	9	1,837
Dutchess	192	192	21	171	81,785	16	40	20	20	13,309
Erie	2,686	2,686	45	2,641	960,148	92	217	61	156	42,495
Essex	44	44	0	44	17,915	3	7	0	7	908
Franklin	54	54	0	54	18,533	1	2	1	1	71
Fulton	69	69	1	68	40,954	5	11	3	8	2,683
Genesee	75	75	3	72	29,980	2	4	2	2	467
Greene	100	100	2	98	38,812	5	12	3	9	2,335
Hamilton	5	5	0	5	1,417	0	0	0	0	0
Herkimer	61	61	4	57	20,154	2	6	3	3	594
Jefferson	218	218	6	212	86,800	7	15	0	15	3,640
Lewis	18	18	1	17	3,172	3	8	4	4	2,216
Livingston	135	135	5	130	52,105	9	18	3	15	3,400
Madison	30	30	4	26	10,842	1	3	2	1	589
Monroe	2,508	2,508	72	2,436	1,022,756	93	215	77	138	48,143
Montgomery	83	83	0	83	40,533	1	2	1	1	300
Nassau	971	971	17	954	458,932	37	76	13	63	19,079
Niagara	385	385	14	371	131,520	11	25	9	16	6,428
Oneida	433	433	20	413	136,507	32	70	7	63	13,876
Onondaga	1,630	1,630	55	1,575	573,066	69	156	60	96	45,604
Ontario	150	150	5	145	57,746	4	9	3	6	2,089
Orange	430	430	2	428	161,357	19	49	16	33	11,895
Orleans	102	102	0	102	39,532	7	15	4	11	2,733
Oswego	142	142	4	138	65,584	3	7	3	4	1,520
Otsego	32	32	0	32	17,460	0	0	0	0	0
Putnam	35	35	2	33	20,518	3	6	0	6	1,261
Rensselaer	250	250	0	250	107,871	8	16	2	14	2,715
Rockland	159	159	4	155	80,469	14	30	2	28	14,488
St. Lawrence	246	246	6	240	89,310	6	12	2	10	2,054
Saratoga	63	63	4	59	25,385	3	8	4	4	2,491
Schenectady	165	165	11	154	70,532	6	15	9	6	2,597
Schoharie	25	25	1	24	18,060	3	6	2	4	1,107
Schuyler	22	22	0	22	7,710	2	4	0	4	652
Seneca	34	34	2	32	11,168	1	2	1	1	0
Steuben	203	203	3	200	87,054	9	21	11	10	3,286
Suffolk	2,029	2,029	74	1,955	831,731	89	217	82	135	72,911
Sullivan	90	90	4	86	34,636	3	6	2	4	968
Tioga	48	48	2	46	23,350	1	2	0	2	233
Tompkins	132	132	6	126	68,531	8	19	7	12	4,122
Ulster	214	214	10	204	97,382	5	10	6	4	2,812
Warren	80	80	3	77	27,892	4	8	1	7	1,587
Washington	105	105	3	102	58,235	3	7	6	1	1,185
Wayne	135	135	5	130	47,273	3	8	6	2	1,275
Westchester	2,280	2,280	40	2,240	1,418,387	105	229	45	184	60,875
Wyoming	55	55	2	53	17,727	3	6	0	6	1,207
Yates	33	33	1	32	12,935	3	6	1	5	925

Note: A breakout of One-Person and Multi-Person cases is not available for New York City.

Table 14  
**SAFETY NET ASSISTANCE - FNP - NON-CASH TOTAL**  
Cases, Recipients, Children, Adults and Expenditures by Local District  
August 2001

Local District	Safety Net Assistance - FNP - Non-Cash Total				
	Cases	Recipients	Children	Adults	Expenditures
New York State	20,863	21,348	349	20,999	See Note
New York City	13,157	13,481	93	13,388	See Note
Rest of State	7,706	7,867	256	7,611	\$3,652,188
Albany	2	2	0	2	655
Allegany	10	10	0	10	1,735
Broome	157	161	2	159	81,225
Cattaraugus	17	17	1	16	3,530
Cayuga	24	26	4	22	11,816
Chautauqua	99	101	2	99	34,454
Chemung	33	34	2	32	16,958
Chenango	7	8	2	6	2,749
Clinton	35	35	1	34	17,165
Columbia	13	14	2	12	8,859
Cortland	18	18	1	17	12,627
Delaware	4	4	0	4	3,998
Dutchess	192	195	17	178	102,108
Erie	1,267	1,294	12	1,282	418,662
Essex	12	12	2	10	9,518
Franklin	16	16	1	15	6,256
Fulton	36	37	1	36	17,115
Genesee	25	27	4	23	12,928
Greene	16	17	4	13	7,636
Hamilton	0	0	0	0	0
Herkimer	14	14	0	14	11,583
Jefferson	102	103	3	100	56,273
Lewis	11	11	0	11	3,530
Livingston	45	45	0	45	23,127
Madison	6	6	0	6	5,509
Monroe	2,024	2,069	36	2,033	927,392
Montgomery	10	10	0	10	2,267
Nassau	305	319	38	281	181,752
Niagara	286	290	4	286	132,875
Oneida	148	150	4	146	83,728
Onondaga	256	262	25	237	116,819
Ontario	68	69	0	69	28,039
Orange	288	303	45	258	169,796
Orleans	9	9	1	8	2,071
Oswego	39	39	0	39	21,606
Otsego	10	10	0	10	7,788
Putnam	17	18	4	14	7,061
Rensselaer	75	76	0	76	46,700
Rockland	216	220	0	220	123,124
St.Lawrence	40	40	0	40	25,631
Saratoga	7	7	1	6	5,144
Schenectady	87	89	0	89	56,656
Schoharie	8	8	0	8	7,585
Schuyler	8	8	0	8	5,359
Seneca	18	18	1	17	8,907
Steuben	47	47	0	47	21,571
Suffolk	480	485	28	457	181,242
Sullivan	49	49	0	49	42,050
Tioga	5	5	1	4	2,516
Tompkins	85	86	2	84	45,988
Ulster	98	98	2	96	52,677
Warren	9	9	0	9	7,758
Washington	14	14	2	12	11,311
Wayne	42	42	0	42	20,019
Westchester	787	801	1	800	432,589
Wyoming	8	8	0	8	3,802
Yates	2	2	0	2	349

Note: A breakout of Safety Net Assistance - FNP - Cash and Safety Net Assistance - FNP - Non-Cash expenditures is not available for New York City.



Table 15  
SAFETY NET ASSISTANCE - FNP - NON-CASH BY CASE SIZE CATEGORY  
Cases, Recipients, Children, Adults and Expenditures by Local District  
August 2001

Local District	One Person					Multi-Person				
	Cases	Recipients	Children	Adults	Expenditures	Cases	Recipients	Children	Adults	Expenditures
New York State	See Note	See Note	See Note	See Note	See Note	See Note	See Note	See Note	See Note	See Note
New York City	See Note	See Note	See Note	See Note	See Note	See Note	See Note	See Note	See Note	See Note
Rest of State	7,576	7,576	137	7,439	\$3,581,675	130	291	119	172	\$70,513
Albany	2	2	0	2	655	0	0	0	0	0
Allegany	10	10	0	10	1,735	0	0	0	0	0
Broome	154	154	0	154	79,617	3	7	2	5	1,608
Cattaraugus	17	17	1	16	3,530	0	0	0	0	0
Cayuga	22	22	2	20	11,101	2	4	2	2	715
Chautauqua	97	97	0	97	33,107	2	4	2	2	1,347
Chemung	32	32	0	32	16,422	1	2	2	0	536
Chenango	6	6	0	6	2,494	1	2	2	0	255
Clinton	35	35	1	34	17,165	0	0	0	0	0
Columbia	12	12	0	12	8,503	1	2	2	0	356
Cortland	18	18	1	17	12,627	0	0	0	0	0
Delaware	4	4	0	4	3,998	0	0	0	0	0
Dutchess	189	189	14	175	100,769	3	6	3	3	1,339
Erie	1,243	1,243	3	1,240	410,451	24	51	9	42	8,211
Essex	12	12	2	10	9,518	0	0	0	0	0
Franklin	16	16	1	15	6,256	0	0	0	0	0
Fulton	35	35	0	35	16,552	1	2	1	1	563
Genesee	24	24	1	23	12,503	1	3	3	0	425
Greene	15	15	2	13	7,099	1	2	2	0	537
Hamilton	0	0	0	0	0	0	0	0	0	0
Herkimer	14	14	0	14	11,583	0	0	0	0	0
Jefferson	101	101	2	99	55,780	1	2	1	1	493
Lewis	11	11	0	11	3,530	0	0	0	0	0
Livingston	45	45	0	45	23,127	0	0	0	0	0
Madison	6	6	0	6	5,509	0	0	0	0	0
Monroe	1,993	1,993	5	1,988	909,846	31	76	31	45	17,546
Montgomery	10	10	0	10	2,267	0	0	0	0	0
Nassau	296	296	20	276	176,093	9	23	18	5	5,659
Niagara	283	283	1	282	131,376	3	7	3	4	1,499
Oneida	147	147	1	146	83,064	1	3	3	0	664
Onondaga	250	250	19	231	114,395	6	12	6	6	2,424
Ontario	67	67	0	67	28,005	1	2	0	2	34
Orange	277	277	28	249	163,467	11	26	17	9	6,329
Orleans	9	9	1	8	2,071	0	0	0	0	0
Oswego	39	39	0	39	21,606	0	0	0	0	0
Otsego	10	10	0	10	7,788	0	0	0	0	0
Putnam	16	16	3	13	6,769	1	2	1	1	292
Rensselaer	74	74	0	74	46,175	1	2	0	2	525
Rockland	212	212	0	212	120,911	4	8	0	8	2,213
St.Lawrence	40	40	0	40	25,631	0	0	0	0	0
Saratoga	7	7	1	6	5,144	0	0	0	0	0
Schenectady	85	85	0	85	55,719	2	4	0	4	937
Schoharie	8	8	0	8	7,585	0	0	0	0	0
Schuyler	8	8	0	8	5,359	0	0	0	0	0
Seneca	18	18	1	17	8,907	0	0	0	0	0
Steuben	47	47	0	47	21,571	0	0	0	0	0
Suffolk	475	475	20	455	177,442	5	10	8	2	3,800
Sullivan	49	49	0	49	42,050	0	0	0	0	0
Tioga	5	5	1	4	2,516	0	0	0	0	0
Tompkins	84	84	2	82	45,519	1	2	0	2	469
Ulster	98	98	2	96	52,677	0	0	0	0	0
Warren	9	9	0	9	7,758	0	0	0	0	0
Washington	14	14	2	12	11,311	0	0	0	0	0
Wayne	42	42	0	42	20,019	0	0	0	0	0
Westchester	774	774	0	774	420,852	13	27	1	26	11,737
Wyoming	8	8	0	8	3,802	0	0	0	0	0
Yates	2	2	0	2	349	0	0	0	0	0

Note: A breakout of One-Person and Multi-Person cases is not available for New York City.

Table 16  
**FOOD STAMPS**  
Households, Persons and Value of Food Stamps Benefits by Local District  
August 2001

Local District	Total			Temporary Assistance			Non-Temporary Assistance		
	Households	Persons	Food Stamps Benefits	Households	Persons	Food Stamps Benefits	Households	Persons	Food Stamps Benefits
New York State	661,169	1,308,803	\$115,489,482	468,244	842,454	\$81,142,852	192,925	466,349	\$34,346,630
New York City	422,869	817,893	78,118,489	344,706	637,551	63,679,126	78,163	180,342	14,439,363
Rest of State	238,300	490,910	37,370,993	123,538	204,903	17,463,726	114,762	286,007	19,907,267
Albany	8,404	17,102	1,342,768	4,860	8,488	751,428	3,544	8,614	591,340
Allegany	1,684	3,440	236,951	813	1,296	100,799	871	2,144	136,152
Broome	5,402	10,546	794,814	2,844	4,473	386,280	2,558	6,073	408,534
Cattaraugus	2,744	5,370	358,959	1,162	1,658	132,753	1,582	3,712	226,206
Cayuga	1,950	4,180	310,198	736	1,053	84,181	1,214	3,127	226,017
Chautauqua	5,129	10,827	826,049	2,669	4,463	402,390	2,460	6,364	423,659
Chemung	2,594	5,392	387,472	1,295	2,017	167,104	1,299	3,375	220,368
Chenango	1,583	3,372	236,046	487	656	55,239	1,096	2,716	180,807
Clinton	2,812	5,334	389,119	1,295	1,643	131,661	1,517	3,691	257,458
Columbia	1,330	2,427	183,511	607	857	74,528	723	1,570	108,983
Cortland	1,384	2,831	218,535	630	957	83,085	754	1,874	135,450
Delaware	1,200	2,162	144,154	485	604	45,166	715	1,558	98,988
Dutchess	3,373	6,027	454,985	1,549	2,309	203,309	1,824	3,718	251,676
Erie	35,432	72,204	5,635,351	18,929	32,092	2,870,691	16,503	40,112	2,764,660
Essex	1,068	1,917	123,357	473	615	41,914	595	1,302	81,443
Franklin	1,511	3,015	207,039	638	817	61,080	873	2,198	145,959
Fulton	1,736	3,653	271,587	717	930	76,298	1,019	2,723	195,289
Genesee	1,130	2,301	160,946	475	670	56,146	655	1,631	104,800
Greene	1,264	2,481	186,558	609	960	85,333	655	1,521	101,225
Hamilton	149	212	10,823	27	35	2,507	122	177	8,316
Herkimer	1,782	3,681	266,353	630	846	63,593	1,152	2,835	202,760
Jefferson	3,368	7,363	528,591	1,516	2,316	184,101	1,852	5,047	344,490
Lewis	781	1,661	114,739	256	336	24,422	525	1,325	90,317
Livingston	1,532	2,941	215,984	691	1,092	96,941	841	1,849	119,043
Madison	1,416	2,843	213,424	535	635	48,324	881	2,208	165,100
Monroe	25,725	55,568	4,273,820	15,108	28,635	2,444,374	10,617	26,933	1,829,446
Montgomery	1,785	3,989	312,612	618	829	70,254	1,167	3,160	242,358
Nassau	9,627	16,938	1,339,990	5,992	9,256	789,192	3,635	7,682	550,798
Niagara	5,968	11,997	910,509	3,308	5,595	469,535	2,660	6,402	440,974
Oneida	8,974	18,974	1,421,221	3,924	6,254	525,772	5,050	12,720	895,449
Onondaga	12,892	28,644	2,255,941	6,828	12,512	1,099,696	6,064	16,132	1,156,245
Ontario	2,107	3,856	273,252	949	1,363	114,829	1,158	2,493	158,423
Orange	7,284	18,510	1,489,855	3,205	6,619	585,391	4,079	11,891	904,464
Orleans	1,218	2,700	202,102	567	978	85,645	651	1,722	116,457
Oswego	3,310	7,739	571,206	1,288	1,917	156,516	2,022	5,822	414,690
Otsego	1,154	2,067	142,552	431	483	36,382	723	1,584	106,170
Putnam	484	665	41,378	273	337	22,598	211	328	18,780
Rensselaer	3,708	7,567	614,092	1,814	3,002	276,865	1,894	4,565	337,227
Rockland	4,683	14,913	1,151,036	1,838	3,505	234,580	2,845	11,408	916,456
St. Lawrence	3,307	6,761	483,105	1,560	2,319	191,665	1,747	4,442	291,440
Saratoga	2,557	4,851	345,284	881	962	73,026	1,676	3,889	272,258
Schenectady	3,931	8,395	621,927	1,674	2,521	206,832	2,257	5,874	415,095
Schoharie	736	1,416	99,102	273	308	22,035	463	1,108	77,067
Schuyler	403	800	54,950	187	276	22,420	216	524	32,530
Seneca	819	1,523	104,329	306	418	32,410	513	1,105	71,919
Steuben	2,620	5,555	399,230	1,248	1,954	162,766	1,372	3,601	236,464
Suffolk	14,056	25,319	1,949,223	8,885	14,120	1,168,703	5,171	11,199	780,520
Sullivan	2,029	4,006	274,630	952	1,377	107,891	1,077	2,629	166,739
Tioga	976	2,109	155,367	434	657	54,769	542	1,452	100,598
Tompkins	1,772	3,396	237,840	943	1,436	110,418	829	1,960	127,422
Ulster	3,464	6,270	453,160	1,867	2,831	225,023	1,597	3,439	228,137
Warren	1,448	2,666	196,010	700	969	78,940	748	1,697	117,070
Washington	1,460	2,839	200,964	646	839	67,556	814	2,000	133,408
Wayne	2,167	3,849	272,660	938	1,210	99,479	1,229	2,639	173,181
Westchester	15,457	31,083	2,519,140	10,417	18,883	1,637,842	5,040	12,200	881,298
Wyoming	743	1,468	104,343	320	443	37,478	423	1,025	66,865
Yates	678	1,195	81,850	236	277	23,571	442	918	58,279

Note: Food Stamps households containing only SSI recipients are counted as TA in accordance with Federal reporting requirements.

Note: Rest of State data does not include the following FAP data: 55 households, 65 persons, and \$6,093 in expenditures.

Table 17  
**SUPPLEMENTAL SECURITY INCOME**  
 Recipients, Total Program Expenditures, Federal and State Shares, by Local District  
 August 2001

Local District	Expenditures			
	Recipients	Total	Federal	State
New York State*	634,506	\$284,244,477	\$236,476,814	\$47,767,663
New York City	400,852	187,617,978	159,705,491	27,912,487
Rest of State	223,150	93,093,467	74,480,505	18,612,962
Albany	6,382	2,648,131	2,108,489	539,642
Allegany	1,499	613,990	493,860	120,130
Broome	5,175	2,204,318	1,810,049	394,269
Cattaraugus	2,407	976,458	797,795	178,663
Cayuga	1,790	732,156	569,526	162,630
Chautauqua	4,026	1,651,296	1,341,673	309,623
Chemung	2,826	1,133,220	930,241	202,979
Chenango	1,355	551,437	465,589	85,848
Clinton	2,538	1,029,892	844,136	185,756
Columbia	1,534	594,466	450,685	143,781
Cortland	1,233	489,523	393,821	95,702
Delaware	1,217	440,992	350,557	90,435
Dutchess	4,446	1,830,186	1,381,926	448,260
Erie	25,566	11,098,203	9,068,112	2,030,091
Essex	974	381,595	282,888	98,707
Franklin	1,623	664,035	526,149	137,886
Fulton	1,698	653,497	514,447	139,050
Genesee	1,006	383,783	304,217	79,566
Greene	1,110	419,806	332,825	86,981
Hamilton	79	25,386	20,928	4,458
Herkimer	1,590	608,374	487,410	120,964
Jefferson	2,914	1,223,801	997,843	225,958
Lewis	650	255,379	208,309	47,070
Livingston	942	402,540	334,108	68,432
Madison	1,245	477,326	370,173	107,153
Monroe	17,843	7,934,243	6,478,046	1,456,197
Montgomery	1,331	500,288	402,564	97,724
Nassau	17,012	6,939,288	5,392,378	1,546,910
Niagara	4,905	2,046,970	1,638,645	408,325
Oneida	7,222	3,047,376	2,508,785	538,591
Onondaga	11,493	4,928,455	4,119,700	808,755
Ontario	1,581	647,056	515,801	131,255
Orange	6,088	2,487,651	2,017,365	470,286
Orleans	922	422,795	354,614	68,181
Oswego	2,931	1,187,077	994,292	192,785
Otsego	1,337	508,648	385,639	123,009
Putnam	763	305,937	220,616	85,321
Rensselaer	3,211	1,308,585	1,032,657	275,928
Rockland	4,487	1,894,109	1,363,159	530,950
St.Lawrence	3,691	1,520,976	1,264,068	256,908
Saratoga	2,555	973,145	770,877	202,268
Schenectady	3,793	1,593,475	1,292,382	301,093
Schoharie	729	272,375	199,452	72,923
Schuyler	503	195,813	155,260	40,553
Seneca	702	275,492	219,749	55,743
Steuben	2,973	1,225,427	1,017,898	207,529
Suffolk	21,313	9,094,579	6,955,425	2,139,154
Sullivan	2,572	1,084,618	795,733	288,885
Tioga	1,006	401,349	341,501	59,848
Tompkins	1,528	654,224	514,640	139,584
Ulster	4,039	1,641,584	1,309,014	332,570
Warren	1,464	532,858	427,277	105,581
Washington	1,484	581,950	471,221	110,729
Wayne	1,795	674,090	537,774	136,316
Westchester	14,945	6,281,120	5,050,630	1,230,490
Wyoming	626	264,748	210,792	53,956
Yates	481	177,376	136,795	40,581
Mental Hygiene	10,504	3,533,032	2,290,818	1,242,214

\* Only NYS includes Mental Hygiene

Table 18  
**SUPPLEMENTAL SECURITY INCOME**  
 SSI Recipients by Living Arrangement and Location  
 August 2001

Living Arrangement	New York State	New York City	Rest of State	Mental Hygiene
Living Alone	329,286	224,827	104,405	54
Living With Others	213,261	133,829	79,402	30
Living in Household of Another	25,204	15,859	9,342	3
Congregate Care Level I	5,918	609	509	4,800
Congregate Care Level II	36,897	14,320	22,062	515
Congregate Care Level III	202	56	146	0
Title XIX Institution	23,738	11,352	7,284	5,102
Total	634,506	400,852	223,150	10,504

Table 19  
**SUPPLEMENTAL SECURITY INCOME**  
 SSI Recipients by Living Arrangement and Category of Assistance  
 August 2001

Living Arrangement	Total	Category of Assistance		
		Aged	Blind	Disabled
Living Alone	329,286	102,574	1,749	224,963
Living With Others	213,261	17,725	1,143	194,393
Living in Household of Another	25,204	10,277	166	14,761
Congregate Care Level I	5,918	322	28	5,568
Congregate Care Level II	36,897	5,323	189	31,385
Congregate Care Level III	202	0	0	202
Title XIX Institution	23,738	4,725	133	18,880
Total	634,506	140,946	3,408	490,152

Table 20  
CHILD SUPPORT COLLECTIONS (IV-D)  
August 2001

Local District	Total	Current Assistance	Former Assistance	Never Assistance
New York State	\$119,475,087	\$12,114,322	\$44,638,835	\$62,721,930
New York City	44,554,614	7,659,413	17,746,254	19,148,947
Rest of State	74,920,473	4,454,909	26,892,581	43,572,983
Albany	2,193,482	104,629	630,401	1,458,452
Allegany	456,131	40,027	243,406	172,698
Broome	1,452,233	63,583	587,582	801,068
Cattaraugus	808,208	61,629	399,554	347,025
Cayuga	733,345	22,405	273,197	437,743
Chautauqua	1,256,732	100,615	711,576	444,541
Chemung	904,328	45,675	355,665	502,988
Chenango	505,755	28,899	171,921	304,935
Clinton	679,730	29,437	298,465	351,828
Columbia	435,825	14,481	162,798	258,546
Cortland	440,081	18,397	159,800	261,884
Delaware	420,537	13,449	155,618	251,470
Dutchess	2,126,327	84,297	606,922	1,435,108
Erie	5,291,968	438,084	2,666,514	2,187,370
Essex	344,669	14,728	198,956	130,985
Franklin	508,616	14,940	227,342	266,334
Fulton	535,402	16,269	217,602	301,531
Genesee	460,227	18,416	162,836	278,975
Greene	434,094	22,397	166,480	245,217
Hamilton	39,423	461	17,421	21,541
Herkimer	592,097	23,926	260,467	307,704
Jefferson	1,097,939	71,709	404,579	621,651
Lewis	245,933	6,810	86,395	152,728
Livingston	601,077	27,213	204,824	369,040
Madison	505,894	16,227	197,595	292,072
Monroe	5,138,738	536,907	2,230,937	2,370,894
Montgomery	430,603	17,534	176,591	236,478
Nassau	6,351,565	285,673	1,469,117	4,596,775
Niagara	1,669,518	130,199	869,196	670,123
Oneida	1,314,336	92,485	615,091	606,760
Onondaga	3,543,398	210,502	1,572,624	1,760,272
Ontario	920,697	38,888	301,308	580,501
Orange	2,546,676	162,986	718,398	1,665,292
Orleans	332,135	16,387	170,247	145,501
Oswego	1,159,833	41,534	575,487	542,812
Otsego	455,962	8,935	128,926	318,101
Putnam	566,956	3,253	107,279	456,424
Rensselaer	1,345,730	57,824	467,567	820,339
Rockland	1,657,377	69,857	444,171	1,143,349
St.Lawrence	927,372	43,562	475,684	408,126
Saratoga	1,429,028	19,490	281,958	1,127,580
Schenectady	1,236,072	50,322	350,729	835,021
Schoharie	296,581	12,184	111,495	172,902
Schuyler	136,624	5,780	41,856	88,988
Seneca	313,398	9,607	96,424	207,367
Steuben	809,105	47,432	387,113	374,560
Suffolk	9,359,907	578,932	2,553,986	6,226,989
Sullivan	531,994	39,837	193,914	298,243
Tioga	406,434	23,232	174,222	208,980
Tompkins	566,039	24,225	237,258	304,556
Ulster	1,279,723	59,877	393,275	826,571
Warren	697,359	20,123	225,626	451,610
Washington	612,570	24,422	194,378	393,770
Wayne	848,545	21,528	252,430	574,587
Westchester	4,439,898	483,342	1,299,905	2,656,651
Wyoming	327,696	14,794	125,910	186,992
Yates	198,551	4,553	81,563	112,435

Note: Effective February 1999, collection amounts include collections made on behalf of other states.