



NEW YORK STATE
OFFICE OF TEMPORARY AND DISABILITY ASSISTANCE
40 North Pearl Street, Albany, New York 12243-0001

George E. Pataki
Governor

Brian J. Wing
Commissioner

Temporary and Disability Assistance Statistics March 2002

Temporary Assistance

Temporary Assistance recipients totaled 638,253 in March 2002, decreasing 1,878 (-2.9%) from the previous month. Related expenditures for totaled \$145,994,543 in March 2002, increasing \$6.5 million (+4.6%) over February 2002.

For State Fiscal Year 2001-02, Temporary Assistance recipients averaged 668,085 monthly, decreasing 97,353 (-12.7%) from the previous year's monthly average. State Fiscal Year Temporary Assistance expenditures totaled \$1.7 billion in 2001-02, decreasing \$160.3 million (-8.4%) from SFY 2000-01.

Food Stamps

Recipients of Food Stamps numbered 1,346,311 in March 2002, increasing 14,157 (+1.1%) over February 2002. Food Stamps expenditures totaled \$125,359,007 in March 2002, increasing \$1.8 million (+1.4%) over the previous month.

The monthly average number of Food Stamps recipients was 1,319,427 in State Fiscal Year 2001-02, decreasing 35,705 (-2.6%) from the previous year's average. Total Food Stamps expenditures totaled \$1.4 billion in SFY 2001-02, decreasing \$91.9 million (-6.8%) from the previous fiscal year.

Supplemental Security Income

For March 2002, SSI recipients (including Mental Hygiene) totaled 628,409, decreasing 974 (-0.2%) from the previous month. SSI expenditures in March totaled \$292,096,236, decreasing \$1.2 million (-0.4%) from February 2002.

For State Fiscal Year 2001-02, the monthly average of SSI recipients (including Mental Hygiene) was 626,765, increasing 9,142 (+1.5%) over the previous year. SSI expenditures totaled \$3.4 billion in SFY 2001-02, increasing \$151.2 million (+4.6%) over SFY 2000-01.

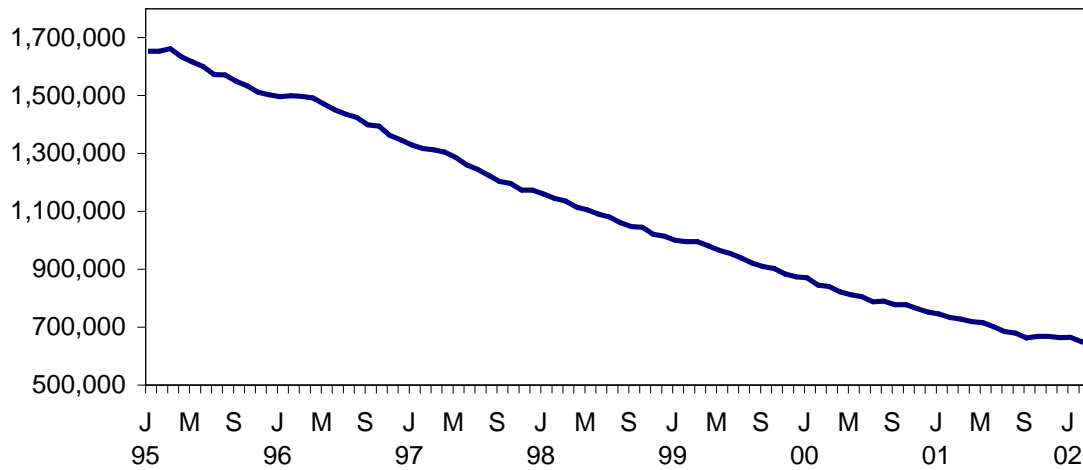
Table of Contents

Page Number

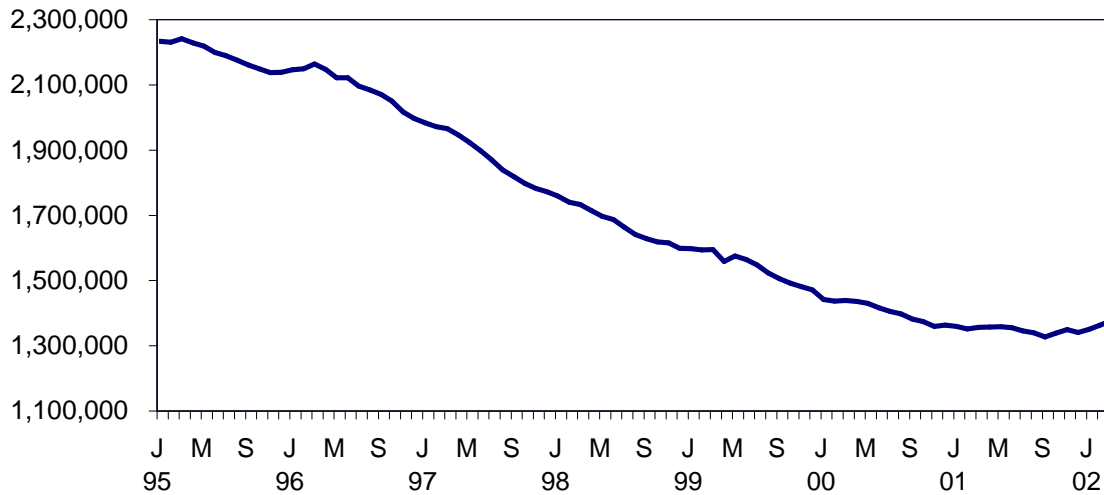
Graphs.....	3
Summary Tables.....	4
Temporary Assistance by Program Area.....	5
Temporary Assistance by Funding Source.....	9
Other Programs.....	17

NEW YORK STATE JANUARY 1995 - MARCH 2002

TEMPORARY ASSISTANCE RECIPIENTS

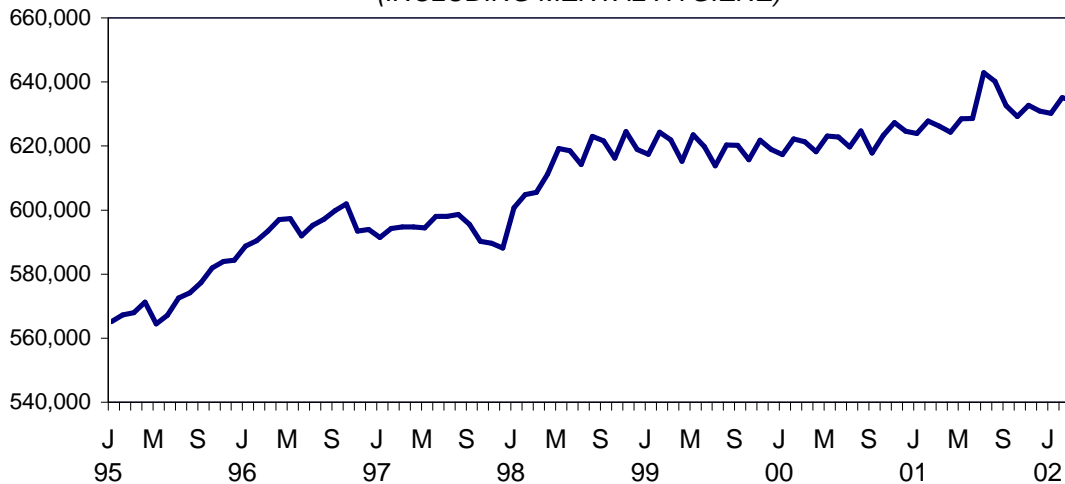


FOOD STAMPS PERSONS



SSI PERSONS

(INCLUDING MENTAL HYGIENE)



SELECTED SUMMARY PROGRAM DATA
BY REGION

Table 1
TEMPORARY AND DISABILITY ASSISTANCE CASES
March 2002

Region	Cases				
	Temporary Assistance by Program			Supplemental Security Income	Food Stamps
	Total	Family Assistance	Safety Net Assistance		
New York State	306,460	155,637	150,823	618,381	680,314
New York City	214,863	102,625	112,238	399,585	424,927
Rest of State	91,597	53,012	38,585	218,796	255,387

Table 2
TEMPORARY AND DISABILITY ASSISTANCE RECIPIENTS
March 2002

Region	Recipients				
	Temporary Assistance by Program			Supplemental Security Income	Food Stamps
	Total	Family Assistance	Safety Net Assistance		
New York State	638,253	374,266	263,987	618,381	1,346,311
New York City	446,266	242,472	203,794	399,585	814,790
Rest of State	191,987	131,794	60,193	218,796	531,521

Table 3
TEMPORARY AND DISABILITY ASSISTANCE EXPENDITURES
March 2002

Region	Expenditures				
	Temporary Assistance by Program			Supplemental Security Income	Food Stamps
	Total	Family Assistance	Safety Net Assistance		
New York State	\$145,994,543	\$82,714,393	\$63,280,150	\$288,551,641	\$125,359,007
New York City	95,013,000	51,685,000	43,328,000	192,669,711	82,375,222
Rest of State	50,981,543	31,029,393	19,952,150	95,881,930	42,983,785

Note: SSI data listed here do not include Mental Hygiene data. See Tables 17 - 19 for total SSI data.

Table 4
 TEMPORARY ASSISTANCE
 Year to Year Monthly Comparison by Local District
 Cases, Recipients and Expenditures
 March 2002

Local District	March 2002			March 2001			March 2000		
	Cases	Recipients	Expenditures	Cases	Recipients	Expenditures	Cases	Recipients	Expenditures
New York State	306,460	638,253	\$145,994,543	337,512	719,318	\$156,740,262	383,997	831,458	\$ 178,029,556
New York City*	214,863	446,266	95,013,000	245,104	518,264	105,326,000	277,406	595,538	118,441,000
Rest of State	91,597	191,987	50,981,543	92,408	201,054	51,414,262	106,591	235,920	59,588,556
Albany	3,477	7,309	1,883,059	3,184	7,148	1,684,687	3,480	7,845	2,069,538
Allegany	479	1,078	192,539	513	1,157	198,001	589	1,343	220,614
Broome	2,088	4,398	995,513	1,952	4,242	832,231	2,388	5,411	1,150,741
Cattaraugus	643	1,348	248,016	629	1,311	263,296	709	1,508	295,717
Cayuga	402	849	183,923	426	923	191,751	464	1,031	199,551
Chautauqua	2,306	4,903	1,005,358	2,059	4,348	970,107	2,213	4,860	950,699
Chemung	973	2,167	418,942	824	1,841	347,188	984	2,280	396,192
Chenango	236	495	109,414	233	509	105,484	264	569	107,858
Clinton	658	1,189	326,785	569	1,074	257,146	598	1,144	256,535
Columbia	406	731	194,304	382	696	164,769	407	804	203,790
Cortland	472	962	221,249	394	844	178,575	445	1,006	230,182
Delaware	161	282	62,562	183	340	73,387	211	419	103,202
Dutchess	1,350	2,424	762,816	1,377	2,656	763,407	1,541	3,130	789,956
Erie	12,756	27,374	5,649,486	14,431	32,250	6,418,667	17,481	39,152	7,400,581
Essex	213	420	104,960	214	428	103,402	259	510	119,188
Franklin	321	626	131,148	322	658	126,796	380	717	155,658
Fulton	413	781	177,911	378	682	184,850	461	980	185,024
Genesee	291	587	128,563	299	635	137,858	307	666	137,191
Greene	417	804	173,300	408	803	187,719	430	882	208,948
Hamilton	14	19	3,868	16	25	6,133	16	24	5,996
Herkimer	351	722	146,558	304	621	122,258	396	861	159,458
Jefferson	1,006	2,122	457,628	1,095	2,204	512,856	1,316	2,749	639,858
Lewis	127	246	49,637	121	250	59,796	162	331	61,853
Livingston	612	1,144	293,680	547	1,039	261,154	510	1,038	268,031
Madison	161	280	65,641	191	331	79,869	190	358	79,002
Monroe	13,932	30,748	7,813,099	14,335	32,538	7,728,532	16,842	38,894	9,564,096
Montgomery	336	747	178,446	291	603	137,167	310	645	143,241
Nassau	4,252	8,386	2,619,837	4,574	9,199	2,806,116	5,232	10,684	2,790,003
Niagara	2,492	5,282	1,046,555	2,506	5,213	1,044,400	2,895	6,003	1,179,551
Oneida	2,258	5,331	1,006,439	2,316	5,751	1,135,931	2,736	6,844	1,293,138
Onondaga	6,230	13,238	2,778,880	5,778	12,885	2,579,997	6,110	14,050	2,746,298
Ontario	665	1,223	303,402	547	1,021	246,344	552	1,059	236,396
Orange	2,716	6,196	1,637,377	2,901	7,691	1,900,614	3,301	8,242	2,692,097
Orleans	531	1,105	245,692	478	1,076	214,368	481	1,080	221,634
Oswego	805	1,677	376,409	774	1,730	357,108	875	2,042	427,442
Otsego	132	223	62,633	113	187	52,199	129	225	66,392
Putnam	122	196	76,954	109	200	76,827	137	214	101,307
Rensselaer	1,302	2,790	588,775	1,138	2,448	564,676	1,273	2,798	566,150
Rockland	1,161	3,086	696,498	1,157	3,400	678,266	1,355	3,832	839,912
St. Lawrence	1,061	2,038	452,895	1,060	2,169	429,939	1,269	2,632	474,956
Saratoga	277	424	135,751	235	360	117,912	267	431	128,122
Schenectady	1,102	2,201	587,495	1,037	2,288	498,748	1,133	2,598	512,090
Schoharie	85	151	47,241	89	151	36,582	114	196	58,887
Schuyler	141	326	65,749	122	233	47,052	113	239	47,892
Seneca	171	339	73,323	191	368	86,466	187	392	88,356
Steuben	931	1,768	412,244	762	1,525	318,445	1,103	2,309	474,545
Suffolk	7,215	14,456	5,866,531	7,365	14,674	6,002,506	8,002	16,945	6,430,974
Sullivan	629	1,282	340,581	551	1,118	261,930	601	1,291	303,356
Tioga	339	681	155,162	281	573	113,658	343	739	144,907
Tompkins	687	1,305	361,742	700	1,321	411,027	737	1,397	352,165
Ulster	1,258	2,517	669,829	1,171	2,381	615,921	1,383	2,637	678,837
Warren	290	538	126,824	252	488	112,954	269	493	127,365
Washington	362	605	183,783	338	631	203,482	367	743	174,343
Wayne	552	991	266,851	477	890	215,182	580	1,216	253,556
Westchester	8,941	18,410	7,706,603	9,432	20,427	8,094,169	11,401	24,817	9,946,356
Wyoming	180	292	68,416	192	349	64,127	193	394	79,401
Yates	109	175	42,667	85	151	30,230	100	221	49,428

* Expenditures partially estimated.

Table 5
TEMPORARY ASSISTANCE
Cases, Recipients, Children, Adults and Expenditures by Local District
March 2002

Local District	Temporary Assistance				
	Cases	Recipients	Children	Adults	Expenditures
New York State	306,460	638,253	372,588	265,665	\$145,994,543
New York City*	214,863	446,266	256,425	189,841	95,013,000
Rest of State	91,597	191,987	116,163	75,824	50,981,543
Albany	3,477	7,309	4,283	3,026	1,883,059
Allegany	479	1,078	648	430	192,539
Broome	2,088	4,398	2,665	1,733	995,513
Cattaraugus	643	1,348	815	533	248,016
Cayuga	402	849	552	297	183,923
Chautauqua	2,306	4,903	2,851	2,052	1,005,358
Chemung	973	2,167	1,368	799	418,942
Chenango	236	495	313	182	109,414
Clinton	658	1,189	657	532	326,785
Columbia	406	731	418	313	194,304
Cortland	472	962	527	435	221,249
Delaware	161	282	187	95	62,562
Dutchess	1,350	2,424	1,473	951	762,816
Erie	12,756	27,374	16,590	10,784	5,649,486
Essex	213	420	234	186	104,960
Franklin	321	626	367	259	131,148
Fulton	413	781	432	349	177,911
Genesee	291	587	352	235	128,563
Greene	417	804	440	364	173,300
Hamilton	14	19	6	13	3,868
Herkimer	351	722	453	269	146,558
Jefferson	1,006	2,122	1,194	928	457,628
Lewis	127	246	152	94	49,637
Livingston	612	1,144	556	588	293,680
Madison	161	280	206	74	65,641
Monroe	13,932	30,748	19,057	11,691	7,813,099
Montgomery	336	747	447	300	178,446
Nassau	4,252	8,386	5,332	3,054	2,619,837
Niagara	2,492	5,282	3,124	2,158	1,046,555
Oneida	2,258	5,331	3,411	1,920	1,006,439
Onondaga	6,230	13,238	8,136	5,102	2,778,880
Ontario	665	1,223	661	562	303,402
Orange	2,716	6,196	4,019	2,177	1,637,377
Orleans	531	1,105	615	490	245,692
Oswego	805	1,677	1,064	613	376,409
Otsego	132	223	137	86	62,633
Putnam	122	196	100	96	76,954
Rensselaer	1,302	2,790	1,674	1,116	588,775
Rockland	1,161	3,086	2,055	1,031	696,498
St. Lawrence	1,061	2,038	1,124	914	452,895
Saratoga	277	424	302	122	135,751
Schenectady	1,102	2,201	1,451	750	587,495
Schoharie	85	151	100	51	47,241
Schuyler	141	326	194	132	65,749
Seneca	171	339	200	139	73,323
Steuben	931	1,768	955	813	412,244
Suffolk	7,215	14,456	8,608	5,848	5,866,531
Sullivan	629	1,282	809	473	340,581
Tioga	339	681	421	260	155,162
Tompkins	687	1,305	711	594	361,742
Ulster	1,258	2,517	1,599	918	669,829
Warren	290	538	286	252	126,824
Washington	362	605	341	264	183,783
Wayne	552	991	577	414	266,851
Westchester	8,941	18,410	10,670	7,740	7,706,603
Wyoming	180	292	155	137	68,416
Yates	109	175	89	86	42,667

* Expenditures partially estimated.

Table 6
FAMILY ASSISTANCE
Cases, Recipients, Children, Adults and Expenditures by Local District
March 2002

Local District	Family Assistance				
	Cases	Recipients	Children	Adults	Expenditures
New York State	155,637	374,266	268,693	105,573	\$82,714,393
New York City*	102,625	242,472	173,707	68,765	51,685,000
Rest of State	53,012	131,794	94,986	36,808	31,029,393
Albany	2,130	5,440	3,783	1,657	1,148,447
Allegany	325	835	569	266	137,687
Broome	1,296	3,269	2,339	930	624,650
Cattaraugus	411	1,035	739	296	176,507
Cayuga	303	707	512	195	137,278
Chautauqua	1,444	3,683	2,489	1,194	690,896
Chemung	699	1,780	1,256	524	302,998
Chenango	175	424	302	122	80,010
Clinton	394	882	609	273	187,929
Columbia	255	563	402	161	113,322
Cortland	285	734	486	248	138,761
Delaware	107	226	183	43	39,702
Dutchess	765	1,715	1,315	400	491,487
Erie	7,083	17,891	12,917	4,974	3,328,470
Essex	139	327	215	112	69,674
Franklin	217	476	325	151	93,540
Fulton	267	623	428	195	110,514
Genesee	172	448	325	123	75,192
Greene	269	632	415	217	118,861
Hamilton	5	9	6	3	1,647
Herkimer	259	616	435	181	110,955
Jefferson	578	1,502	1,022	480	280,184
Lewis	83	189	138	51	34,840
Livingston	349	816	497	319	165,516
Madison	123	241	201	40	52,235
Monroe	7,182	18,642	13,711	4,931	4,320,318
Montgomery	215	612	434	178	133,049
Nassau	2,537	5,805	4,471	1,334	1,697,581
Niagara	1,478	3,605	2,477	1,128	611,533
Oneida	1,441	4,003	2,917	1,086	662,481
Onondaga	3,874	9,950	7,157	2,793	1,828,980
Ontario	364	849	592	257	160,062
Orange	1,734	4,410	3,253	1,157	1,072,061
Orleans	314	796	527	269	155,870
Oswego	580	1,390	1,003	387	268,091
Otsego	77	158	127	31	29,593
Putnam	57	125	89	36	32,448
Rensselaer	907	2,253	1,541	712	413,390
Rockland	598	1,713	1,341	372	361,761
St. Lawrence	660	1,503	985	518	287,229
Saratoga	173	301	273	28	82,059
Schenectady	719	1,659	1,277	382	379,481
Schoharie	56	121	98	23	24,866
Schuyler	100	277	189	88	46,007
Seneca	104	241	166	75	45,984
Steuben	524	1,254	853	401	234,550
Suffolk	3,667	9,277	6,978	2,299	3,720,957
Sullivan	434	1,048	770	278	240,521
Tioga	246	560	395	165	113,198
Tompkins	385	937	643	294	202,315
Ulster	869	2,001	1,468	533	486,331
Warren	169	397	269	128	81,291
Washington	214	433	307	126	102,513
Wayne	317	735	546	189	158,227
Westchester	4,723	11,345	7,989	3,356	4,298,852
Wyoming	103	209	146	63	43,455
Yates	58	122	86	36	23,037

* Expenditures partially estimated.

Table 7
SAFETY NET ASSISTANCE
Cases, Recipients, Children, Adults and Expenditures by Local District
March 2002

Local District	Safety Net Assistance				
	Cases	Recipients	Children	Adults	Expenditures
New York State	150,823	263,987	103,895	160,092	\$63,280,150
New York City*	112,238	203,794	82,718	121,076	43,328,000
Rest of State	38,585	60,193	21,177	39,016	19,952,150
Albany	1,347	1,869	500	1,369	734,612
Allegany	154	243	79	164	54,852
Broome	792	1,129	326	803	370,863
Cattaraugus	232	313	76	237	71,509
Cayuga	99	142	40	102	46,645
Chautauqua	862	1,220	362	858	314,462
Chemung	274	387	112	275	115,944
Chenango	61	71	11	60	29,404
Clinton	264	307	48	259	138,856
Columbia	151	168	16	152	80,982
Cortland	187	228	41	187	82,488
Delaware	54	56	4	52	22,860
Dutchess	585	709	158	551	271,329
Erie	5,673	9,483	3,673	5,810	2,321,016
Essex	74	93	19	74	35,286
Franklin	104	150	42	108	37,608
Fulton	146	158	4	154	67,397
Genesee	119	139	27	112	53,371
Greene	148	172	25	147	54,439
Hamilton	9	10	0	10	2,221
Herkimer	92	106	18	88	35,603
Jefferson	428	620	172	448	177,444
Lewis	44	57	14	43	14,797
Livingston	263	328	59	269	128,164
Madison	38	39	5	34	13,406
Monroe	6,750	12,106	5,346	6,760	3,492,781
Montgomery	121	135	13	122	45,397
Nassau	1,715	2,581	861	1,720	922,256
Niagara	1,014	1,677	647	1,030	435,022
Oneida	817	1,328	494	834	343,958
Onondaga	2,356	3,288	979	2,309	949,900
Ontario	301	374	69	305	143,340
Orange	982	1,786	766	1,020	565,316
Orleans	217	309	88	221	89,822
Oswego	225	287	61	226	108,318
Otsego	55	65	10	55	33,040
Putnam	65	71	11	60	44,506
Rensselaer	395	537	133	404	175,385
Rockland	563	1,373	714	659	334,737
St. Lawrence	401	535	139	396	165,666
Saratoga	104	123	29	94	53,692
Schenectady	383	542	174	368	208,014
Schoharie	29	30	2	28	22,375
Schuyler	41	49	5	44	19,742
Seneca	67	98	34	64	27,339
Steuben	407	514	102	412	177,694
Suffolk	3,548	5,179	1,630	3,549	2,145,574
Sullivan	195	234	39	195	100,060
Tioga	93	121	26	95	41,964
Tompkins	302	368	68	300	159,427
Ulster	389	516	131	385	183,498
Warren	121	141	17	124	45,533
Washington	148	172	34	138	81,270
Wayne	235	256	31	225	108,624
Westchester	4,218	7,065	2,681	4,384	3,407,751
Wyoming	77	83	9	74	24,961
Yates	51	53	3	50	19,630

* Expenditures partially estimated.

Table 8
 TEMPORARY ASSISTANCE BY FUNDING SOURCE
 Cases, Recipients and Expenditures by Local District
 March 2002

Local District	Total			Federally Participating - TANF Family Assistance and Safety Net - FP			Federally Non-Participating Safety Net Assistance - FNP		
	Cases	Recipients	Expenditures	Cases	Recipients	Expenditures	Cases	Recipients	Expenditures
New York State	306,460	638,253	\$145,994,543	157,268	378,531	\$83,836,054	149,192	259,722	\$62,158,489
New York City*	214,863	446,266	95,013,000	102,765	242,790	51,725,000	112,098	203,476	43,288,000
Rest of State	91,597	191,987	50,981,543	54,503	135,741	32,111,054	37,094	56,246	18,870,489
Albany	3,477	7,309	1,883,059	2,156	5,511	1,161,873	1,321	1,798	721,186
Allegany	479	1,078	192,539	326	839	138,422	153	239	54,117
Broome	2,088	4,398	995,513	1,326	3,341	636,833	762	1,057	358,680
Cattaraugus	643	1,348	248,016	425	1,077	180,885	218	271	67,131
Cayuga	402	849	183,923	309	723	140,049	93	126	43,874
Chautauqua	2,306	4,903	1,005,358	1,479	3,769	709,724	827	1,134	295,634
Chemung	973	2,167	418,942	705	1,798	307,603	268	369	111,339
Chenango	236	495	109,414	175	424	80,010	61	71	29,404
Clinton	658	1,189	326,785	404	906	198,162	254	283	128,623
Columbia	406	731	194,304	256	566	113,813	150	165	80,491
Cortland	472	962	221,249	295	756	143,447	177	206	77,802
Delaware	161	282	62,562	108	227	40,530	53	55	22,032
Dutchess	1,350	2,424	762,816	789	1,761	517,362	561	663	245,454
Erie	12,756	27,374	5,649,486	7,382	18,695	3,474,200	5,374	8,679	2,175,286
Essex	213	420	104,960	143	339	70,681	70	81	34,279
Franklin	321	626	131,148	218	477	95,326	103	149	35,822
Fulton	413	781	177,911	268	626	110,524	145	155	67,387
Genesee	291	587	128,563	176	459	77,831	115	128	50,732
Greene	417	804	173,300	271	634	120,131	146	170	53,169
Hamilton	14	19	3,868	5	9	1,647	9	10	2,221
Herkimer	351	722	146,558	260	620	111,558	91	102	35,000
Jefferson	1,006	2,122	457,628	605	1,577	289,670	401	545	167,958
Lewis	127	246	49,637	84	194	35,019	43	52	14,618
Livingston	612	1,144	293,680	370	871	183,256	242	273	110,424
Madison	161	280	65,641	123	241	52,235	38	39	13,406
Monroe	13,932	30,748	7,813,099	7,658	19,900	4,645,431	6,274	10,848	3,167,668
Montgomery	336	747	178,446	215	612	133,049	121	135	45,397
Nassau	4,252	8,386	2,619,837	2,574	5,898	1,722,455	1,678	2,488	897,382
Niagara	2,492	5,282	1,046,555	1,525	3,737	639,625	967	1,545	406,930
Oneida	2,258	5,331	1,006,439	1,467	4,087	674,606	791	1,244	331,833
Onondaga	6,230	13,238	2,778,880	3,902	10,029	1,850,452	2,328	3,209	928,428
Ontario	665	1,223	303,402	371	870	166,283	294	353	137,119
Orange	2,716	6,196	1,637,377	1,755	4,462	1,089,948	961	1,734	547,429
Orleans	531	1,105	245,692	319	806	160,298	212	299	85,394
Oswego	805	1,677	376,409	591	1,417	272,176	214	260	104,233
Otsego	132	223	62,633	81	166	31,479	51	57	31,154
Putnam	122	196	76,954	58	127	40,181	64	69	36,773
Rensselaer	1,302	2,790	588,775	920	2,294	419,254	382	496	169,521
Rockland	1,161	3,086	696,498	615	1,760	370,572	546	1,326	325,926
St. Lawrence	1,061	2,038	452,895	660	1,503	287,229	401	535	165,666
Saratoga	277	424	135,751	174	305	82,396	103	119	53,355
Schenectady	1,102	2,201	587,495	735	1,700	390,313	367	501	197,182
Schoharie	85	151	47,241	56	121	24,866	29	30	22,375
Schuyler	141	326	65,749	100	277	46,007	41	49	19,742
Seneca	171	339	73,323	105	242	46,474	66	97	26,849
Steuben	931	1,768	412,244	529	1,264	236,864	402	504	175,380
Suffolk	7,215	14,456	5,866,531	3,747	9,508	3,848,762	3,468	4,948	2,017,769
Sullivan	629	1,282	340,581	436	1,055	241,593	193	227	98,988
Tioga	339	681	155,162	249	566	114,420	90	115	40,742
Tompkins	687	1,305	361,742	404	979	210,989	283	326	150,753
Ulster	1,258	2,517	669,829	912	2,107	510,679	346	410	159,150
Warren	290	538	126,824	171	405	82,913	119	133	43,911
Washington	362	605	183,783	218	443	103,716	144	162	80,067
Wayne	552	991	266,851	322	750	161,384	230	241	105,467
Westchester	8,941	18,410	7,706,603	4,811	11,570	4,448,137	4,130	6,840	3,258,466
Wyoming	180	292	68,416	107	219	44,675	73	73	23,741
Yates	109	175	42,667	58	122	23,037	51	53	19,630

* Expenditures partially estimated.

Table 9
 TEMPORARY ASSISTANCE TO NEEDY FAMILIES (TANF) - FP BY PROGRAM
 Cases, Recipients, Children, Adults and Expenditures by Local District
 March 2002

Local District	Family Assistance					Safety Net Assistance - FP				
	Cases	Recipients	Children	Adults	Expenditures	Cases	Recipients	Children	Adults	Expenditures
New York State	155,637	374,266	268,693	105,573	\$82,714,393	1,631	4,265	2,543	1,722	\$1,121,661
New York City*	102,625	242,472	173,707	68,765	51,685,000	140	318	168	150	40,000
Rest of State	53,012	131,794	94,986	36,808	31,029,393	1,491	3,947	2,375	1,572	1,081,661
Albany	2,130	5,440	3,783	1,657	1,148,447	26	71	41	30	13,426
Allegany	325	835	569	266	137,687	1	4	2	2	735
Broome	1,296	3,269	2,339	930	624,650	30	72	36	36	12,183
Cattaraugus	411	1,035	739	296	176,507	14	42	26	16	4,378
Cayuga	303	707	512	195	137,278	6	16	9	7	2,771
Chautauqua	1,444	3,683	2,489	1,194	690,896	35	86	56	30	18,828
Chemung	699	1,780	1,256	524	302,998	6	18	13	5	4,605
Chenango	175	424	302	122	80,010	0	0	0	0	0
Clinton	394	882	609	273	187,929	10	24	13	11	10,233
Columbia	255	563	402	161	113,322	1	3	2	1	491
Cortland	285	734	486	248	138,761	10	22	11	11	4,686
Delaware	107	226	183	43	39,702	1	1	0	1	828
Dutchess	765	1,715	1,315	400	491,487	24	46	25	21	25,875
Erie	7,083	17,891	12,917	4,974	3,328,470	299	804	464	340	145,730
Essex	139	327	215	112	69,674	4	12	7	5	1,007
Franklin	217	476	325	151	93,540	1	1	0	1	1,786
Fulton	267	623	428	195	110,514	1	3	2	1	10
Genesee	172	448	325	123	75,192	4	11	6	5	2,639
Greene	269	632	415	217	118,861	2	2	0	2	1,270
Hamilton	5	9	6	3	1,647	0	0	0	0	0
Herkimer	259	616	435	181	110,955	1	4	2	2	603
Jefferson	578	1,502	1,022	480	280,184	27	75	39	36	9,486
Lewis	83	189	138	51	34,840	1	5	3	2	179
Livingston	349	816	497	319	165,516	21	55	30	25	17,740
Madison	123	241	201	40	52,235	0	0	0	0	0
Monroe	7,182	18,642	13,711	4,931	4,320,318	476	1,258	813	445	325,113
Montgomery	215	612	434	178	133,049	0	0	0	0	0
Nassau	2,537	5,805	4,471	1,334	1,697,581	37	93	54	39	24,874
Niagara	1,478	3,605	2,477	1,128	611,533	47	132	77	55	28,092
Oneida	1,441	4,003	2,917	1,086	662,481	26	84	51	33	12,125
Onondaga	3,874	9,950	7,157	2,793	1,828,980	28	79	46	33	21,472
Ontario	364	849	592	257	160,062	7	21	11	10	6,221
Orange	1,734	4,410	3,253	1,157	1,072,061	21	52	29	23	17,887
Orleans	314	796	527	269	155,870	5	10	4	6	4,428
Oswego	580	1,390	1,003	387	268,091	11	27	16	11	4,085
Otsego	77	158	127	31	29,593	4	8	4	4	1,886
Putnam	57	125	89	36	32,448	1	2	1	1	7,733
Rensselaer	907	2,253	1,541	712	413,390	13	41	27	14	5,864
Rockland	598	1,713	1,341	372	361,761	17	47	30	17	8,811
St.Lawrence	660	1,503	985	518	287,229	0	0	0	0	0
Saratoga	173	301	273	28	82,059	1	4	3	1	337
Schenectady	719	1,659	1,277	382	379,481	16	41	24	17	10,832
Schoharie	56	121	98	23	24,866	0	0	0	0	0
Schuyler	100	277	189	88	46,007	0	0	0	0	0
Seneca	104	241	166	75	45,984	1	1	0	1	490
Steuben	524	1,254	853	401	234,550	5	10	6	4	2,314
Suffolk	3,667	9,277	6,978	2,299	3,720,957	80	231	140	91	127,805
Sullivan	434	1,048	770	278	240,521	2	7	4	3	1,072
Tioga	246	560	395	165	113,198	3	6	2	4	1,222
Tompkins	385	937	643	294	202,315	19	42	25	17	8,674
Ulster	869	2,001	1,468	533	486,331	43	106	57	49	24,348
Warren	169	397	269	128	81,291	2	8	6	2	1,622
Washington	214	433	307	126	102,513	4	10	6	4	1,203
Wayne	317	735	546	189	158,227	5	15	10	5	3,157
Westchester	4,723	11,345	7,989	3,356	4,298,852	88	225	135	90	149,285
Wyoming	103	209	146	63	43,455	4	10	7	3	1,220
Yates	58	122	86	36	23,037	0	0	0	0	0

* Expenditures partially estimated.

Table 10
SAFETY NET ASSISTANCE - FNP
Cases, Recipients, Children, Adults and Expenditures by Local District
March 2002

Local District	Safety Net Assistance - FNP				
	Cases	Recipients	Children	Adults	Expenditures
New York State	149,192	259,722	101,352	158,370	\$62,158,489
New York City*	112,098	203,476	82,550	120,926	43,288,000
Rest of State	37,094	56,246	18,802	37,444	18,870,489
Albany	1,321	1,798	459	1,339	721,186
Allegany	153	239	77	162	54,117
Broome	762	1,057	290	767	358,680
Cattaraugus	218	271	50	221	67,131
Cayuga	93	126	31	95	43,874
Chautauqua	827	1,134	306	828	295,634
Chemung	268	369	99	270	111,339
Chenango	61	71	11	60	29,404
Clinton	254	283	35	248	128,623
Columbia	150	165	14	151	80,491
Cortland	177	206	30	176	77,802
Delaware	53	55	4	51	22,032
Dutchess	561	663	133	530	245,454
Erie	5,374	8,679	3,209	5,470	2,175,286
Essex	70	81	12	69	34,279
Franklin	103	149	42	107	35,822
Fulton	145	155	2	153	67,387
Genesee	115	128	21	107	50,732
Greene	146	170	25	145	53,169
Hamilton	9	10	0	10	2,221
Herkimer	91	102	16	86	35,000
Jefferson	401	545	133	412	167,958
Lewis	43	52	11	41	14,618
Livingston	242	273	29	244	110,424
Madison	38	39	5	34	13,406
Monroe	6,274	10,848	4,533	6,315	3,167,668
Montgomery	121	135	13	122	45,397
Nassau	1,678	2,488	807	1,681	897,382
Niagara	967	1,545	570	975	406,930
Oneida	791	1,244	443	801	331,833
Onondaga	2,328	3,209	933	2,276	928,428
Ontario	294	353	58	295	137,119
Orange	961	1,734	737	997	547,429
Orleans	212	299	84	215	85,394
Oswego	214	260	45	215	104,233
Otsego	51	57	6	51	31,154
Putnam	64	69	10	59	36,773
Rensselaer	382	496	106	390	169,521
Rockland	546	1,326	684	642	325,926
St.Lawrence	401	535	139	396	165,666
Saratoga	103	119	26	93	53,355
Schenectady	367	501	150	351	197,182
Schoharie	29	30	2	28	22,375
Schuyler	41	49	5	44	19,742
Seneca	66	97	34	63	26,849
Steuben	402	504	96	408	175,380
Suffolk	3,468	4,948	1,490	3,458	2,017,769
Sullivan	193	227	35	192	98,988
Tioga	90	115	24	91	40,742
Tompkins	283	326	43	283	150,753
Ulster	346	410	74	336	159,150
Warren	119	133	11	122	43,911
Washington	144	162	28	134	80,067
Wayne	230	241	21	220	105,467
Westchester	4,130	6,840	2,546	4,294	3,258,466
Wyoming	73	73	2	71	23,741
Yates	51	53	3	50	19,630

* Expenditures partially estimated.

Table 11
SAFETY NET ASSISTANCE - FNP BY CASE CATEGORY
(Maintenance of Effort (MOE) vs. Non-Maintenance of Effort (Non-MOE))
Cases, Recipients, Children, Adults and Expenditures by Local District
March 2002

Local District	Maintenance of Effort (MOE)					Non-Maintenance of Effort (Non-MOE)				
	Cases	Recipients	Children	Adults	Expenditures	Cases	Recipients	Children	Adults	Expenditures
New York State	40,522	139,245	92,667	46,578	\$21,205,669	108,670	120,477	8,685	111,792	\$40,952,820
New York City*	34,967	117,506	77,065	40,441	17,465,000	77,131	85,970	5,485	80,485	25,823,000
Rest of State	5,555	21,739	15,602	6,137	3,740,669	31,539	34,507	3,200	31,307	15,129,820
Albany	131	510	368	142	69,512	1,190	1,288	91	1,197	651,674
Allegany	26	97	68	29	9,770	127	142	9	133	44,347
Broome	83	335	238	97	41,780	679	722	52	670	316,900
Cattaraugus	10	29	16	13	2,662	208	242	34	208	64,469
Cayuga	9	40	29	11	5,518	84	86	2	84	38,356
Chautauqua	96	328	237	91	49,100	731	806	69	737	246,534
Chemung	18	91	68	23	10,868	250	278	31	247	100,471
Chenango	2	9	6	3	1,753	59	62	5	57	27,651
Clinton	9	25	16	9	4,689	245	258	19	239	123,934
Columbia	5	14	9	5	1,266	145	151	5	146	79,225
Cortland	10	36	25	11	2,924	167	170	5	165	74,878
Delaware	0	0	0	0	0	53	55	4	51	22,032
Dutchess	25	92	68	24	8,923	536	571	65	506	236,531
Erie	1,003	3,876	2,786	1,090	447,781	4,371	4,803	423	4,380	1,727,505
Essex	4	13	10	3	3,589	66	68	2	66	30,690
Franklin	17	52	34	18	5,416	86	97	8	89	30,406
Fulton	2	2	0	2	670	143	153	2	151	66,717
Genesee	2	7	5	2	587	113	121	16	105	50,145
Greene	1	7	6	1	567	145	163	19	144	52,602
Hamilton	0	0	0	0	0	9	10	0	10	2,221
Herkimer	1	6	5	1	790	90	96	11	85	34,210
Jefferson	42	157	111	46	20,531	359	388	22	366	147,427
Lewis	3	10	6	4	1,454	40	42	5	37	13,164
Livingston	11	31	19	12	5,175	231	242	10	232	105,249
Madison	0	0	0	0	0	38	39	5	34	13,406
Monroe	1,446	5,588	4,068	1,520	983,125	4,828	5,260	465	4,795	2,184,543
Montgomery	3	11	8	3	837	118	124	5	119	44,560
Nassau	238	865	614	251	145,591	1,440	1,623	193	1,430	751,791
Niagara	179	704	502	202	81,906	788	841	68	773	325,024
Oneida	112	486	360	126	43,005	679	758	83	675	288,828
Onondaga	235	954	704	250	114,538	2,093	2,255	229	2,026	813,890
Ontario	17	62	44	18	8,649	277	291	14	277	128,470
Orange	169	868	645	223	104,204	792	866	92	774	443,225
Orleans	7	30	22	8	3,570	205	269	62	207	81,824
Oswego	14	47	32	15	5,489	200	213	13	200	98,744
Otsego	1	7	5	2	198	50	50	1	49	30,956
Putnam	0	0	0	0	0	64	69	10	59	36,773
Rensselaer	28	107	78	29	14,280	354	389	28	361	155,241
Rockland	110	699	518	181	66,948	436	627	166	461	258,978
St. Lawrence	44	164	116	48	21,894	357	371	23	348	143,772
Saratoga	3	15	12	3	1,067	100	104	14	90	52,288
Schenectady	23	98	71	27	9,542	344	403	79	324	187,640
Schoharie	0	0	0	0	0	29	30	2	28	22,375
Schuyler	0	0	0	0	0	41	49	5	44	19,742
Seneca	8	37	28	9	3,012	58	60	6	54	23,837
Steuben	30	103	71	32	13,844	372	401	25	376	161,536
Suffolk	434	1,695	1,214	481	557,886	3,034	3,253	276	2,977	1,459,883
Sullivan	10	39	28	11	3,979	183	188	7	181	95,009
Tioga	10	33	22	11	4,979	80	82	2	80	35,763
Tompkins	13	42	28	14	7,224	270	284	15	269	143,529
Ulster	22	75	52	23	16,430	324	335	22	313	142,720
Warren	2	4	2	2	1,097	117	129	9	120	42,814
Washington	3	13	10	3	1,263	141	149	18	131	78,804
Wayne	1	5	4	1	222	229	236	17	219	105,245
Westchester	882	3,220	2,214	1,006	830,329	3,248	3,620	332	3,288	2,428,137
Wyoming	1	1	0	1	236	72	72	2	70	23,505
Yates	0	0	0	0	0	51	53	3	50	19,630

* Expenditures partially estimated.

Table 12
SAFETY NET ASSISTANCE - FNP - CASH TOTAL
Cases, Recipients, Children, Adults and Expenditures by Local District
March 2002

Local District	Safety Net Assistance - FNP - Cash Total				
	Cases	Recipients	Children	Adults	Expenditures
New York State	See Note	See Note	See Note	See Note	See Note
New York City	See Note	See Note	See Note	See Note	See Note
Rest of State	21,533	24,205	2,774	21,431	\$9,858,356
Albany	925	1,055	124	931	476,101
Allegany	107	121	10	111	32,641
Broome	468	512	53	459	199,987
Cattaraugus	162	187	25	162	49,897
Cayuga	68	73	6	67	26,343
Chautauqua	562	614	44	570	187,593
Chemung	206	227	19	208	78,379
Chenango	45	45	1	44	16,891
Clinton	204	210	10	200	97,277
Columbia	125	130	3	127	52,655
Cortland	118	130	11	119	43,951
Delaware	43	44	3	41	13,903
Dutchess	323	349	41	308	123,553
Erie	2,360	2,719	361	2,358	940,159
Essex	58	60	0	60	26,040
Franklin	70	76	4	72	22,771
Fulton	110	118	1	117	45,128
Genesee	84	92	15	77	31,249
Greene	123	127	2	125	40,602
Hamilton	9	10	0	10	2,221
Herkimer	71	73	7	66	21,166
Jefferson	251	276	20	256	91,649
Lewis	31	34	4	30	6,709
Livingston	181	192	10	182	79,047
Madison	37	38	5	33	12,456
Monroe	2,653	3,153	528	2,625	1,148,901
Montgomery	89	90	0	90	30,140
Nassau	1,065	1,132	58	1,074	506,506
Niagara	473	514	53	461	176,866
Oneida	522	622	97	525	182,737
Onondaga	1,801	2,033	271	1,762	701,584
Ontario	209	217	8	209	78,670
Orange	543	619	62	557	257,218
Orleans	166	186	20	166	67,017
Oswego	157	170	13	157	71,718
Otsego	36	36	1	35	16,667
Putnam	39	41	3	38	17,513
Rensselaer	247	264	13	251	93,389
Rockland	208	251	39	212	117,690
St.Lawrence	290	298	16	282	105,273
Saratoga	84	100	25	75	35,622
Schenectady	230	260	48	212	111,038
Schoharie	21	22	2	20	16,041
Schuyler	33	41	5	36	10,446
Seneca	37	37	2	35	11,658
Steuben	303	322	15	307	125,819
Suffolk	2,388	2,651	285	2,366	1,143,073
Sullivan	146	160	16	144	60,780
Tioga	75	76	0	76	29,994
Tompkins	166	185	19	166	86,269
Ulster	195	202	15	187	74,613
Warren	97	105	4	101	29,411
Washington	121	128	14	114	64,075
Wayne	170	177	16	161	67,715
Westchester	2,118	2,489	342	2,147	1,665,559
Wyoming	63	63	2	61	18,216
Yates	47	49	3	46	17,770

Note: A breakout of Safety Net Assistance - FNP - Cash and Safety Net Assistance - FNP - Non-Cash data is not available for New York City.

Table 13
SAFETY NET ASSISTANCE - FNP - CASH BY CASE CATEGORY
(Maintenance of Effort (MOE) vs. Non-Maintenance of Effort (Non-MOE))
Cases, Recipients, Children, Adults and Expenditures by Local District
March 2002

Local District	Maintenance of Effort (MOE)					Non-Maintenance of Effort (Non-MOE)				
	Cases	Recipients	Children	Adults	Expenditures	Cases	Recipients	Children	Adults	Expenditures
New York State	See Note	See Note	See Note	See Note	See Note	See Note	See Note	See Note	See Note	See Note
New York City	See Note	See Note	See Note	See Note	See Note	See Note	See Note	See Note	See Note	See Note
Rest of State	677	2,142	1,363	779	\$445,085	20,856	22,063	1,411	20,652	\$9,413,271
Albany	33	124	86	38	19,366	892	931	38	893	456,735
Allegany	4	11	7	4	1,095	103	110	3	107	31,546
Broome	10	22	11	11	3,839	458	490	42	448	196,148
Cattaraugus	2	6	3	3	531	160	181	22	159	49,366
Cayuga	1	5	4	1	535	67	68	2	66	25,808
Chautauqua	7	15	8	7	1,565	555	599	36	563	186,028
Chemung	1	4	3	1	554	205	223	16	207	77,825
Chenango	0	0	0	0	0	45	45	1	44	16,891
Clinton	0	0	0	0	0	204	210	10	200	97,277
Columbia	1	1	0	1	201	124	129	3	126	52,454
Cortland	2	11	8	3	974	116	119	3	116	42,977
Delaware	0	0	0	0	0	43	44	3	41	13,903
Dutchess	4	12	8	4	1,913	319	337	33	304	121,640
Erie	93	300	196	104	42,669	2,267	2,419	165	2,254	897,490
Essex	0	0	0	0	0	58	60	0	60	26,040
Franklin	1	2	1	1	111	69	74	3	71	22,660
Fulton	2	2	0	2	670	108	116	1	115	44,458
Genesee	0	0	0	0	0	84	92	15	77	31,249
Greene	0	0	0	0	0	123	127	2	125	40,602
Hamilton	0	0	0	0	0	9	10	0	10	2,221
Herkimer	0	0	0	0	0	71	73	7	66	21,166
Jefferson	5	19	14	5	2,662	246	257	6	251	88,987
Lewis	1	2	1	1	228	30	32	3	29	6,481
Livingston	2	3	1	2	1,640	179	189	9	180	77,407
Madison	0	0	0	0	0	37	38	5	33	12,456
Monroe	165	502	316	186	103,441	2,488	2,651	212	2,439	1,045,460
Montgomery	0	0	0	0	0	89	90	0	90	30,140
Nassau	12	22	8	14	5,217	1,053	1,110	50	1,060	501,289
Niagara	12	40	23	17	3,837	461	474	30	444	173,029
Oneida	20	72	48	24	7,302	502	550	49	501	175,435
Onondaga	57	204	138	66	30,168	1,744	1,829	133	1,696	671,416
Ontario	0	0	0	0	0	209	217	8	209	78,670
Orange	18	68	49	19	12,387	525	551	13	538	244,831
Orleans	3	10	7	3	1,740	163	176	13	163	65,277
Oswego	4	11	7	4	1,204	153	159	6	153	70,514
Otsego	0	0	0	0	0	36	36	1	35	16,667
Putnam	0	0	0	0	0	39	41	3	38	17,513
Rensselaer	3	8	5	3	1,212	244	256	8	248	92,177
Rockland	10	33	22	11	4,897	198	218	17	201	112,793
St.Lawrence	1	4	2	2	458	289	294	14	280	104,815
Saratoga	3	15	12	3	1,067	81	85	13	72	34,555
Schenectady	1	3	1	2	367	229	257	47	210	110,671
Schoharie	0	0	0	0	0	21	22	2	20	16,041
Schuyler	0	0	0	0	0	33	41	5	36	10,446
Seneca	0	0	0	0	0	37	37	2	35	11,658
Steuben	3	6	3	3	1,374	300	316	12	304	124,445
Suffolk	55	176	107	69	85,497	2,333	2,475	178	2,297	1,057,576
Sullivan	4	15	10	5	1,766	142	145	6	139	59,014
Tioga	2	2	0	2	479	73	74	0	74	29,515
Tompkins	3	11	7	4	2,724	163	174	12	162	83,545
Ulster	1	3	1	2	205	194	199	14	185	74,408
Warren	0	0	0	0	0	97	105	4	101	29,411
Washington	0	0	0	0	0	121	128	14	114	64,075
Wayne	0	0	0	0	0	170	177	16	161	67,715
Westchester	130	397	246	151	100,954	1,988	2,092	96	1,996	1,564,605
Wyoming	1	1	0	1	236	62	62	2	60	17,980
Yates	0	0	0	0	0	47	49	3	46	17,770

Note: Data from New York City does not allow the separation of Safety Net - FNP - Cash and Safety Net - FNP - Non-Cash data.

Table 14
SAFETY NET ASSISTANCE - FNP - NON-CASH TOTAL
Cases, Recipients, Children, Adults and Expenditures by Local District
March 2002

Local District	Safety Net Assistance - FNP - Non-Cash Total				
	Cases	Recipients	Children	Adults	Expenditures
New York State	See Note	See Note	See Note	See Note	See Note
New York City	See Note	See Note	See Note	See Note	See Note
Rest of State	15,561	32,041	16,028	16,013	\$9,012,133
Albany	396	743	335	408	245,085
Allegany	46	118	67	51	21,476
Broome	294	545	237	308	158,693
Cattaraugus	56	84	25	59	17,234
Cayuga	25	53	25	28	17,531
Chautauqua	265	520	262	258	108,041
Chemung	62	142	80	62	32,960
Chenango	16	26	10	16	12,513
Clinton	50	73	25	48	31,346
Columbia	25	35	11	24	27,836
Cortland	59	76	19	57	33,851
Delaware	10	11	1	10	8,129
Dutchess	238	314	92	222	121,901
Erie	3,014	5,960	2,848	3,112	1,235,127
Essex	12	21	12	9	8,239
Franklin	33	73	38	35	13,051
Fulton	35	37	1	36	22,259
Genesee	31	36	6	30	19,483
Greene	23	43	23	20	12,567
Hamilton	0	0	0	0	0
Herkimer	20	29	9	20	13,834
Jefferson	150	269	113	156	76,309
Lewis	12	18	7	11	7,909
Livingston	61	81	19	62	31,377
Madison	1	1	0	1	950
Monroe	3,621	7,695	4,005	3,690	2,018,767
Montgomery	32	45	13	32	15,257
Nassau	613	1,356	749	607	390,876
Niagara	494	1,031	517	514	230,064
Oneida	269	622	346	276	149,096
Onondaga	527	1,176	662	514	226,844
Ontario	85	136	50	86	58,449
Orange	418	1,115	675	440	290,211
Orleans	46	113	64	49	18,377
Oswego	57	90	32	58	32,515
Otsego	15	21	5	16	14,487
Putnam	25	28	7	21	19,260
Rensselaer	135	232	93	139	76,132
Rockland	338	1,075	645	430	208,236
St.Lawrence	111	237	123	114	60,393
Saratoga	19	19	1	18	17,733
Schenectady	137	241	102	139	86,144
Schoharie	8	8	0	8	6,334
Schuyler	8	8	0	8	9,296
Seneca	29	60	32	28	15,191
Steuben	99	182	81	101	49,561
Suffolk	1,080	2,297	1,205	1,092	874,696
Sullivan	47	67	19	48	38,208
Tioga	15	39	24	15	10,748
Tompkins	117	141	24	117	64,484
Ulster	151	208	59	149	84,537
Warren	22	28	7	21	14,500
Washington	23	34	14	20	15,992
Wayne	60	64	5	59	37,752
Westchester	2,012	4,351	2,204	2,147	1,592,907
Wyoming	10	10	0	10	5,525
Yates	4	4	0	4	1,860

Note: A breakout of Safety Net Assistance - FNP - Cash and Safety Net Assistance - FNP - Non-Cash data is not available for New York City.

Table 15
 SAFETY NET ASSISTANCE - FNP - NON-CASH BY CASE CATEGORY
 (Maintenance of Effort (MOE) vs. Non-Maintenance of Effort (Non-MOE))
 Cases, Recipients, Children, Adults and Expenditures by Local District
 March 2002

Local District	Maintenance of Effort (MOE)					Non-Maintenance of Effort (Non-MOE)				
	Cases	Recipients	Children	Adults	Expenditures	Cases	Recipients	Children	Adults	Expenditures
New York State	See Note	See Note	See Note	See Note	See Note	See Note	See Note	See Note	See Note	See Note
New York City	See Note	See Note	See Note	See Note	See Note	See Note	See Note	See Note	See Note	See Note
Rest of State	4,878	19,597	14,239	5,358	\$3,295,584	10,683	12,444	1,789	10,655	\$5,716,549
Albany	98	386	282	104	50,146	298	357	53	304	194,939
Allegany	22	86	61	25	8,675	24	32	6	26	12,801
Broome	73	313	227	86	37,941	221	232	10	222	120,752
Cattaraugus	8	23	13	10	2,131	48	61	12	49	15,103
Cayuga	8	35	25	10	4,983	17	18	0	18	12,548
Chautauqua	89	313	229	84	47,535	176	207	33	174	60,506
Chemung	17	87	65	22	10,314	45	55	15	40	22,646
Chenango	2	9	6	3	1,753	14	17	4	13	10,760
Clinton	9	25	16	9	4,689	41	48	9	39	26,657
Columbia	4	13	9	4	1,065	21	22	2	20	26,771
Cortland	8	25	17	8	1,950	51	51	2	49	31,901
Delaware	0	0	0	0	0	10	11	1	10	8,129
Dutchess	21	80	60	20	7,010	217	234	32	202	114,891
Erie	910	3,576	2,590	986	405,112	2,104	2,384	258	2,126	830,015
Essex	4	13	10	3	3,589	8	8	2	6	4,650
Franklin	16	50	33	17	5,305	17	23	5	18	7,746
Fulton	0	0	0	0	0	35	37	1	36	22,259
Genesee	2	7	5	2	587	29	29	1	28	18,896
Greene	1	7	6	1	567	22	36	17	19	12,000
Hamilton	0	0	0	0	0	0	0	0	0	0
Herkimer	1	6	5	1	790	19	23	4	19	13,044
Jefferson	37	138	97	41	17,869	113	131	16	115	58,440
Lewis	2	8	5	3	1,226	10	10	2	8	6,683
Livingston	9	28	18	10	3,535	52	53	1	52	27,842
Madison	0	0	0	0	0	1	1	0	1	950
Monroe	1,281	5,086	3,752	1,334	879,684	2,340	2,609	253	2,356	1,139,083
Montgomery	3	11	8	3	837	29	34	5	29	14,420
Nassau	226	843	606	237	140,374	387	513	143	370	250,502
Niagara	167	664	479	185	78,069	327	367	38	329	151,995
Oneida	92	414	312	102	35,703	177	208	34	174	113,393
Onondaga	178	750	566	184	84,370	349	426	96	330	142,474
Ontario	17	62	44	18	8,649	68	74	6	68	49,800
Orange	151	800	596	204	91,817	267	315	79	236	198,394
Orleans	4	20	15	5	1,830	42	93	49	44	16,547
Oswego	10	36	25	11	4,285	47	54	7	47	28,230
Otsego	1	7	5	2	198	14	14	0	14	14,289
Putnam	0	0	0	0	0	25	28	7	21	19,260
Rensselaer	25	99	73	26	13,068	110	133	20	113	63,064
Rockland	100	666	496	170	62,051	238	409	149	260	146,185
St.Lawrence	43	160	114	46	21,436	68	77	9	68	38,957
Saratoga	0	0	0	0	0	19	19	1	18	17,733
Schenectady	22	95	70	25	9,175	115	146	32	114	76,969
Schoharie	0	0	0	0	0	8	8	0	8	6,334
Schuyler	0	0	0	0	0	8	8	0	8	9,296
Seneca	8	37	28	9	3,012	21	23	4	19	12,179
Steuben	27	97	68	29	12,470	72	85	13	72	37,091
Suffolk	379	1,519	1,107	412	472,389	701	778	98	680	402,307
Sullivan	6	24	18	6	2,213	41	43	1	42	35,995
Tioga	8	31	22	9	4,500	7	8	2	6	6,248
Tompkins	10	31	21	10	4,500	107	110	3	107	59,984
Ulster	21	72	51	21	16,225	130	136	8	128	68,312
Warren	2	4	2	2	1,097	20	24	5	19	13,403
Washington	3	13	10	3	1,263	20	21	4	17	14,729
Wayne	1	5	4	1	222	59	59	1	58	37,530
Westchester	752	2,823	1,968	855	729,375	1,260	1,528	236	1,292	863,532
Wyoming	0	0	0	0	0	10	10	0	10	5,525
Yates	0	0	0	0	0	4	4	0	4	1,860

Note: Data from New York City does not allow the separation of Safety Net - FNP - Cash and Safety Net - FNP - Non-Cash data.

Table 16
FOOD STAMPS
Households, Persons and Value of Food Stamps Benefits by Local District
March 2002

Local District	Total			Temporary Assistance			Non-Temporary Assistance		
	Households	Persons	Food Stamps Benefits	Households	Persons	Food Stamps Benefits	Households	Persons	Food Stamps Benefits
New York State	680,314	1,346,311	\$125,359,007	472,162	839,226	\$85,513,758	208,152	507,085	\$39,845,249
New York City	424,927	814,790	82,375,222	346,384	635,132	67,149,048	78,543	179,658	15,226,174
Rest of State	255,387	531,521	42,983,785	125,778	204,094	18,364,710	129,609	327,427	24,619,075
Albany	8,707	17,646	1,472,088	4,942	8,305	782,555	3,765	9,341	689,533
Allegany	1,832	3,813	281,960	848	1,364	110,122	984	2,449	171,838
Broome	6,146	12,256	966,719	3,088	4,898	442,191	3,058	7,358	524,528
Cattaraugus	3,093	6,257	450,005	1,215	1,723	142,766	1,878	4,534	307,239
Cayuga	2,182	4,891	382,658	740	1,032	86,402	1,442	3,859	296,256
Chautauqua	5,665	12,049	988,194	2,937	4,998	479,388	2,728	7,051	508,806
Chemung	2,800	6,096	479,012	1,392	2,251	202,068	1,408	3,845	276,944
Chenango	1,767	3,908	305,266	489	702	62,209	1,278	3,206	243,057
Clinton	3,040	5,745	441,242	1,382	1,766	147,233	1,658	3,979	294,009
Columbia	1,411	2,526	200,019	622	856	78,868	789	1,670	121,151
Cortland	1,646	3,422	277,430	713	1,055	94,888	933	2,367	182,542
Delaware	1,282	2,422	174,452	480	591	44,871	802	1,831	129,581
Dutchess	3,541	6,462	509,607	1,621	2,347	218,856	1,920	4,115	290,751
Erie	36,511	74,663	6,116,642	18,609	30,450	2,853,056	17,902	44,213	3,263,586
Essex	1,184	2,230	159,349	513	691	52,592	671	1,539	106,757
Franklin	1,675	3,522	260,892	665	913	73,392	1,010	2,609	187,500
Fulton	1,994	4,422	346,708	760	1,013	91,189	1,234	3,409	255,519
Genesee	1,332	2,730	217,084	522	740	64,931	810	1,990	152,153
Greene	1,365	2,686	214,396	607	910	84,245	758	1,776	130,151
Hamilton	166	252	12,290	27	35	2,629	139	217	9,661
Herkimer	2,044	4,418	343,583	702	1,009	83,541	1,342	3,409	260,042
Jefferson	3,765	8,350	651,328	1,593	2,463	206,972	2,172	5,887	444,356
Lewis	852	1,905	137,284	277	368	26,827	575	1,537	110,457
Livingston	1,726	3,403	270,618	786	1,237	119,105	940	2,166	151,513
Madison	1,579	3,260	250,243	560	648	50,023	1,019	2,612	200,220
Monroe	27,668	59,635	4,859,502	15,308	28,292	2,519,546	12,360	31,343	2,339,956
Montgomery	1,961	4,439	364,845	658	966	85,779	1,303	3,473	279,066
Nassau	9,897	17,401	1,471,370	6,030	9,173	833,724	3,867	8,228	637,646
Niagara	6,480	13,369	1,073,303	3,285	5,475	492,115	3,195	7,894	581,188
Oneida	9,560	20,461	1,627,235	3,890	6,038	523,418	5,670	14,423	1,103,817
Onondaga	13,962	31,192	2,596,765	6,924	12,152	1,148,683	7,038	19,040	1,448,082
Ontario	2,388	4,518	345,074	1,031	1,493	133,700	1,357	3,025	211,374
Orange	7,449	18,841	1,687,086	3,068	5,673	549,986	4,381	13,168	1,137,100
Orleans	1,369	3,047	249,167	613	1,058	98,460	756	1,989	150,707
Oswego	3,756	9,017	712,835	1,335	1,960	171,181	2,421	7,057	541,654
Otsego	1,302	2,485	187,133	450	518	38,228	852	1,967	148,905
Putnam	505	701	45,274	291	348	24,212	214	353	21,062
Rensselaer	4,128	8,540	728,057	1,914	3,086	299,468	2,214	5,454	428,589
Rockland	4,784	15,314	1,270,155	1,790	3,374	235,734	2,994	11,940	1,034,421
St. Lawrence	3,616	7,576	568,712	1,654	2,460	210,911	1,962	5,116	357,801
Saratoga	2,845	5,488	415,279	930	1,033	81,004	1,915	4,455	334,275
Schenectady	4,185	8,987	720,641	1,721	2,515	226,320	2,464	6,472	494,321
Schoharie	820	1,684	121,327	263	318	23,172	557	1,366	98,155
Schuyler	484	1,048	83,001	218	373	33,344	266	675	49,657
Seneca	888	1,770	133,671	315	454	37,255	573	1,316	96,416
Steuben	3,026	6,475	494,614	1,364	2,086	184,057	1,662	4,389	310,557
Suffolk	15,038	27,123	2,238,079	9,223	14,531	1,275,802	5,815	12,592	962,277
Sullivan	2,250	4,561	334,441	1,051	1,539	127,377	1,199	3,022	207,064
Tioga	1,127	2,481	189,769	492	760	68,410	635	1,721	121,359
Tompkins	1,949	3,707	279,545	982	1,473	120,640	967	2,234	158,905
Ulster	3,554	6,636	495,084	1,868	2,863	237,940	1,686	3,773	257,144
Warren	1,730	3,290	254,881	801	1,139	94,208	929	2,151	160,673
Washington	1,690	3,379	255,848	658	837	71,011	1,032	2,542	184,837
Wayne	2,490	4,617	352,869	1,039	1,374	120,761	1,451	3,243	232,108
Westchester	15,592	31,307	2,690,756	9,959	17,651	1,635,318	5,633	13,656	1,055,438
Wyoming	826	1,673	123,023	319	419	35,823	507	1,254	87,200
Yates	763	1,425	105,375	244	298	26,204	519	1,127	79,171

Note: Food Stamps households containing only SSI recipients are counted as TA in accordance with Federal reporting requirements.

Note: Rest of State data does not include the following FAP data: 40 households, 45 persons, and \$5,163 in expenditures.

Table 17
SUPPLEMENTAL SECURITY INCOME
 Recipients, Total Program Expenditures, Federal and State Shares, by Local District
 March 2002

Local District	Expenditures			
	Recipients	Total	Federal	State
New York State*	628,409	\$292,096,236	\$244,206,150	\$47,890,086
New York City	399,585	192,669,711	164,704,519	27,965,192
Rest of State	218,796	95,881,930	77,196,456	18,685,474
Albany	6,187	2,745,564	2,185,343	560,221
Allegany	1,452	651,285	528,132	123,153
Broome	5,116	2,274,299	1,876,267	398,032
Cattaraugus	2,330	1,004,413	822,298	182,115
Cayuga	1,765	756,146	599,207	156,939
Chautauqua	3,953	1,696,921	1,386,991	309,930
Chemung	2,812	1,190,791	984,200	206,591
Chenango	1,347	554,517	469,320	85,197
Clinton	2,470	1,021,198	835,785	185,413
Columbia	1,504	628,789	479,557	149,232
Cortland	1,172	515,318	417,352	97,966
Delaware	1,203	457,038	365,885	91,153
Dutchess	4,294	1,872,835	1,416,209	456,626
Erie	25,046	11,362,415	9,328,532	2,033,883
Essex	950	398,277	295,809	102,468
Franklin	1,572	641,403	507,763	133,640
Fulton	1,634	661,856	525,513	136,343
Genesee	1,000	383,875	299,610	84,265
Greene	1,078	440,815	354,143	86,672
Hamilton	76	26,545	21,837	4,708
Herkimer	1,527	616,268	496,913	119,355
Jefferson	2,856	1,252,745	1,028,630	224,115
Lewis	625	268,760	221,019	47,741
Livingston	923	387,425	323,990	63,435
Madison	1,231	502,924	395,306	107,618
Monroe	17,828	8,417,682	6,929,972	1,487,710
Montgomery	1,335	510,518	413,220	97,298
Nassau	16,680	7,204,094	5,626,468	1,577,626
Niagara	4,785	2,048,465	1,646,760	401,705
Oneida	7,158	3,173,774	2,635,365	538,409
Onondaga	11,201	5,025,515	4,213,511	812,004
Ontario	1,536	640,947	512,055	128,892
Orange	5,999	2,618,784	2,130,279	488,505
Orleans	905	382,890	316,242	66,648
Oswego	2,873	1,275,421	1,076,353	199,068
Otsego	1,312	542,270	413,907	128,363
Putnam	741	339,638	249,284	90,354
Rensselaer	3,145	1,368,966	1,098,911	270,055
Rockland	4,412	1,949,422	1,421,860	527,562
St.Lawrence	3,646	1,589,618	1,331,876	257,742
Saratoga	2,479	983,067	782,510	200,557
Schenectady	3,735	1,638,808	1,336,794	302,014
Schoharie	696	282,581	210,640	71,941
Schuyler	463	215,025	171,108	43,917
Seneca	694	281,208	225,382	55,826
Steuben	2,923	1,271,322	1,070,748	200,574
Suffolk	20,725	9,092,201	7,017,582	2,074,619
Sullivan	2,521	1,089,886	791,493	298,393
Tioga	994	451,268	384,199	67,069
Tompkins	1,487	614,542	483,329	131,213
Ulster	3,977	1,778,740	1,430,746	347,994
Warren	1,399	524,604	421,537	103,067
Washington	1,395	585,784	476,360	109,424
Wayne	1,796	762,694	624,314	138,380
Westchester	14,775	6,487,201	5,250,927	1,236,274
Wyoming	621	248,892	198,369	50,523
Yates	437	173,681	138,744	34,937
Mental Hygiene	10,028	3,544,595	2,305,175	1,239,420

* Only NYS includes Mental Hygiene

Table 18
SUPPLEMENTAL SECURITY INCOME
 SSI Recipients by Living Arrangement and Location
 March 2002

Living Arrangement	New York State	New York City	Rest of State	Mental Hygiene
Living Alone	327,086	224,549	102,484	53
Living With Others	212,499	133,632	78,838	29
Living in Household of Another	24,352	15,553	8,792	7
Congregate Care Level I	5,671	599	468	4,604
Congregate Care Level II	36,766	14,181	22,031	554
Congregate Care Level III	160	36	124	0
Title XIX Institution	21,875	11,035	6,059	4,781
Total	628,409	399,585	218,796	10,028

Table 19
SUPPLEMENTAL SECURITY INCOME
 SSI Recipients by Living Arrangement and Category of Assistance
 March 2002

Living Arrangement	Total	Category of Assistance		
		Aged	Blind	Disabled
Living Alone	327,086	101,533	1,670	223,883
Living With Others	212,499	17,449	1,092	193,958
Living in Household of Another	24,352	10,040	160	14,152
Congregate Care Level I	5,671	290	25	5,356
Congregate Care Level II	36,766	5,024	186	31,556
Congregate Care Level III	160	1	0	159
Title XIX Institution	21,875	3,658	133	18,084
Total	628,409	137,995	3,266	487,148

Table 20
CHILD SUPPORT COLLECTIONS (IV-D)
March 2002

Local District	Total	Current Assistance	Former Assistance	Never Assistance
New York State	\$132,409,244	\$10,658,166	\$52,657,886	\$69,093,192
New York City	49,007,345	5,827,800	21,896,135	21,283,410
Rest of State	83,401,899	4,830,366	30,761,751	47,809,782
Albany	2,422,883	107,886	748,189	1,566,808
Allegany	539,086	49,559	299,509	190,018
Broome	1,595,985	94,504	626,888	874,593
Cattaraugus	907,486	72,835	440,370	394,281
Cayuga	809,514	26,187	309,340	473,987
Chautauqua	1,519,171	136,748	881,788	500,635
Chemung	972,940	56,786	385,839	530,315
Chenango	534,432	26,491	180,976	326,965
Clinton	738,146	32,052	339,478	366,616
Columbia	500,313	14,619	182,364	303,330
Cortland	490,630	19,799	197,796	273,035
Delaware	426,699	22,409	155,459	248,831
Dutchess	2,325,994	89,487	633,908	1,602,599
Erie	5,956,954	409,453	3,240,222	2,307,279
Essex	343,451	14,019	187,505	141,927
Franklin	551,834	18,249	242,932	290,653
Fulton	595,164	24,096	228,419	342,649
Genesee	517,920	18,937	185,455	313,528
Greene	444,985	19,126	172,488	253,371
Hamilton	46,724	150	22,388	24,186
Herkimer	669,422	30,564	304,942	333,916
Jefferson	1,159,008	68,533	447,267	643,208
Lewis	261,697	8,545	93,166	159,986
Livingston	636,708	34,393	227,019	375,296
Madison	533,568	24,548	199,867	309,153
Monroe	5,812,193	516,200	2,669,768	2,626,225
Montgomery	516,633	28,253	220,505	267,875
Nassau	6,995,552	306,503	1,566,145	5,122,904
Niagara	1,790,549	141,123	957,373	692,053
Oneida	1,505,086	112,462	702,557	690,067
Onondaga	4,031,961	292,047	1,832,514	1,907,400
Ontario	1,017,235	44,362	351,262	621,611
Orange	2,744,754	152,479	788,146	1,804,129
Orleans	375,916	30,569	176,869	168,478
Oswego	1,288,924	56,259	656,196	576,469
Otsego	488,817	13,356	139,423	336,038
Putnam	556,665	4,709	92,474	459,482
Rensselaer	1,499,785	76,903	532,006	890,876
Rockland	1,856,403	76,277	496,488	1,283,638
St. Lawrence	1,014,019	55,057	524,084	434,878
Saratoga	1,622,995	30,312	316,386	1,276,297
Schenectady	1,353,479	55,721	398,801	898,957
Schoharie	344,479	16,823	114,695	212,961
Schuyler	165,231	9,053	50,927	105,251
Seneca	353,183	12,124	114,831	226,228
Steuben	927,284	50,948	429,545	446,791
Suffolk	10,567,661	590,681	2,881,342	7,095,638
Sullivan	588,275	39,386	237,425	311,464
Tioga	472,114	28,904	198,768	244,442
Tompkins	661,111	39,529	292,342	329,240
Ulster	1,347,848	64,549	394,906	888,393
Warren	777,385	25,191	254,278	497,916
Washington	670,377	27,094	234,953	408,330
Wayne	983,117	36,990	290,522	655,605
Westchester	4,974,067	444,368	1,681,809	2,847,890
Wyoming	379,717	22,708	142,407	214,602
Yates	218,370	9,451	88,430	120,489

Note: Effective February 1999, collection amounts include collections made on behalf of other states.