

NEW YORK STATE  
OFFICE OF TEMPORARY AND DISABILITY ASSISTANCE  
40 North Pearl Street, Albany, New York 12243-0001

George E. Pataki  
*Governor*

Brian J. Wing  
*Commissioner*

---

# Temporary and Disability Assistance Statistics

## July 2001

---

### Temporary Assistance

**Temporary Assistance recipients totaled 675,982 in July 2001, decreasing 16,507 (-2.4%) from the previous month. Expenditures for Temporary Assistance totaled \$146,229,899 in July, decreasing \$2.2 million (-1.5%) from June 2001.**

### Food Stamps

**In July 2001, recipients of Food Stamps totaled 1,315,144, decreasing 9,810 (-0.7%) from June 2001. Food Stamps expenditures totaled \$114,932,889, decreasing \$1.4 million (-1.2%) from the previous month.**

### Supplemental Security Income

**For July 2001, SSI recipients (including Mental Hygiene) totaled 637,201, increasing 14,231 (+2.3%) over June 2001. Related SSI expenditures totaled \$292,342,573 in July 2001, increasing \$11.0 million (+3.9%) over the previous month.**



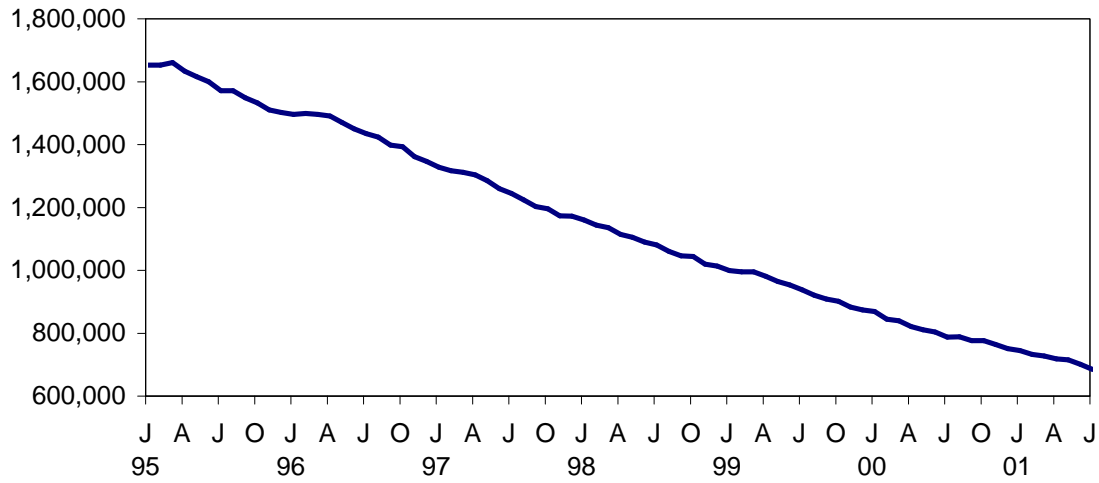
# Table of Contents

## Page Number

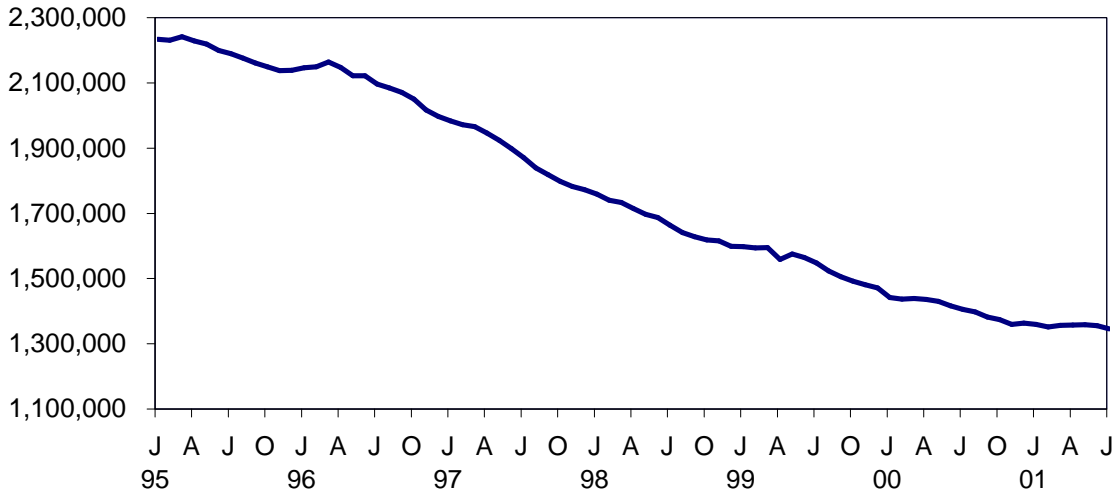
Graphs .....	4
Summary Tables .....	5
Temporary Assistance by Program Area .....	6
Temporary Assistance by Funding Source .....	10
Other Programs .....	18

# NEW YORK STATE JANUARY 1995 - JULY 2001

## TEMPORARY ASSISTANCE RECIPIENTS

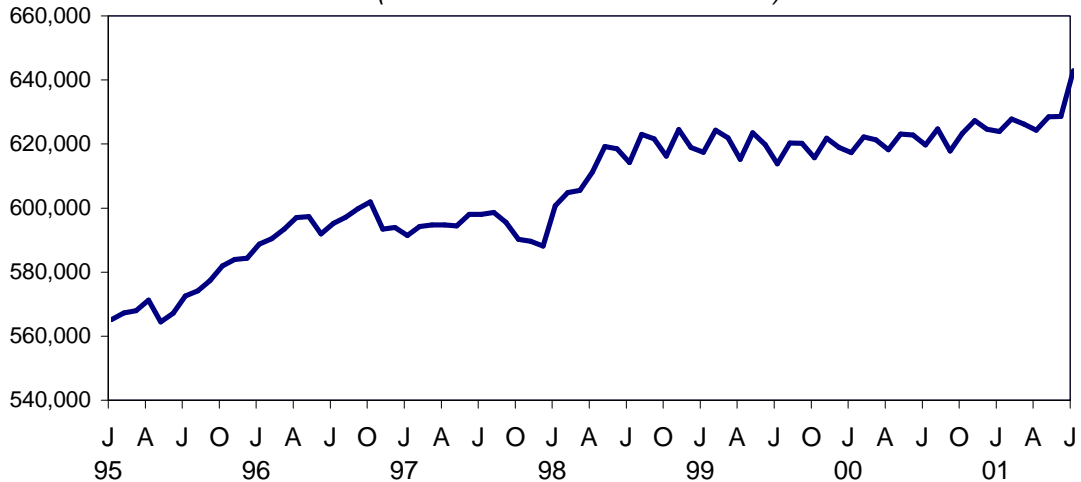


## FOOD STAMPS PERSONS



## SSI PERSONS

(INCLUDING MENTAL HYGIENE)



SELECTED SUMMARY PROGRAM DATA  
BY REGION

Table 1  
TEMPORARY AND DISABILITY ASSISTANCE CASES  
July 2001

Region	Cases				
	Temporary Assistance by Program			Supplemental Security Income	Food Stamps
	Total	Family Assistance	Safety Net Assistance		
New York State	317,194	213,187	104,007	626,537	663,796
New York City	227,662	152,703	74,959	400,983	427,210
Rest of State	89,532	60,484	29,048	225,554	236,586

Table 2  
TEMPORARY AND DISABILITY ASSISTANCE RECIPIENTS  
July 2001

Region	Recipients				
	Temporary Assistance by Program			Supplemental Security Income	Food Stamps
	Total	Family Assistance	Safety Net Assistance		
New York State	675,982	564,231	111,751	626,537	1,315,144
New York City	481,945	402,440	79,505	400,983	828,388
Rest of State	194,037	161,791	32,246	225,554	486,756

Table 3  
TEMPORARY AND DISABILITY ASSISTANCE EXPENDITURES  
July 2001

Region	Expenditures				
	Temporary Assistance by Program			Supplemental Security Income	Food Stamps
	Total	Family Assistance	Safety Net Assistance		
New York State	\$146,229,899	\$109,622,459	\$36,607,440	\$288,675,369	\$114,932,889
New York City	99,421,000	76,473,000	22,948,000	192,310,383	78,016,276
Rest of State	46,808,899	33,149,459	13,659,440	96,364,986	36,916,613

Note: SSI data listed here do not include Mental Hygiene data. See Tables 17 - 19 for total SSI data.

Table 4  
 TEMPORARY ASSISTANCE  
 Year to Year Monthly Comparison by Local District  
 Cases, Recipients and Expenditures  
 July 2001

Local District	July 2001			July 2000			July 1999		
	Cases	Recipients	Expenditures	Cases	Recipients	Expenditures	Cases	Recipients	Expenditures
New York State	317,194	675,982	\$146,229,899	358,240	778,751	\$155,958,774	421,039	929,508	\$ 176,300,688
New York City*	227,662	481,945	99,421,000	260,340	560,463	108,071,000	303,971	665,479	121,572,000
Rest of State	89,532	194,037	46,808,899	97,900	218,288	47,887,774	117,068	264,029	54,728,688
Albany	3,406	7,489	1,861,232	3,241	7,399	1,599,267	3,605	8,539	1,905,061
Allegany	468	1,063	178,784	543	1,268	192,056	697	1,668	215,164
Broome	1,854	4,019	846,406	2,148	4,881	906,813	2,658	6,168	1,112,795
Cattaraugus	602	1,289	240,177	645	1,384	240,722	784	1,750	296,021
Cayuga	403	908	173,729	411	941	162,309	488	1,059	193,905
Chautauqua	2,006	4,322	851,495	1,998	4,328	750,548	2,308	5,389	859,064
Chemung	846	1,850	338,831	892	2,067	346,832	987	2,319	370,033
Chenango	233	506	88,629	244	523	93,410	308	732	124,495
Clinton	550	1,056	217,912	554	1,103	230,686	600	1,204	214,187
Columbia	376	712	164,306	406	811	152,740	454	987	175,121
Cortland	359	783	170,092	403	957	185,306	469	1,164	199,507
Delaware	180	328	69,589	189	359	75,934	203	384	71,626
Dutchess	1,274	2,420	675,653	1,389	2,866	677,904	1,752	3,678	747,550
Erie	13,541	30,015	5,422,593	16,228	36,335	6,204,986	20,059	45,317	7,665,531
Essex	189	374	65,650	215	422	61,513	261	556	105,936
Franklin	271	520	101,709	337	675	119,761	394	800	134,609
Fulton	354	671	147,953	403	801	149,305	413	912	158,954
Genesee	266	549	114,218	262	587	113,373	298	703	146,137
Greene	399	790	172,053	377	753	164,671	414	883	159,383
Hamilton	14	18	3,835	11	18	3,428	16	26	4,288
Herkimer	290	575	120,073	343	734	129,137	412	908	148,663
Jefferson	982	2,017	400,027	1,127	2,387	425,308	1,395	3,064	544,627
Lewis	105	191	37,267	133	255	46,294	186	401	59,134
Livingston	539	1,033	244,764	486	960	227,650	564	1,173	230,896
Madison	151	279	65,018	165	302	75,108	204	402	77,919
Monroe	13,987	31,336	7,053,600	15,963	37,079	8,009,288	18,807	42,924	8,893,423
Montgomery	272	554	126,025	284	613	126,101	317	671	116,200
Nassau	4,363	8,759	2,576,745	4,798	9,775	2,587,251	5,998	12,406	3,206,431
Niagara	2,460	5,193	990,676	2,605	5,456	954,531	3,171	6,872	1,139,514
Oneida	2,263	5,537	935,531	2,558	6,424	1,049,832	3,265	8,124	1,356,012
Onondaga	6,078	13,367	2,839,015	5,724	13,249	2,445,586	6,452	15,288	2,676,792
Ontario	574	1,091	279,609	521	973	217,549	616	1,270	239,182
Orange	2,756	7,357	1,466,653	2,974	7,835	1,595,500	3,147	8,512	1,551,362
Orleans	447	993	194,099	456	1,062	198,707	468	1,087	219,658
Oswego	756	1,651	343,137	788	1,805	334,179	996	2,397	416,768
Otsego	106	181	55,302	108	183	42,393	139	230	55,877
Putnam	115	194	85,569	128	222	78,094	137	238	111,147
Rensselaer	1,192	2,700	554,130	1,166	2,651	555,199	1,382	3,162	561,105
Rockland	1,125	3,239	648,563	1,218	3,566	718,987	1,494	4,074	771,948
St. Lawrence	976	1,976	388,087	1,125	2,320	382,177	1,365	2,922	436,418
Saratoga	240	371	111,322	235	385	107,342	272	467	120,788
Schenectady	1,038	2,202	487,920	970	2,226	408,623	1,249	3,003	536,597
Schoharie	99	167	47,166	90	167	42,567	105	195	37,815
Schuyler	120	242	56,131	112	232	40,447	135	276	49,073
Seneca	170	316	67,246	183	376	65,784	175	396	64,735
Steuben	726	1,511	290,509	847	1,752	304,191	1,188	2,593	436,381
Suffolk	6,829	13,952	4,917,920	7,210	15,363	4,317,230	8,751	18,803	4,932,962
Sullivan	554	1,139	256,663	541	1,122	233,279	617	1,444	254,015
Tioga	268	574	118,046	304	653	115,796	374	864	151,721
Tompkins	634	1,221	290,825	663	1,348	296,972	740	1,451	379,880
Ulster	1,201	2,429	646,586	1,281	2,535	602,892	1,602	3,268	679,789
Warren	235	432	101,038	226	439	98,777	203	431	91,339
Washington	309	536	135,099	290	565	117,015	441	817	171,827
Wayne	458	810	194,956	516	1,048	202,740	658	1,480	267,635
Westchester	9,248	19,721	7,676,320	10,604	23,231	8,204,893	12,598	27,640	8,778,363
Wyoming	193	376	71,422	168	330	64,920	172	340	64,016
Yates	82	133	30,994	94	187	33,871	105	198	39,309

\* Expenditures partially estimated.

Table 5  
**TEMPORARY ASSISTANCE**  
Cases, Recipients, Children, Adults and Expenditures by Local District  
July 2001

Local District	Temporary Assistance				
	Cases	Recipients	Children	Adults	Expenditures
New York State	317,194	675,982	401,033	274,949	\$146,229,899
New York City*	227,662	481,945	281,040	200,905	99,421,000
Rest of State	89,532	194,037	119,993	74,044	46,808,899
Albany	3,406	7,489	4,519	2,970	1,861,232
Allegany	468	1,063	671	392	178,784
Broome	1,854	4,019	2,552	1,467	846,406
Cattaraugus	602	1,289	813	476	240,177
Cayuga	403	908	600	308	173,729
Chautauqua	2,006	4,322	2,625	1,697	851,495
Chemung	846	1,850	1,227	623	338,831
Chenango	233	506	346	160	88,629
Clinton	550	1,056	628	428	217,912
Columbia	376	712	430	282	164,306
Cortland	359	783	468	315	170,092
Delaware	180	328	204	124	69,589
Dutchess	1,274	2,420	1,563	857	675,653
Erie	13,541	30,015	18,342	11,673	5,422,593
Essex	189	374	213	161	65,650
Franklin	271	520	322	198	101,709
Fulton	354	671	391	280	147,953
Genesee	266	549	340	209	114,218
Greene	399	790	448	342	172,053
Hamilton	14	18	7	11	3,835
Herkimer	290	575	375	200	120,073
Jefferson	982	2,017	1,139	878	400,027
Lewis	105	191	114	77	37,267
Livingston	539	1,033	522	511	244,764
Madison	151	279	204	75	65,018
Monroe	13,987	31,336	19,453	11,883	7,053,600
Montgomery	272	554	343	211	126,025
Nassau	4,363	8,759	5,674	3,085	2,576,745
Niagara	2,460	5,193	3,154	2,039	990,676
Oneida	2,263	5,537	3,573	1,964	935,531
Onondaga	6,078	13,367	8,401	4,966	2,839,015
Ontario	574	1,091	609	482	279,609
Orange	2,756	7,357	4,947	2,410	1,466,653
Orleans	447	993	601	392	194,099
Oswego	756	1,651	1,082	569	343,137
Otsego	106	181	117	64	55,302
Putnam	115	194	109	85	85,569
Rensselaer	1,192	2,700	1,689	1,011	554,130
Rockland	1,125	3,239	2,157	1,082	648,563
St. Lawrence	976	1,976	1,126	850	388,087
Saratoga	240	371	287	84	111,322
Schenectady	1,038	2,202	1,496	706	487,920
Schoharie	99	167	105	62	47,166
Schuyler	120	242	149	93	56,131
Seneca	170	316	188	128	67,246
Steuben	726	1,511	899	612	290,509
Suffolk	6,829	13,952	8,570	5,382	4,917,920
Sullivan	554	1,139	753	386	256,663
Tioga	268	574	373	201	118,046
Tompkins	634	1,221	679	542	290,825
Ulster	1,201	2,429	1,598	831	646,586
Warren	235	432	245	187	101,038
Washington	309	536	322	214	135,099
Wayne	458	810	492	318	194,956
Westchester	9,248	19,721	11,461	8,260	7,676,320
Wyoming	193	376	207	169	71,422
Yates	82	133	71	62	30,994

\* Expenditures partially estimated.

Table 6  
**FAMILY ASSISTANCE**  
Cases, Recipients, Children, Adults and Expenditures by Local District  
July 2001

Local District	Family Assistance				
	Cases	Recipients	Children	Adults	Expenditures
New York State	213,187	564,231	396,092	168,139	\$109,622,459
New York City*	152,703	402,440	279,421	123,019	76,473,000
Rest of State	60,484	161,791	116,671	45,120	33,149,459
Albany	2,424	6,437	4,454	1,983	1,356,342
Allegany	366	954	664	290	148,428
Broome	1,313	3,398	2,470	928	608,172
Cattaraugus	447	1,112	796	316	185,368
Cayuga	312	804	586	218	134,682
Chautauqua	1,417	3,685	2,570	1,115	662,726
Chemung	655	1,644	1,201	443	271,322
Chenango	181	447	339	108	69,808
Clinton	364	846	605	241	144,759
Columbia	265	596	423	173	115,858
Cortland	253	667	454	213	121,865
Delaware	119	261	201	60	46,889
Dutchess	837	1,917	1,469	448	455,865
Erie	9,286	25,572	18,198	7,374	3,941,085
Essex	123	305	211	94	38,641
Franklin	194	441	320	121	70,445
Fulton	245	542	377	165	97,243
Genesee	176	456	331	125	74,164
Greene	285	671	444	227	126,828
Hamilton	7	11	7	4	1,677
Herkimer	214	495	367	128	88,549
Jefferson	639	1,654	1,123	531	267,305
Lewis	72	155	108	47	27,379
Livingston	329	790	493	297	145,837
Madison	114	242	200	42	50,659
Monroe	8,913	25,099	18,273	6,826	4,793,181
Montgomery	172	453	343	110	70,189
Nassau	2,994	7,249	5,523	1,726	1,876,948
Niagara	1,710	4,349	3,051	1,298	699,826
Oneida	1,622	4,812	3,500	1,312	682,121
Onondaga	4,130	11,251	8,196	3,055	2,104,169
Ontario	353	846	583	263	153,464
Orange	2,046	6,563	4,852	1,711	1,130,323
Orleans	334	869	592	277	154,813
Oswego	580	1,462	1,066	396	263,031
Otsego	67	137	112	25	26,750
Putnam	55	124	97	27	34,245
Rensselaer	934	2,423	1,677	746	403,565
Rockland	721	2,783	2,114	669	431,718
St.Lawrence	700	1,689	1,119	570	287,310
Saratoga	177	307	282	25	71,655
Schenectady	742	1,875	1,458	417	330,746
Schoharie	63	126	102	24	25,038
Schuyler	85	206	149	57	35,737
Seneca	111	252	180	72	43,001
Steuben	500	1,273	886	387	202,241
Suffolk	4,118	10,970	8,237	2,733	3,527,628
Sullivan	405	987	745	242	194,059
Tioga	217	521	369	152	93,641
Tompkins	410	974	654	320	193,711
Ulster	879	2,039	1,522	517	477,602
Warren	150	345	242	103	65,838
Washington	200	424	311	113	88,644
Wayne	272	608	474	134	124,857
Westchester	6,024	16,284	11,282	5,002	5,243,811
Wyoming	121	299	202	97	51,515
Yates	42	90	67	23	16,186

\* Expenditures partially estimated.



Table 7  
SAFETY NET ASSISTANCE  
Cases, Recipients, Children, Adults and Expenditures by Local District  
July 2001

Local District	Safety Net Assistance				
	Cases	Recipients	Children	Adults	Expenditures
New York State	104,007	111,751	4,941	106,810	\$36,607,440
New York City*	74,959	79,505	1,619	77,886	22,948,000
Rest of State	29,048	32,246	3,322	28,924	13,659,440
Albany	982	1,052	65	987	504,890
Allegany	102	109	7	102	30,356
Broome	541	621	82	539	238,234
Cattaraugus	155	177	17	160	54,809
Cayuga	91	104	14	90	39,047
Chautauqua	589	637	55	582	188,769
Chemung	191	206	26	180	67,509
Chenango	52	59	7	52	18,821
Clinton	186	210	23	187	73,153
Columbia	111	116	7	109	48,448
Cortland	106	116	14	102	48,227
Delaware	61	67	3	64	22,700
Dutchess	437	503	94	409	219,788
Erie	4,255	4,443	144	4,299	1,481,508
Essex	66	69	2	67	27,009
Franklin	77	79	2	77	31,264
Fulton	109	129	14	115	50,710
Genesee	90	93	9	84	40,054
Greene	114	119	4	115	45,225
Hamilton	7	7	0	7	2,158
Herkimer	76	80	8	72	31,524
Jefferson	343	363	16	347	132,722
Lewis	33	36	6	30	9,888
Livingston	210	243	29	214	98,927
Madison	37	37	4	33	14,359
Monroe	5,074	6,237	1,180	5,057	2,260,419
Montgomery	100	101	0	101	55,836
Nassau	1,369	1,510	151	1,359	699,797
Niagara	750	844	103	741	290,850
Oneida	641	725	73	652	253,410
Onondaga	1,948	2,116	205	1,911	734,846
Ontario	221	245	26	219	126,145
Orange	710	794	95	699	336,330
Orleans	113	124	9	115	39,286
Oswego	176	189	16	173	80,106
Otsego	39	44	5	39	28,552
Putnam	60	70	12	58	51,324
Rensselaer	258	277	12	265	150,565
Rockland	404	456	43	413	216,845
St. Lawrence	276	287	7	280	100,777
Saratoga	63	64	5	59	39,667
Schenectady	296	327	38	289	157,174
Schoharie	36	41	3	38	22,128
Schuyler	35	36	0	36	20,394
Seneca	59	64	8	56	24,245
Steuben	226	238	13	225	88,268
Suffolk	2,711	2,982	333	2,649	1,390,292
Sullivan	149	152	8	144	62,604
Tioga	51	53	4	49	24,405
Tompkins	224	247	25	222	97,114
Ulster	322	390	76	314	168,984
Warren	85	87	3	84	35,200
Washington	109	112	11	101	46,455
Wayne	186	202	18	184	70,099
Westchester	3,224	3,437	179	3,258	2,432,509
Wyoming	72	77	5	72	19,907
Yates	40	43	4	39	14,808

\* Expenditures partially estimated.

Table 8  
 TEMPORARY ASSISTANCE BY FUNDING SOURCE  
 Cases, Recipients and Expenditures by Local District  
 July 2001

Local District	Total			Federally Participating - TANF Family Assistance and Safety Net - FP			Federally Non-Participating Safety Net Assistance - FNP		
	Cases	Recipients	Expenditures	Cases	Recipients	Expenditures	Cases	Recipients	Expenditures
New York State	317,194	675,982	\$146,229,899	214,555	567,860	\$110,425,676	102,639	108,122	\$35,804,223
New York City*	227,662	481,945	99,421,000	152,856	402,824	76,522,000	74,806	79,121	22,899,000
Rest of State	89,532	194,037	46,808,899	61,699	165,036	33,903,676	27,833	29,001	12,905,223
Albany	3,406	7,489	1,861,232	2,453	6,520	1,371,331	953	969	489,901
Allegany	468	1,063	178,784	366	954	148,428	102	109	30,356
Broome	1,854	4,019	846,406	1,350	3,485	623,457	504	534	222,949
Cattaraugus	602	1,289	240,177	451	1,124	186,087	151	165	54,090
Cayuga	403	908	173,729	316	818	136,024	87	90	37,705
Chautauqua	2,006	4,322	851,495	1,447	3,742	673,321	559	580	178,174
Chemung	846	1,850	338,831	661	1,659	275,173	185	191	63,658
Chenango	233	506	88,629	183	454	70,283	50	52	18,346
Clinton	550	1,056	217,912	372	871	147,491	178	185	70,421
Columbia	376	712	164,306	265	596	115,858	111	116	48,448
Cortland	359	783	170,092	257	679	123,861	102	104	46,231
Delaware	180	328	69,589	120	262	47,226	60	66	22,363
Dutchess	1,274	2,420	675,653	860	1,977	466,998	414	443	208,655
Erie	13,541	30,015	5,422,593	9,317	25,653	3,956,938	4,224	4,362	1,465,655
Essex	189	374	65,650	123	305	38,641	66	69	27,009
Franklin	271	520	101,709	194	441	70,445	77	79	31,264
Fulton	354	671	147,953	251	559	100,908	103	112	47,045
Genesee	266	549	114,218	177	457	74,369	89	92	39,849
Greene	399	790	172,053	286	672	127,763	113	118	44,290
Hamilton	14	18	3,835	7	11	1,677	7	7	2,158
Herkimer	290	575	120,073	216	499	89,332	74	76	30,741
Jefferson	982	2,017	400,027	657	1,684	274,143	325	333	125,884
Lewis	105	191	37,267	72	155	27,379	33	36	9,888
Livingston	539	1,033	244,764	348	834	157,534	191	199	87,230
Madison	151	279	65,018	114	242	50,659	37	37	14,359
Monroe	13,987	31,336	7,053,600	9,444	26,597	5,106,470	4,543	4,739	1,947,130
Montgomery	272	554	126,025	172	453	70,189	100	101	55,836
Nassau	4,363	8,759	2,576,745	3,053	7,394	1,920,257	1,310	1,365	656,488
Niagara	2,460	5,193	990,676	1,756	4,471	718,262	704	722	272,414
Oneida	2,263	5,537	935,531	1,646	4,870	695,607	617	667	239,924
Onondaga	6,078	13,367	2,839,015	4,163	11,343	2,121,292	1,915	2,024	717,723
Ontario	574	1,091	279,609	360	872	155,394	214	219	124,215
Orange	2,756	7,357	1,466,653	2,073	6,640	1,141,900	683	717	324,753
Orleans	447	993	194,099	335	870	155,158	112	123	38,941
Oswego	756	1,651	343,137	584	1,475	264,468	172	176	78,669
Otsego	106	181	55,302	69	141	27,797	37	40	27,505
Putnam	115	194	85,569	58	133	36,145	57	61	49,424
Rensselaer	1,192	2,700	554,130	939	2,438	405,286	253	262	148,844
Rockland	1,125	3,239	648,563	741	2,835	444,083	384	404	204,480
St. Lawrence	976	1,976	388,087	703	1,696	289,618	273	280	98,469
Saratoga	240	371	111,322	177	307	71,655	63	64	39,667
Schenectady	1,038	2,202	487,920	762	1,916	339,786	276	286	148,134
Schoharie	99	167	47,166	63	126	25,038	36	41	22,128
Schuyler	120	242	56,131	85	206	35,737	35	36	20,394
Seneca	170	316	67,246	117	262	45,932	53	54	21,314
Steuben	726	1,511	290,509	504	1,284	204,802	222	227	85,707
Suffolk	6,829	13,952	4,917,920	4,198	11,195	3,623,598	2,631	2,757	1,294,322
Sullivan	554	1,139	256,663	405	987	194,059	149	152	62,604
Tioga	268	574	118,046	218	523	94,311	50	51	23,735
Tompkins	634	1,221	290,825	423	995	199,789	211	226	91,036
Ulster	1,201	2,429	646,586	918	2,142	501,399	283	287	145,187
Warren	235	432	101,038	150	345	65,838	85	87	35,200
Washington	309	536	135,099	202	426	89,717	107	110	45,382
Wayne	458	810	194,956	276	617	127,595	182	193	67,361
Westchester	9,248	19,721	7,676,320	6,077	16,430	5,308,518	3,171	3,291	2,367,802
Wyoming	193	376	71,422	123	304	52,464	70	72	18,958
Yates	82	133	30,994	42	90	16,186	40	43	14,808

\* Expenditures partially estimated.

Table 9  
 TEMPORARY ASSISTANCE TO NEEDY FAMILIES (TANF) - FP BY PROGRAM  
 Cases, Recipients, Children, Adults and Expenditures by Local District  
 July 2001

Local District	Family Assistance					Safety Net Assistance - FP				
	Cases	Recipients	Children	Adults	Expenditures	Cases	Recipients	Children	Adults	Expenditures
New York State	213,187	564,231	396,092	168,139	\$109,622,459	1,368	3,629	2,221	1,408	\$803,217
New York City*	152,703	402,440	279,421	123,019	76,473,000	153	384	215	169	49,000
Rest of State	60,484	161,791	116,671	45,120	33,149,459	1,215	3,245	2,006	1,239	754,217
Albany	2,424	6,437	4,454	1,983	1,356,342	29	83	51	32	14,989
Allegany	366	954	664	290	148,428	0	0	0	0	0
Broome	1,313	3,398	2,470	928	608,172	37	87	46	41	15,285
Cattaraugus	447	1,112	796	316	185,368	4	12	8	4	719
Cayuga	312	804	586	218	134,682	4	14	9	5	1,342
Chautauqua	1,417	3,685	2,570	1,115	662,726	30	57	36	21	10,595
Chemung	655	1,644	1,201	443	271,322	6	15	10	5	3,851
Chenango	181	447	339	108	69,808	2	7	5	2	475
Clinton	364	846	605	241	144,759	8	25	16	9	2,732
Columbia	265	596	423	173	115,858	0	0	0	0	0
Cortland	253	667	454	213	121,865	4	12	8	4	1,996
Delaware	119	261	201	60	46,889	1	1	0	1	337
Dutchess	837	1,917	1,469	448	455,865	23	60	35	25	11,133
Erie	9,286	25,572	18,198	7,374	3,941,085	31	81	47	34	15,853
Essex	123	305	211	94	38,641	0	0	0	0	0
Franklin	194	441	320	121	70,445	0	0	0	0	0
Fulton	245	542	377	165	97,243	6	17	9	8	3,665
Genesee	176	456	331	125	74,164	1	1	0	1	205
Greene	285	671	444	227	126,828	1	1	0	1	935
Hamilton	7	11	7	4	1,677	0	0	0	0	0
Herkimer	214	495	367	128	88,549	2	4	3	1	783
Jefferson	639	1,654	1,123	531	267,305	18	30	11	19	6,838
Lewis	72	155	108	47	27,379	0	0	0	0	0
Livingston	329	790	493	297	145,837	19	44	22	22	11,697
Madison	114	242	200	42	50,659	0	0	0	0	0
Monroe	8,913	25,099	18,273	6,826	4,793,181	531	1,498	977	521	313,289
Montgomery	172	453	343	110	70,189	0	0	0	0	0
Nassau	2,994	7,249	5,523	1,726	1,876,948	59	145	84	61	43,309
Niagara	1,710	4,349	3,051	1,298	699,826	46	122	76	46	18,436
Oneida	1,622	4,812	3,500	1,312	682,121	24	58	35	23	13,486
Onondaga	4,130	11,251	8,196	3,055	2,104,169	33	92	56	36	17,123
Ontario	353	846	583	263	153,464	7	26	17	9	1,930
Orange	2,046	6,563	4,852	1,711	1,130,323	27	77	43	34	11,577
Orleans	334	869	592	277	154,813	1	1	0	1	345
Oswego	580	1,462	1,066	396	263,031	4	13	9	4	1,437
Otsego	67	137	112	25	26,750	2	4	2	2	1,047
Putnam	55	124	97	27	34,245	3	9	5	4	1,900
Rensselaer	934	2,423	1,677	746	403,565	5	15	10	5	1,721
Rockland	721	2,783	2,114	669	431,718	20	52	32	20	12,365
St.Lawrence	700	1,689	1,119	570	287,310	3	7	3	4	2,308
Saratoga	177	307	282	25	71,655	0	0	0	0	0
Schenectady	742	1,875	1,458	417	330,746	20	41	21	20	9,040
Schoharie	63	126	102	24	25,038	0	0	0	0	0
Schuyler	85	206	149	57	35,737	0	0	0	0	0
Seneca	111	252	180	72	43,001	6	10	4	6	2,931
Steuben	500	1,273	886	387	202,241	4	11	6	5	2,561
Suffolk	4,118	10,970	8,237	2,733	3,527,628	80	225	142	83	95,970
Sullivan	405	987	745	242	194,059	0	0	0	0	0
Tioga	217	521	369	152	93,641	1	2	1	1	670
Tompkins	410	974	654	320	193,711	13	21	9	12	6,078
Ulster	879	2,039	1,522	517	477,602	39	103	58	45	23,797
Warren	150	345	242	103	65,838	0	0	0	0	0
Washington	200	424	311	113	88,644	2	2	1	1	1,073
Wayne	272	608	474	134	124,857	4	9	5	4	2,738
Westchester	6,024	16,284	11,282	5,002	5,243,811	53	146	91	55	64,707
Wyoming	121	299	202	97	51,515	2	5	3	2	949
Yates	42	90	67	23	16,186	0	0	0	0	0

\* Expenditures partially estimated.

Table 10  
**SAFETY NET ASSISTANCE - FNP**  
Cases, Recipients, Children, Adults and Expenditures by Local District  
July 2001

Local District	Safety Net Assistance - FNP				
	Cases	Recipients	Children	Adults	Expenditures
New York State	102,639	108,122	2,720	105,402	\$35,804,223
New York City*	74,806	79,121	1,404	77,717	22,899,000
Rest of State	27,833	29,001	1,316	27,685	12,905,223
Albany	953	969	14	955	489,901
Allegany	102	109	7	102	30,356
Broome	504	534	36	498	222,949
Cattaraugus	151	165	9	156	54,090
Cayuga	87	90	5	85	37,705
Chautauqua	559	580	19	561	178,174
Chemung	185	191	16	175	63,658
Chenango	50	52	2	50	18,346
Clinton	178	185	7	178	70,421
Columbia	111	116	7	109	48,448
Cortland	102	104	6	98	46,231
Delaware	60	66	3	63	22,363
Dutchess	414	443	59	384	208,655
Erie	4,224	4,362	97	4,265	1,465,655
Essex	66	69	2	67	27,009
Franklin	77	79	2	77	31,264
Fulton	103	112	5	107	47,045
Genesee	89	92	9	83	39,849
Greene	113	118	4	114	44,290
Hamilton	7	7	0	7	2,158
Herkimer	74	76	5	71	30,741
Jefferson	325	333	5	328	125,884
Lewis	33	36	6	30	9,888
Livingston	191	199	7	192	87,230
Madison	37	37	4	33	14,359
Monroe	4,543	4,739	203	4,536	1,947,130
Montgomery	100	101	0	101	55,836
Nassau	1,310	1,365	67	1,298	656,488
Niagara	704	722	27	695	272,414
Oneida	617	667	38	629	239,924
Onondaga	1,915	2,024	149	1,875	717,723
Ontario	214	219	9	210	124,215
Orange	683	717	52	665	324,753
Orleans	112	123	9	114	38,941
Oswego	172	176	7	169	78,669
Otsego	37	40	3	37	27,505
Putnam	57	61	7	54	49,424
Rensselaer	253	262	2	260	148,844
Rockland	384	404	11	393	204,480
St.Lawrence	273	280	4	276	98,469
Saratoga	63	64	5	59	39,667
Schenectady	276	286	17	269	148,134
Schoharie	36	41	3	38	22,128
Schuyler	35	36	0	36	20,394
Seneca	53	54	4	50	21,314
Steuben	222	227	7	220	85,707
Suffolk	2,631	2,757	191	2,566	1,294,322
Sullivan	149	152	8	144	62,604
Tioga	50	51	3	48	23,735
Tompkins	211	226	16	210	91,036
Ulster	283	287	18	269	145,187
Warren	85	87	3	84	35,200
Washington	107	110	10	100	45,382
Wayne	182	193	13	180	67,361
Westchester	3,171	3,291	88	3,203	2,367,802
Wyoming	70	72	2	70	18,958
Yates	40	43	4	39	14,808

\* Expenditures partially estimated.

Table 11  
SAFETY NET ASSISTANCE - FNP BY CASE SIZE CATEGORY  
Cases, Recipients, Children, Adults and Expenditures by Local District  
July 2001

Local District	One Person					Multi-Person				
	Cases	Recipients	Children	Adults	Expenditures	Cases	Recipients	Children	Adults	Expenditures
New York State	See Note	See Note	See Note	See Note	See Note	See Note	See Note	See Note	See Note	See Note
New York City	See Note	See Note	See Note	See Note	See Note	See Note	See Note	See Note	See Note	See Note
Rest of State	26,898	26,898	638	26,260	\$12,370,142	935	2,103	678	1,425	\$535,081
Albany	939	939	4	935	482,648	14	30	10	20	7,253
Allegany	96	96	3	93	27,345	6	13	4	9	3,011
Broome	481	481	18	463	210,464	23	53	18	35	12,485
Cattaraugus	140	140	2	138	50,466	11	25	7	18	3,624
Cayuga	84	84	2	82	36,763	3	6	3	3	942
Chautauqua	541	541	8	533	171,829	18	39	11	28	6,345
Chemung	179	179	8	171	61,102	6	12	8	4	2,556
Chenango	48	48	0	48	17,949	2	4	2	2	397
Clinton	172	172	5	167	67,829	6	13	2	11	2,592
Columbia	106	106	3	103	47,162	5	10	4	6	1,286
Cortland	100	100	5	95	45,559	2	4	1	3	672
Delaware	54	54	2	52	18,904	6	12	1	11	3,459
Dutchess	395	395	34	361	196,160	19	48	25	23	12,495
Erie	4,109	4,109	47	4,062	1,408,514	115	253	50	203	57,141
Essex	64	64	2	62	26,492	2	5	0	5	517
Franklin	75	75	1	74	30,481	2	4	1	3	783
Fulton	96	96	0	96	44,108	7	16	5	11	2,937
Genesee	87	87	4	83	38,975	2	5	5	0	874
Greene	108	108	2	106	41,028	5	10	2	8	3,262
Hamilton	7	7	0	7	2,158	0	0	0	0	0
Herkimer	73	73	4	69	30,176	1	3	1	2	565
Jefferson	318	318	5	313	123,363	7	15	0	15	2,521
Lewis	31	31	1	30	8,774	2	5	5	0	1,114
Livingston	183	183	4	179	81,746	8	16	3	13	5,484
Madison	37	37	4	33	14,359	0	0	0	0	0
Monroe	4,406	4,406	71	4,335	1,870,464	137	333	132	201	76,666
Montgomery	99	99	0	99	55,457	1	2	0	2	379
Nassau	1,264	1,264	35	1,229	628,387	46	101	32	69	28,101
Niagara	691	691	14	677	267,271	13	31	13	18	5,143
Oneida	574	574	16	558	223,826	43	93	22	71	16,098
Onondaga	1,836	1,836	70	1,766	679,899	79	188	79	109	37,824
Ontario	210	210	6	204	122,692	4	9	3	6	1,523
Orange	655	655	29	626	309,654	28	62	23	39	15,099
Orleans	104	104	1	103	35,615	8	19	8	11	3,326
Oswego	169	169	4	165	77,166	3	7	3	4	1,503
Otsego	35	35	1	34	26,585	2	5	2	3	920
Putnam	53	53	6	47	47,871	4	8	1	7	1,553
Rensselaer	244	244	0	244	145,067	9	18	2	16	3,777
Rockland	364	364	5	359	191,081	20	40	6	34	13,399
St.Lawrence	266	266	4	262	96,025	7	14	0	14	2,444
Saratoga	62	62	5	57	38,107	1	2	0	2	1,560
Schenectady	269	269	8	261	140,348	7	17	9	8	7,786
Schoharie	32	32	1	31	19,691	4	9	2	7	2,437
Schuyler	34	34	0	34	20,018	1	2	0	2	376
Seneca	52	52	3	49	21,106	1	2	1	1	208
Steuben	218	218	2	216	84,332	4	9	5	4	1,375
Suffolk	2,535	2,535	97	2,438	1,223,550	96	222	94	128	70,772
Sullivan	146	146	6	140	58,372	3	6	2	4	4,232
Tioga	49	49	3	46	23,502	1	2	0	2	233
Tompkins	200	200	6	194	86,673	11	26	10	16	4,363
Ulster	279	279	11	268	142,563	4	8	7	1	2,624
Warren	83	83	3	80	34,433	2	4	0	4	767
Washington	105	105	5	100	44,442	2	5	5	0	940
Wayne	173	173	5	168	63,576	9	20	8	12	3,785
Westchester	3,063	3,063	49	3,014	2,275,572	108	228	39	189	92,230
Wyoming	68	68	2	66	18,486	2	4	0	4	472
Yates	37	37	2	35	13,957	3	6	2	4	851

Note: A breakout of One-Person and Multi-Person cases is not available for New York City.

Table 12  
**SAFETY NET ASSISTANCE - FNP - CASH TOTAL**  
Cases, Recipients, Children, Adults and Expenditures by Local District  
July 2001

Local District	Safety Net Assistance - FNP - Cash Total				
	Cases	Recipients	Children	Adults	Expenditures
New York State	82,183	87,169	2,353	84,816	See Note
New York City	62,013	65,986	1,280	64,706	See Note
Rest of State	20,170	21,183	1,073	20,110	\$9,042,877
Albany	951	967	14	953	489,280
Allegany	90	97	7	90	28,071
Broome	358	385	35	350	141,853
Cattaraugus	134	148	8	140	49,203
Cayuga	64	66	1	65	24,017
Chautauqua	460	479	17	462	143,253
Chemung	159	165	16	149	48,490
Chenango	41	42	0	42	14,537
Clinton	148	153	4	149	59,302
Columbia	98	102	5	97	37,003
Cortland	85	87	5	82	34,858
Delaware	55	61	3	58	18,844
Dutchess	213	238	41	197	104,810
Erie	3,002	3,118	90	3,028	1,082,021
Essex	52	55	0	55	20,906
Franklin	56	58	1	57	23,515
Fulton	68	76	4	72	33,431
Genesee	70	71	5	66	31,126
Greene	94	97	0	97	33,871
Hamilton	7	7	0	7	2,158
Herkimer	62	64	5	59	24,520
Jefferson	228	235	3	232	76,876
Lewis	24	27	6	21	5,806
Livingston	149	157	7	150	70,727
Madison	32	32	4	28	9,431
Monroe	2,494	2,648	170	2,478	1,022,561
Montgomery	90	91	0	91	53,841
Nassau	970	1,012	31	981	455,124
Niagara	412	426	24	402	139,642
Oneida	468	513	33	480	157,627
Onondaga	1,651	1,755	126	1,629	604,547
Ontario	146	151	9	142	63,320
Orange	406	425	9	416	156,126
Orleans	104	115	8	107	37,311
Oswego	138	142	7	135	55,708
Otsego	28	31	3	28	20,775
Putnam	35	38	2	36	24,651
Rensselaer	182	189	1	188	89,888
Rockland	176	190	10	180	94,007
St.Lawrence	238	245	4	241	76,840
Saratoga	53	54	4	50	32,563
Schenectady	192	201	17	184	92,361
Schoharie	30	35	3	32	16,774
Schuyler	27	28	0	28	15,257
Seneca	36	37	4	33	11,432
Steuben	175	180	7	173	62,662
Suffolk	2,101	2,223	163	2,060	891,711
Sullivan	97	100	8	92	39,275
Tioga	45	46	2	44	15,471
Tompkins	125	137	13	124	47,352
Ulster	188	192	16	176	88,050
Warren	75	77	3	74	26,972
Washington	91	94	8	86	34,267
Wayne	139	150	13	137	43,331
Westchester	2,457	2,565	88	2,477	1,934,048
Wyoming	62	64	2	62	16,952
Yates	39	42	4	38	14,522

Note: A breakout of Safety Net Assistance - FNP - Cash and Safety Net Assistance - FNP - Non-Cash expenditures is not available for New York City.

Table 13  
SAFETY NET ASSISTANCE - FNP - CASH BY CASE SIZE CATEGORY  
Cases, Recipients, Children, Adults and Expenditures by Local District  
July 2001

Local District	One Person					Multi-Person				
	Cases	Recipients	Children	Adults	Expenditures	Cases	Recipients	Children	Adults	Expenditures
New York State	See Note	See Note	See Note	See Note	See Note	See Note	See Note	See Note	See Note	See Note
New York City	See Note	See Note	See Note	See Note	See Note	See Note	See Note	See Note	See Note	See Note
Rest of State	19,356	19,356	507	18,849	\$8,568,759	814	1,827	566	1,261	\$474,118
Albany	937	937	4	933	482,027	14	30	10	20	7,253
Allegany	84	84	3	81	25,060	6	13	4	9	3,011
Broome	337	337	17	320	130,379	21	48	18	30	11,474
Cattaraugus	123	123	1	122	45,579	11	25	7	18	3,624
Cayuga	62	62	0	62	23,578	2	4	1	3	439
Chautauqua	444	444	8	436	137,389	16	35	9	26	5,864
Chemung	153	153	8	145	45,934	6	12	8	4	2,556
Chenango	40	40	0	40	14,395	1	2	0	2	142
Clinton	143	143	4	139	56,891	5	10	0	10	2,411
Columbia	94	94	3	91	36,064	4	8	2	6	939
Cortland	83	83	4	79	34,186	2	4	1	3	672
Delaware	49	49	2	47	15,385	6	12	1	11	3,459
Dutchess	198	198	20	178	93,743	15	40	21	19	11,067
Erie	2,907	2,907	46	2,861	1,031,549	95	211	44	167	50,472
Essex	50	50	0	50	20,389	2	5	0	5	517
Franklin	54	54	0	54	22,732	2	4	1	3	783
Fulton	62	62	0	62	30,844	6	14	4	10	2,587
Genesee	69	69	3	66	30,674	1	2	2	0	452
Greene	91	91	0	91	31,233	3	6	0	6	2,638
Hamilton	7	7	0	7	2,158	0	0	0	0	0
Herkimer	61	61	4	57	23,955	1	3	1	2	565
Jefferson	222	222	3	219	74,738	6	13	0	13	2,138
Lewis	22	22	1	21	4,692	2	5	5	0	1,114
Livingston	141	141	4	137	65,243	8	16	3	13	5,484
Madison	32	32	4	28	9,431	0	0	0	0	0
Monroe	2,382	2,382	68	2,314	958,258	112	266	102	164	64,303
Montgomery	89	89	0	89	53,462	1	2	0	2	379
Nassau	932	932	16	916	431,307	38	80	15	65	23,817
Niagara	402	402	14	388	136,025	10	24	10	14	3,617
Oneida	429	429	15	414	142,751	39	84	18	66	14,876
Onondaga	1,577	1,577	51	1,526	568,748	74	178	75	103	35,799
Ontario	142	142	6	136	61,797	4	9	3	6	1,523
Orange	389	389	3	386	145,846	17	36	6	30	10,280
Orleans	96	96	0	96	33,985	8	19	8	11	3,326
Oswego	135	135	4	131	54,205	3	7	3	4	1,503
Otsego	26	26	1	25	19,855	2	5	2	3	920
Putnam	32	32	2	30	23,390	3	6	0	6	1,261
Rensselaer	175	175	0	175	86,845	7	14	1	13	3,043
Rockland	162	162	5	157	84,141	14	28	5	23	9,866
St.Lawrence	231	231	4	227	74,396	7	14	0	14	2,444
Saratoga	52	52	4	48	31,003	1	2	0	2	1,560
Schenectady	186	186	8	178	85,026	6	15	9	6	7,335
Schoharie	26	26	1	25	14,337	4	9	2	7	2,437
Schuyler	26	26	0	26	14,881	1	2	0	2	376
Seneca	35	35	3	32	11,224	1	2	1	1	208
Steuben	171	171	2	169	61,287	4	9	5	4	1,375
Suffolk	2,009	2,009	76	1,933	823,004	92	214	87	127	68,707
Sullivan	94	94	6	88	35,043	3	6	2	4	4,232
Tioga	44	44	2	42	15,238	1	2	0	2	233
Tompkins	117	117	4	113	44,235	8	20	9	11	3,117
Ulster	184	184	9	175	85,426	4	8	7	1	2,624
Warren	73	73	3	70	26,205	2	4	0	4	767
Washington	89	89	3	86	33,327	2	5	5	0	940
Wayne	130	130	5	125	39,546	9	20	8	12	3,785
Westchester	2,360	2,360	49	2,311	1,855,567	97	205	39	166	78,481
Wyoming	60	60	2	58	16,480	2	4	0	4	472
Yates	36	36	2	34	13,671	3	6	2	4	851

Note: A breakout of One-Person and Multi-Person cases is not available for New York City.

Table 14  
**SAFETY NET ASSISTANCE - FNP - NON-CASH TOTAL**  
Cases, Recipients, Children, Adults and Expenditures by Local District  
July 2001

Local District	Safety Net Assistance - FNP - Non-Cash Total				
	Cases	Recipients	Children	Adults	Expenditures
New York State	20,456	20,953	367	20,586	See Note
New York City	12,793	13,135	124	13,011	See Note
Rest of State	7,663	7,818	243	7,575	\$3,862,346
Albany	2	2	0	2	621
Allegany	12	12	0	12	2,285
Broome	146	149	1	148	81,096
Cattaraugus	17	17	1	16	4,887
Cayuga	23	24	4	20	13,688
Chautauqua	99	101	2	99	34,921
Chemung	26	26	0	26	15,168
Chenango	9	10	2	8	3,809
Clinton	30	32	3	29	11,119
Columbia	13	14	2	12	11,445
Cortland	17	17	1	16	11,373
Delaware	5	5	0	5	3,519
Dutchess	201	205	18	187	103,845
Erie	1,222	1,244	7	1,237	383,634
Essex	14	14	2	12	6,103
Franklin	21	21	1	20	7,749
Fulton	35	36	1	35	13,614
Genesee	19	21	4	17	8,723
Greene	19	21	4	17	10,419
Hamilton	0	0	0	0	0
Herkimer	12	12	0	12	6,221
Jefferson	97	98	2	96	49,008
Lewis	9	9	0	9	4,082
Livingston	42	42	0	42	16,503
Madison	5	5	0	5	4,928
Monroe	2,049	2,091	33	2,058	924,569
Montgomery	10	10	0	10	1,995
Nassau	340	353	36	317	201,364
Niagara	292	296	3	293	132,772
Oneida	149	154	5	149	82,297
Onondaga	264	269	23	246	113,176
Ontario	68	68	0	68	60,895
Orange	277	292	43	249	168,627
Orleans	8	8	1	7	1,630
Oswego	34	34	0	34	22,961
Otsego	9	9	0	9	6,730
Putnam	22	23	5	18	24,773
Rensselaer	71	73	1	72	58,956
Rockland	208	214	1	213	110,473
St.Lawrence	35	35	0	35	21,629
Saratoga	10	10	1	9	7,104
Schenectady	84	85	0	85	55,773
Schoharie	6	6	0	6	5,354
Schuyler	8	8	0	8	5,137
Seneca	17	17	0	17	9,882
Steuben	47	47	0	47	23,045
Suffolk	530	534	28	506	402,611
Sullivan	52	52	0	52	23,329
Tioga	5	5	1	4	8,264
Tompkins	86	89	3	86	43,684
Ulster	95	95	2	93	57,137
Warren	10	10	0	10	8,228
Washington	16	16	2	14	11,115
Wayne	43	43	0	43	24,030
Westchester	714	726	0	726	433,754
Wyoming	8	8	0	8	2,006
Yates	1	1	0	1	286

Note: A breakout of Safety Net Assistance - FNP - Cash and Safety Net Assistance - FNP - Non-Cash expenditures is not available for New York City.



Table 15  
SAFETY NET ASSISTANCE - FNP - NON-CASH BY CASE SIZE CATEGORY  
Cases, Recipients, Children, Adults and Expenditures by Local District  
July 2001

Local District	One Person					Multi-Person				
	Cases	Recipients	Children	Adults	Expenditures	Cases	Recipients	Children	Adults	Expenditures
New York State	See Note	See Note	See Note	See Note	See Note	See Note	See Note	See Note	See Note	See Note
New York City	See Note	See Note	See Note	See Note	See Note	See Note	See Note	See Note	See Note	See Note
Rest of State	7,542	7,542	131	7,411	\$3,801,383	121	276	112	164	\$60,963
Albany	2	2	0	2	621	0	0	0	0	0
Allegany	12	12	0	12	2,285	0	0	0	0	0
Broome	144	144	1	143	80,085	2	5	0	5	1,011
Cattaraugus	17	17	1	16	4,887	0	0	0	0	0
Cayuga	22	22	2	20	13,185	1	2	2	0	503
Chautauqua	97	97	0	97	34,440	2	4	2	2	481
Chemung	26	26	0	26	15,168	0	0	0	0	0
Chenango	8	8	0	8	3,554	1	2	2	0	255
Clinton	29	29	1	28	10,938	1	3	2	1	181
Columbia	12	12	0	12	11,098	1	2	2	0	347
Cortland	17	17	1	16	11,373	0	0	0	0	0
Delaware	5	5	0	5	3,519	0	0	0	0	0
Dutchess	197	197	14	183	102,417	4	8	4	4	1,428
Erie	1,202	1,202	1	1,201	376,965	20	42	6	36	6,669
Essex	14	14	2	12	6,103	0	0	0	0	0
Franklin	21	21	1	20	7,749	0	0	0	0	0
Fulton	34	34	0	34	13,264	1	2	1	1	350
Genesee	18	18	1	17	8,301	1	3	3	0	422
Greene	17	17	2	15	9,795	2	4	2	2	624
Hamilton	0	0	0	0	0	0	0	0	0	0
Herkimer	12	12	0	12	6,221	0	0	0	0	0
Jefferson	96	96	2	94	48,625	1	2	0	2	383
Lewis	9	9	0	9	4,082	0	0	0	0	0
Livingston	42	42	0	42	16,503	0	0	0	0	0
Madison	5	5	0	5	4,928	0	0	0	0	0
Monroe	2,024	2,024	3	2,021	912,206	25	67	30	37	12,363
Montgomery	10	10	0	10	1,995	0	0	0	0	0
Nassau	332	332	19	313	197,080	8	21	17	4	4,284
Niagara	289	289	0	289	131,246	3	7	3	4	1,526
Oneida	145	145	1	144	81,075	4	9	4	5	1,222
Onondaga	259	259	19	240	111,151	5	10	4	6	2,025
Ontario	68	68	0	68	60,895	0	0	0	0	0
Orange	266	266	26	240	163,808	11	26	17	9	4,819
Orleans	8	8	1	7	1,630	0	0	0	0	0
Oswego	34	34	0	34	22,961	0	0	0	0	0
Otsego	9	9	0	9	6,730	0	0	0	0	0
Putnam	21	21	4	17	24,481	1	2	1	1	292
Rensselaer	69	69	0	69	58,222	2	4	1	3	734
Rockland	202	202	0	202	106,940	6	12	1	11	3,533
St.Lawrence	35	35	0	35	21,629	0	0	0	0	0
Saratoga	10	10	1	9	7,104	0	0	0	0	0
Schenectady	83	83	0	83	55,322	1	2	0	2	451
Schoharie	6	6	0	6	5,354	0	0	0	0	0
Schuyler	8	8	0	8	5,137	0	0	0	0	0
Seneca	17	17	0	17	9,882	0	0	0	0	0
Steuben	47	47	0	47	23,045	0	0	0	0	0
Suffolk	526	526	21	505	400,546	4	8	7	1	2,065
Sullivan	52	52	0	52	23,329	0	0	0	0	0
Tioga	5	5	1	4	8,264	0	0	0	0	0
Tompkins	83	83	2	81	42,438	3	6	1	5	1,246
Ulster	95	95	2	93	57,137	0	0	0	0	0
Warren	10	10	0	10	8,228	0	0	0	0	0
Washington	16	16	2	14	11,115	0	0	0	0	0
Wayne	43	43	0	43	24,030	0	0	0	0	0
Westchester	703	703	0	703	420,005	11	23	0	23	13,749
Wyoming	8	8	0	8	2,006	0	0	0	0	0
Yates	1	1	0	1	286	0	0	0	0	0

Note: A breakout of One-Person and Multi-Person cases is not available for New York City.

Table 16  
**FOOD STAMPS**  
 Households, Persons and Value of Food Stamps Benefits by Local District  
 July 2001

Local District	Total			Temporary Assistance			Non-Temporary Assistance		
	Households	Persons	Food Stamps Benefits	Households	Persons	Food Stamps Benefits	Households	Persons	Food Stamps Benefits
New York State	663,796	1,315,144	\$114,932,889	472,041	851,406	\$81,051,509	191,755	463,738	\$33,881,380
New York City	427,210	828,388	78,016,276	348,245	645,732	63,595,806	78,965	182,656	14,420,470
Rest of State	236,586	486,756	36,916,613	123,796	205,674	17,455,703	112,790	281,082	19,460,910
Albany	8,317	16,906	1,316,969	4,825	8,384	731,899	3,492	8,522	585,070
Allegany	1,735	3,533	247,410	828	1,313	103,564	907	2,220	143,846
Broome	5,313	10,272	771,048	2,864	4,546	389,761	2,449	5,726	381,287
Cattaraugus	2,729	5,313	363,481	1,173	1,675	137,075	1,556	3,638	226,406
Cayuga	1,972	4,107	309,619	748	1,071	85,896	1,224	3,036	223,723
Chautauqua	5,099	10,790	817,763	2,681	4,488	402,812	2,418	6,302	414,951
Chemung	2,542	5,334	379,798	1,265	2,012	165,440	1,277	3,322	214,358
Chenango	1,585	3,359	235,484	494	684	58,184	1,091	2,675	177,300
Clinton	2,769	5,227	377,775	1,296	1,657	131,290	1,473	3,570	246,485
Columbia	1,297	2,338	170,829	604	856	73,881	693	1,482	96,948
Cortland	1,341	2,707	203,254	618	929	75,828	723	1,778	127,426
Delaware	1,209	2,173	145,379	491	607	46,509	718	1,566	98,870
Dutchess	3,374	6,004	457,292	1,594	2,362	207,637	1,780	3,642	249,655
Erie	35,447	72,201	5,621,019	19,146	32,542	2,899,540	16,301	39,659	2,721,479
Essex	1,077	1,933	122,723	488	624	43,054	589	1,309	79,669
Franklin	1,500	2,995	202,607	638	803	59,152	862	2,192	143,455
Fulton	1,729	3,660	273,485	712	927	76,345	1,017	2,733	197,140
Genesee	1,133	2,283	160,380	479	669	54,284	654	1,614	106,096
Greene	1,243	2,446	183,068	589	904	78,862	654	1,542	104,206
Hamilton	149	212	10,519	26	34	2,224	123	178	8,295
Herkimer	1,757	3,614	257,064	631	851	64,478	1,126	2,763	192,586
Jefferson	3,346	7,297	522,604	1,523	2,343	185,327	1,823	4,954	337,277
Lewis	768	1,635	113,163	260	334	24,030	508	1,301	89,133
Livingston	1,534	2,944	220,864	687	1,072	95,920	847	1,872	124,944
Madison	1,398	2,857	210,553	523	605	46,237	875	2,252	164,316
Monroe	25,672	55,245	4,231,758	15,412	29,169	2,486,122	10,260	26,076	1,745,636
Montgomery	1,737	3,880	299,160	602	799	65,863	1,135	3,081	233,297
Nassau	9,582	16,783	1,316,719	6,005	9,296	788,263	3,577	7,487	528,456
Niagara	5,900	11,819	893,573	3,285	5,616	469,576	2,615	6,203	423,997
Oneida	8,860	18,775	1,391,158	3,922	6,268	522,285	4,938	12,507	868,873
Onondaga	12,601	28,003	2,197,823	6,697	12,318	1,071,441	5,904	15,685	1,126,382
Ontario	2,115	3,856	276,738	965	1,385	119,043	1,150	2,471	157,695
Orange	7,208	18,389	1,487,389	3,214	6,657	589,140	3,994	11,732	898,249
Orleans	1,199	2,672	195,568	561	976	85,193	638	1,696	110,375
Oswego	3,300	7,740	571,969	1,298	1,947	157,485	2,002	5,793	414,484
Otsego	1,155	2,073	142,226	431	483	36,063	724	1,590	106,163
Putnam	476	665	42,705	265	328	21,516	211	337	21,189
Rensselaer	3,651	7,515	595,574	1,774	2,936	264,344	1,877	4,579	331,230
Rockland	4,677	14,862	1,139,512	1,860	3,570	237,386	2,817	11,292	902,126
St. Lawrence	3,342	6,806	486,347	1,598	2,363	195,904	1,744	4,443	290,443
Saratoga	2,561	4,868	351,011	861	919	68,080	1,700	3,949	282,931
Schenectady	3,947	8,431	626,992	1,664	2,508	207,582	2,283	5,923	419,410
Schoharie	719	1,388	96,338	266	303	21,430	453	1,085	74,908
Schuyler	408	804	57,246	187	276	22,897	221	528	34,349
Seneca	798	1,476	99,814	301	409	31,231	497	1,067	68,583
Steuben	2,578	5,409	388,955	1,250	1,968	160,684	1,328	3,441	228,271
Suffolk	13,893	25,059	1,929,692	8,829	14,070	1,169,894	5,064	10,989	759,798
Sullivan	1,988	3,920	269,120	971	1,418	109,789	1,017	2,502	159,331
Tioga	932	1,968	139,379	423	613	50,441	509	1,355	88,938
Tompkins	1,741	3,333	233,469	922	1,389	105,688	819	1,944	127,781
Ulster	3,447	6,225	449,262	1,850	2,788	224,999	1,597	3,437	224,263
Warren	1,464	2,714	199,933	710	1,001	81,617	754	1,713	118,316
Washington	1,485	2,889	205,546	624	782	63,566	861	2,107	141,980
Wayne	2,130	3,754	264,452	933	1,201	99,781	1,197	2,553	164,671
Westchester	15,244	30,665	2,457,824	10,376	18,911	1,628,738	4,868	11,754	829,086
Wyoming	729	1,428	102,997	318	441	37,225	411	987	65,772
Yates	684	1,202	82,214	239	274	23,208	445	928	59,006

Note: Food Stamps households containing only SSI recipients are counted as TA in accordance with Federal reporting requirements.

Note: Rest of State data does not include the following FAP data: 61 households, 72 persons, and \$6,805 in expenditures.

Table 17  
**SUPPLEMENTAL SECURITY INCOME**  
 Recipients, Total Program Expenditures, Federal and State Shares, by Local District  
 July 2001

Local District	Expenditures			
	Recipients	Total	Federal	State
New York State*	637,201	\$292,342,573	\$243,907,325	\$48,435,248
New York City	400,983	192,310,383	164,178,609	28,131,774
Rest of State	225,554	96,364,986	77,326,505	19,038,481
Albany	6,542	2,800,467	2,230,326	570,141
Allegany	1,527	665,755	542,814	122,941
Broome	5,234	2,252,460	1,855,342	397,118
Cattaraugus	2,419	1,067,637	874,428	193,209
Cayuga	1,801	780,808	608,270	172,538
Chautauqua	4,041	1,701,925	1,388,534	313,391
Chemung	2,856	1,245,364	1,032,077	213,287
Chenango	1,380	551,404	463,404	88,000
Clinton	2,565	1,025,029	837,869	187,160
Columbia	1,560	627,973	475,882	152,091
Cortland	1,239	527,251	427,171	100,080
Delaware	1,238	479,813	386,155	93,658
Dutchess	4,495	1,889,256	1,433,840	455,416
Erie	25,813	11,486,749	9,394,606	2,092,143
Essex	993	396,402	290,205	106,197
Franklin	1,633	650,502	516,576	133,926
Fulton	1,716	694,298	547,517	146,781
Genesee	1,025	388,169	304,303	83,866
Greene	1,115	426,493	339,998	86,495
Hamilton	81	27,662	22,908	4,754
Herkimer	1,621	609,815	489,116	120,699
Jefferson	2,950	1,308,939	1,071,752	237,187
Lewis	667	288,398	237,455	50,943
Livingston	963	401,051	335,074	65,977
Madison	1,267	503,131	396,527	106,604
Monroe	18,012	8,269,806	6,771,107	1,498,699
Montgomery	1,340	520,224	417,087	103,137
Nassau	17,189	7,214,352	5,619,864	1,594,488
Niagara	4,975	2,154,334	1,732,270	422,064
Oneida	7,333	3,205,537	2,646,227	559,310
Onondaga	11,613	5,120,110	4,285,012	835,098
Ontario	1,612	684,214	546,976	137,238
Orange	6,101	2,513,793	2,046,423	467,370
Orleans	942	365,748	303,190	62,558
Oswego	2,943	1,225,580	1,030,403	195,177
Otsego	1,362	518,083	391,594	126,489
Putnam	776	326,752	237,204	89,548
Rensselaer	3,222	1,355,714	1,071,517	284,197
Rockland	4,498	1,948,202	1,416,552	531,650
St.Lawrence	3,726	1,578,280	1,316,807	261,473
Saratoga	2,593	1,100,712	887,146	213,566
Schenectady	3,836	1,632,404	1,322,219	310,185
Schoharie	741	292,924	213,715	79,209
Schuyler	523	198,612	155,497	43,115
Seneca	715	270,329	215,041	55,288
Steuben	2,977	1,291,703	1,074,088	217,615
Suffolk	21,535	9,119,777	6,999,472	2,120,305
Sullivan	2,594	1,119,187	833,981	285,206
Tioga	1,038	429,890	364,816	65,074
Tompkins	1,529	660,459	519,596	140,863
Ulster	4,098	1,702,609	1,358,927	343,682
Warren	1,506	569,301	458,978	110,323
Washington	1,498	612,861	497,225	115,636
Wayne	1,841	715,269	572,385	142,884
Westchester	15,018	6,414,234	5,173,730	1,240,504
Wyoming	644	257,995	207,666	50,329
Yates	483	179,240	137,641	41,599
Mental Hygiene	10,664	3,667,204	2,402,211	1,264,993

\* Only NYS includes Mental Hygiene

Table 18  
**SUPPLEMENTAL SECURITY INCOME**  
 SSI Recipients by Living Arrangement and Location  
 July 2001

Living Arrangement	New York State	New York City	Rest of State	Mental Hygiene
Living Alone	329,819	224,699	105,067	53
Living With Others	215,091	134,187	80,879	25
Living in Household of Another	25,359	15,860	9,495	4
Congregate Care Level I	5,995	608	514	4,873
Congregate Care Level II	37,200	14,373	22,311	516
Congregate Care Level III	207	59	147	1
Title XIX Institution	23,530	11,197	7,141	5,192
Total	637,201	400,983	225,554	10,664

Table 19  
**SUPPLEMENTAL SECURITY INCOME**  
 SSI Recipients by Living Arrangement and Category of Assistance  
 July 2001

Living Arrangement	Total	Category of Assistance		
		Aged	Blind	Disabled
Living Alone	329,819	102,556	1,775	225,488
Living With Others	215,091	17,691	1,151	196,249
Living in Household of Another	25,359	10,278	174	14,907
Congregate Care Level I	5,995	327	29	5,639
Congregate Care Level II	37,200	5,364	189	31,647
Congregate Care Level III	207	0	0	207
Title XIX Institution	23,530	4,721	133	18,676
Total	637,201	140,937	3,451	492,813

Table 20  
CHILD SUPPORT COLLECTIONS (IV-D)  
July 2001

Local District	Total	Current Assistance	Former Assistance	Never Assistance
New York State	\$101,659,993	\$10,998,484	\$39,209,411	\$51,452,098
New York City	38,540,432	7,031,413	15,745,310	15,763,709
Rest of State	63,119,561	3,967,071	23,464,101	35,688,389
Albany	1,772,956	88,390	547,829	1,136,737
Allegany	404,318	37,831	225,293	141,194
Broome	1,191,979	64,634	486,303	641,042
Cattaraugus	661,945	55,286	321,381	285,278
Cayuga	602,097	18,902	233,088	350,107
Chautauqua	1,171,484	89,052	726,718	355,714
Chemung	742,501	40,356	297,034	405,111
Chenango	403,962	20,195	142,060	241,707
Clinton	588,881	25,707	263,483	299,691
Columbia	363,135	13,305	140,050	209,780
Cortland	409,422	19,937	153,256	236,229
Delaware	336,949	10,494	121,403	205,052
Dutchess	1,747,796	74,452	493,080	1,180,264
Erie	4,524,299	381,446	2,372,369	1,770,484
Essex	307,430	15,712	186,674	105,044
Franklin	409,337	9,869	179,863	219,605
Fulton	452,677	15,235	178,210	259,232
Genesee	400,046	16,063	148,558	235,425
Greene	346,929	16,357	134,341	196,231
Hamilton	31,269	288	12,921	18,060
Herkimer	496,257	22,034	233,595	240,628
Jefferson	891,090	51,299	356,833	482,958
Lewis	201,886	4,882	71,002	126,002
Livingston	523,192	24,501	192,528	306,163
Madison	417,730	13,581	171,809	232,340
Monroe	4,269,219	490,402	1,883,481	1,895,336
Montgomery	379,321	17,561	160,673	201,087
Nassau	5,451,116	243,532	1,315,400	3,892,184
Niagara	1,361,418	115,792	718,983	526,643
Oneida	1,101,613	91,284	531,023	479,306
Onondaga	3,085,577	200,140	1,448,786	1,436,651
Ontario	826,478	40,475	275,346	510,657
Orange	2,064,635	141,055	561,615	1,361,965
Orleans	265,247	15,801	134,523	114,923
Oswego	994,167	44,416	502,644	447,107
Otsego	371,611	7,764	121,944	241,903
Putnam	432,767	8,323	75,753	348,691
Rensselaer	1,123,302	51,307	390,798	681,197
Rockland	1,440,554	65,413	428,334	946,807
St. Lawrence	782,787	41,848	403,419	337,520
Saratoga	1,200,886	26,858	244,004	930,024
Schenectady	1,037,932	45,595	309,504	682,833
Schoharie	249,919	12,200	96,972	140,747
Schuyler	122,192	4,649	38,573	78,970
Seneca	274,906	10,111	88,757	176,038
Steuben	709,632	38,823	356,478	314,331
Suffolk	7,759,559	499,704	2,182,178	5,077,677
Sullivan	465,402	36,792	170,755	257,855
Tioga	365,432	25,724	168,546	171,162
Tompkins	464,617	21,297	197,672	245,648
Ulster	1,009,837	52,003	314,503	643,331
Warren	585,239	22,394	188,211	374,634
Washington	491,330	18,520	170,248	302,562
Wayne	711,313	22,575	225,776	462,962
Westchester	3,855,847	407,453	1,180,232	2,268,162
Wyoming	289,634	13,202	118,792	157,640
Yates	176,505	4,250	70,497	101,758

Note: Effective February 1999, collection amounts include collections made on behalf of other states.