

OVALPOOL ——重塑伦敦格拉芙那广场设计竞赛方案，伦敦，英国

OVALPOOL:
Shaping London’s Global Square, Call for Ideas to Reimagine Grosvenor Square, London, UK
朱文一
ZHU Wenyi

简况
地点：伦敦，英国
时间：2018 年 7—10 月
主办：www.cornertocorner.london
项目：重塑伦敦格拉芙那广场设计竞赛

团队
主创建筑师：朱文一
成员：冉展，杨艺瑶

Facts
Location: London, UK
Time: July - October 2018
Host: www.cornertocorner.london
Program: Shaping London’s Global Square, Call for Ideas to Reimagine Grosvenor Square

Design Team
Chief Architect: ZHU Wenyi
Team Member: RAN Zhan, YANG Yiyao



朱文一（清华大学）
ZHU Wenyi, Tsinghua University, Beijing, China

参考文献引用格式：
朱文一. OVALPOOL: 重塑伦敦格拉芙那广场设计竞赛方案，伦敦，英国 [J]. 城市设计, 2019(3): 90-97.
ZHU W. OVALPOOL: Shaping London's global square, Call for ideas to reimagine Grosvenor Square, London, UK [J]. Urban Design, 2019(3): 90-97.

收稿日期：2019年05月25日
Received Date: May 25, 2019

格拉芙那广场始建于 1720 年，位于梅菲尔 (Mayfair) 中心，海德公园东侧、牛津街南面，是伦敦第二大花园广场。近 20 年来，这座著名的广场由于种种原因活力不够，与伦敦市民的期望有了不小的差距。2017 年，名为“塑造广场” (Shape the Square) 的活动调查了超过 1,000 名伦敦人，通过访谈等方式了解民众对未来广场的看法并进行分析，可以归纳为明晰度 (Clarity)、与周边关联 (Context)、差异度 (Contrast)、包容度 (Company) 和魅力度 (Colour) 5 项指标。2018 年题为“重塑伦敦格拉芙那广场”的公开国际竞赛举行。朱文一工作室提交的“椭圆环泳池” (OvalPool) 设计方案在传承性、独特性、最小干扰性和城市关联性 4 个方面探索了格拉芙那广场的未来可能性。

首先是传承性。椭圆环形状源自历史上椭圆形广场铺装设计 (图 1)。新颖的空中泳池底部材料为全反射的镜面，最大限度地减小了泳池本身的存在感。这不仅是尊重历史的一种方式，更探索了一种健康城市生活方式。

其次是独特性。通过在梅菲尔中心建造一座高 35m、宽 10m、周长为 400m 的空中游泳

池及散步道，OvalPool 设计方案创造了体验城市天际线的全新方式，同时也探索了一种新的公共广场类型 (图 2—图 3)。可以想象市民和游客在空中游泳时欣赏美丽的伦敦城市轮廓线所体验到的独特享受 (图 4)。

第三是最小干扰性。OvalPool 设计方案完全尊重并保留现状树木、纪念碑、雕像、小径等广场上的一切存在，将所有历史信息传递至未来。空中泳池的支撑结构为大量直径只有 20cm 的细圆柱和少量直径 1.5m 的圆柱状垂直电梯。细小的结构以及反射周边的镜面表皮实现了整座空中泳池对现状场地的最小干扰 (图 5—图 10)。

第四是城市关联性。通过对伦敦城市中心区水系的分析可知，泰晤士河、蛇形丽都、圆形池塘、戴安娜纪念喷泉、圣詹姆斯公园的湖泊等水景构成了伦敦城市完整的水系统，成为伦敦充满活力的积极要素。OvalPool 设计方案在东西轴线上增加一处空中椭圆环泳池是锦上添花，尝试发掘和彰显伦敦城中心水系统的特征 (图 11—图 12)。

在卫星地图上万能视角下，OvalPool 方案的椭圆环形将呈现出强烈的识别性。□



图1 / Figure 1
1827年伦敦地图上的格拉芙那广场
Grosvenor Square on Map of London (1827)
来源: John Greenwood

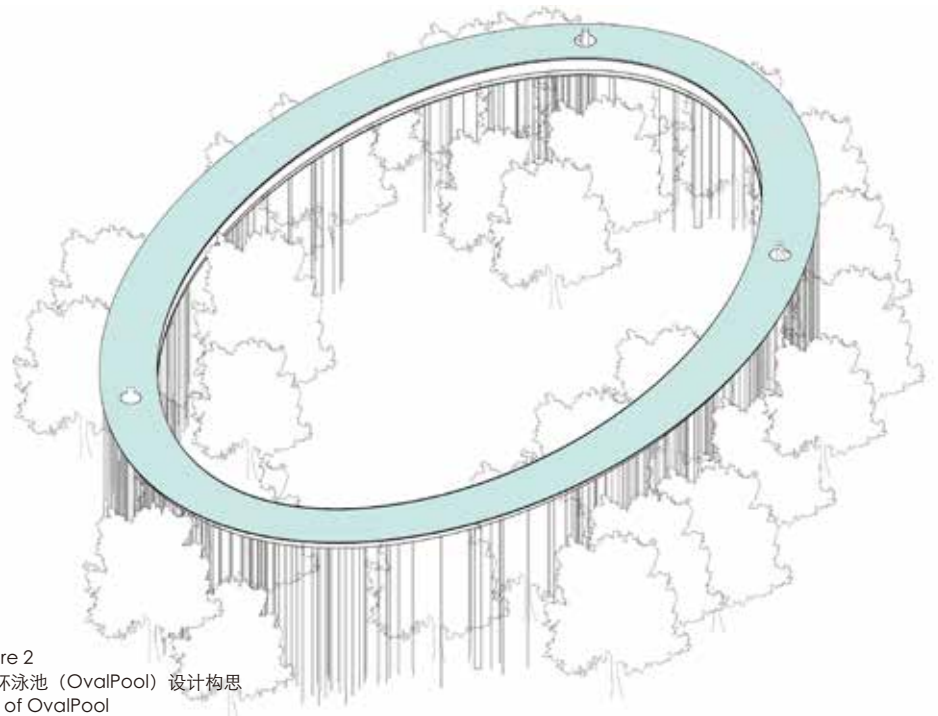


图2 / Figure 2
空中椭圆环泳池 (OvalPool) 设计构思
Concept of OvalPool

FULL TEXTS TRANSLATED FROM CHINESE

Founded in 1720, Grosvenor Square is located at the the east side of Hyde Park and the south of Oxford Street, the second largest garden square in London. In the past years, this famous square has not been energetic enough to satisfy the city residents and tourists. In 2017, the event called Shape the Square surveyed more than 1,000 Londoners and used interviews to understand the public opinions of the future square. It can be summarized as Clarity, Context, Contrast, Company, and Colour. In 2018, an open international competition entitled “Reshaping London’s Grosvenor Square” was held. The “OvalPool” design proposal, a sky swimming pool, submitted by ZHUWENYI Atelier explores the future possibilities of Grafner Square in terms of uniqueness, minimum interference, inheritance and urban context.

The first is inheritance. The elliptical ring shape is derived from the historic oval square pavement design (Figure 1, 2). The bottom material of the sky swimming pool is a fully reflective mirror that minimizes the presence of the pool itself. This

is not only a way of respecting history, but also a healthy urban lifestyle.

The second is the uniqueness. By building a 35m high, 10m wide, 400m perimeter air swimming pool and promenade in the city center, the Oval-Pool creates a new way to experience the city skyline while also exploring a new typology of public plaza (Figure 3). We can imagine the unique enjoyment of the beautiful London city skyline when city residents and tourists swim in the air (Figure 4).

The third is the minimum interference. The Oval-Pool fully respects and preserves the existence of existing trees, monuments, statues, trails and others, and transmits all historic traces to the future. The supporting structure of the sky swimming pool is a large number of thin cylinders with a diameter of only 20 cm and a small number of cylindrical vertical elevators with a diameter of 1.5 m. The small structure and the mirrored skin around the reflections minimize the interference of the entire sky pool (Figure 5 - Figure 10).

The fourth is urban context. Through an analysis of the water system in central area of London, the waters of the Thames, Serpentine Lido, Round Pond, Diana Memorial Fountain, and Lake St. James Park form the complete water system of London’s city and become a vibrant and active London. Elements. The OvalPool proposes an air elliptical-ring pool to the east-west axis of Hyde Park, being added to the brilliance of the water system in the city center (Figures 11, 12).

On the satellite map, the OvalPool elliptical ring will be easily recognized (Figure 13). □

图片来源
Figure Sources

文中图片均为朱文一工作室提供。
All figures are provided by ZHUWENYI Atelier.



图3 / Figure 3
空中椭圆环泳池设计方案
Proposal OvalPool





图4 / Figure 4
通过游泳体验伦敦城市天际线
Experiencing the London skyline through swimming



图5 / Figure 5
夏天的广场
Square in Summer



图6 / Figure 6
立面图 / Elevation

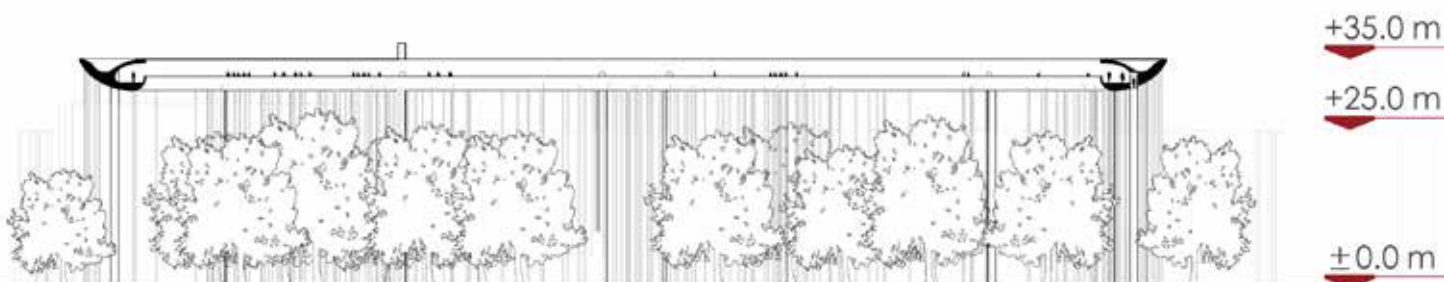


图7 / Figure 7
剖面图 / Section



图8 / Figure 8
冬天的街景
Streetscape in Winter



图9 / Figure 9
地面层平面 / Ground Plan

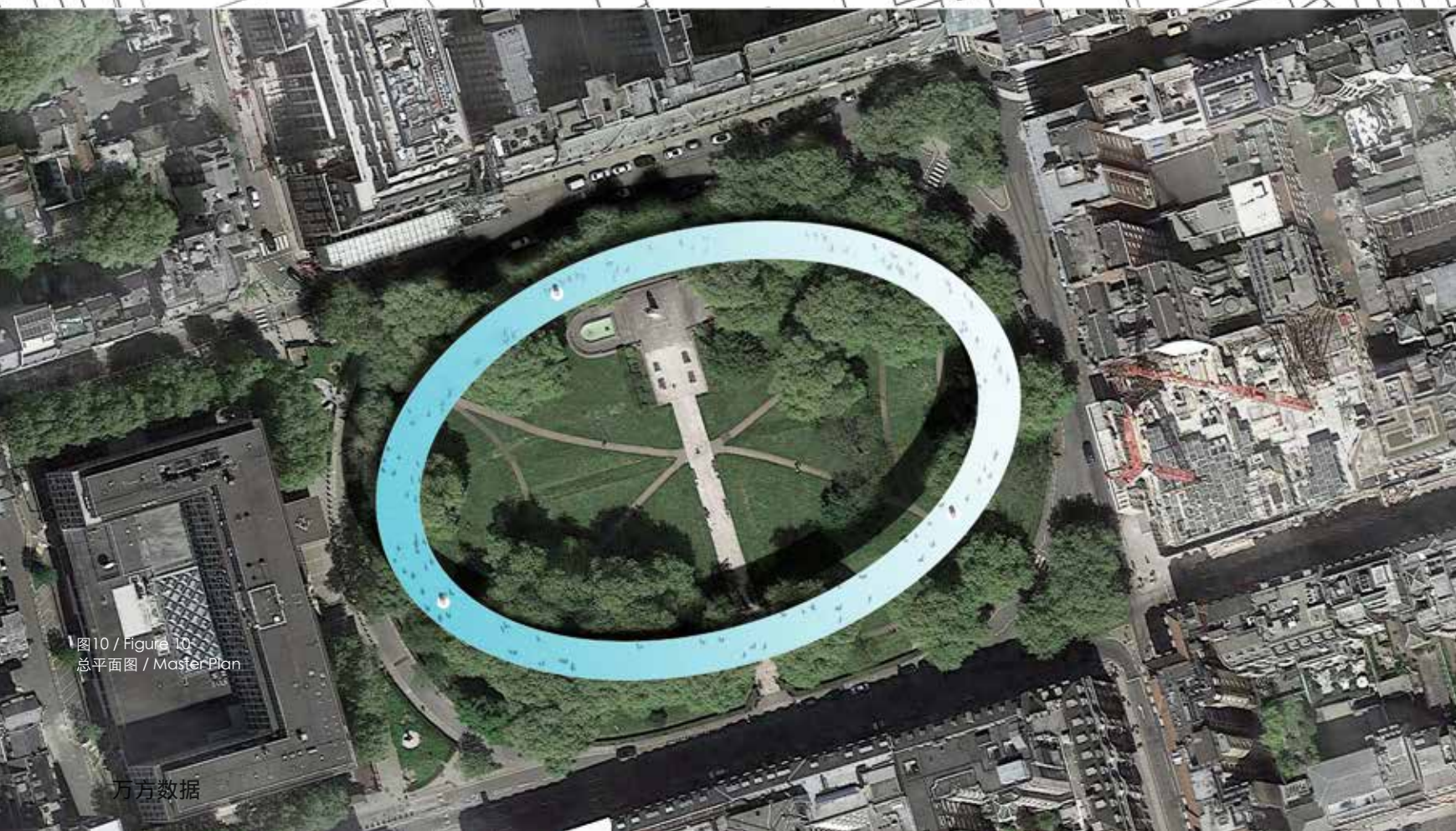


图10 / Figure 10
总平面图 / Master Plan



图11 / Figure 11
伦敦城市中心区水景系统分析
Analysis of the Waterscape System in London City Center



图12 / Figure 12
伦敦城市中心区水景系统
Waterscape System in London City Center