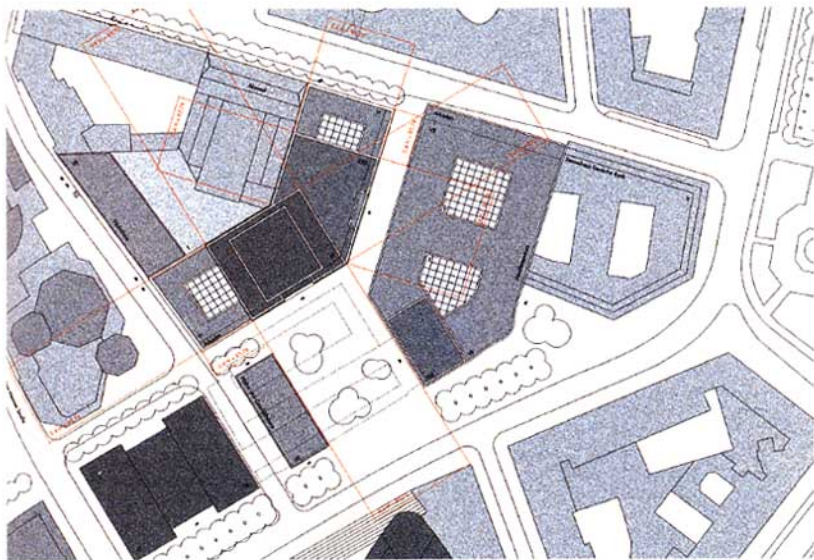


法兰克福 MAX 高层综合楼，德国

HIGH BUILDING MAX, FRANKFURT, GERMANY



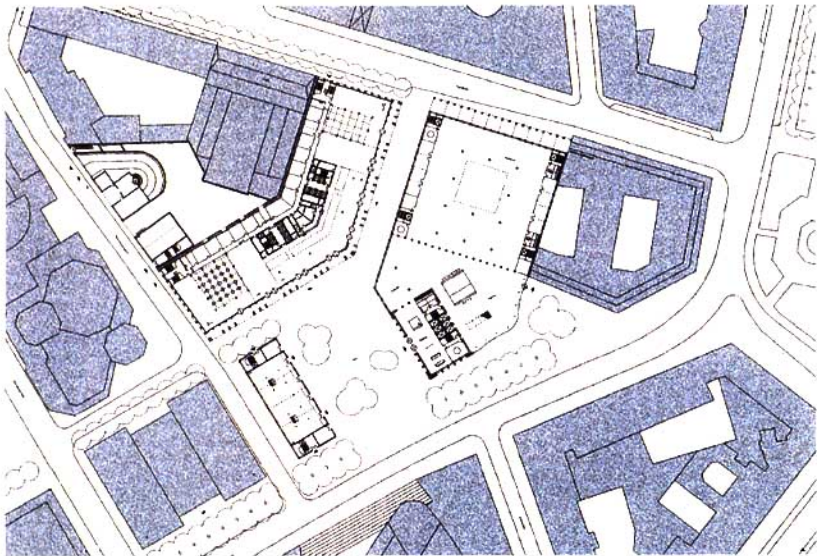
1 总图
2 整体效果图

新建的 MAX 高楼使历史生长的城市结构和已经建成的围绕商业银行的高层建筑区融汇一体。各种不同尺度的共生、交织、重叠是该设计的主题。大楼的基座是历史街区建筑轮廓的反映，14层和26层的两部分建筑是对过去几十年来法兰克福几代高层建筑的综合，200m高的大楼在高层建筑群中一跃而起并以一个典雅的顶部结束。

该高层的体块由两个彼此斜交，并照应原有街区的几何形体的构成，较矮的塔楼入口朝向罗斯集市，较高的塔楼入口朝向新建广场，塔楼外围有拱廊，内部有一个贯通3层的中庭，三层的立面材料采用浅棕色陶砖。□

The new construction, high-rise MAX Building makes the urban structure growing in history integral with the built high-rise area around the commercial bank. The theme of the design is derived from intergrowth, interweaving, overlapping of all different scales. The basis of the building reflects the figure of the architecture in the historical area. 14-storey volume and 26-storey volume are the "synthesis" of many generations of high-rise buildings in the past decades in Frankfurt. The 200 meter-high building rises from the around high-rise building group and ends in an elegant crest.

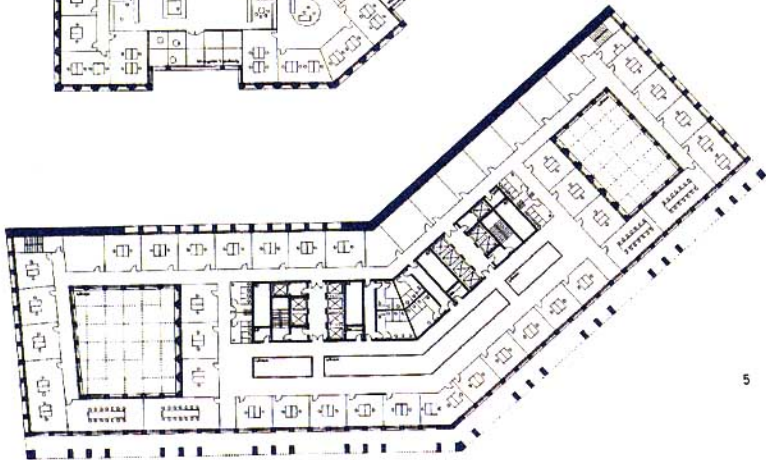
The high-rise building is composed of two volumes which cross obliquely and make reference to the geometric composition of the former block. The entrance of the lower is toward Rossmarkt and of the higher one is toward new plaza. There are arcades on the periphery of the tower, inside is a Hall with 3-storey, the facade with 3-storey is clad with maple earthenware. □



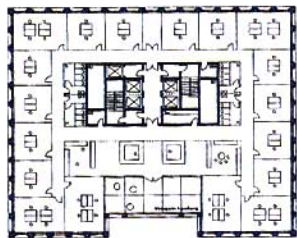
3



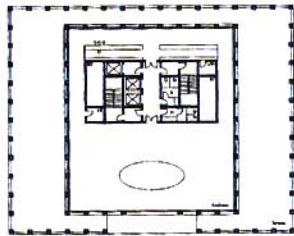
4



5

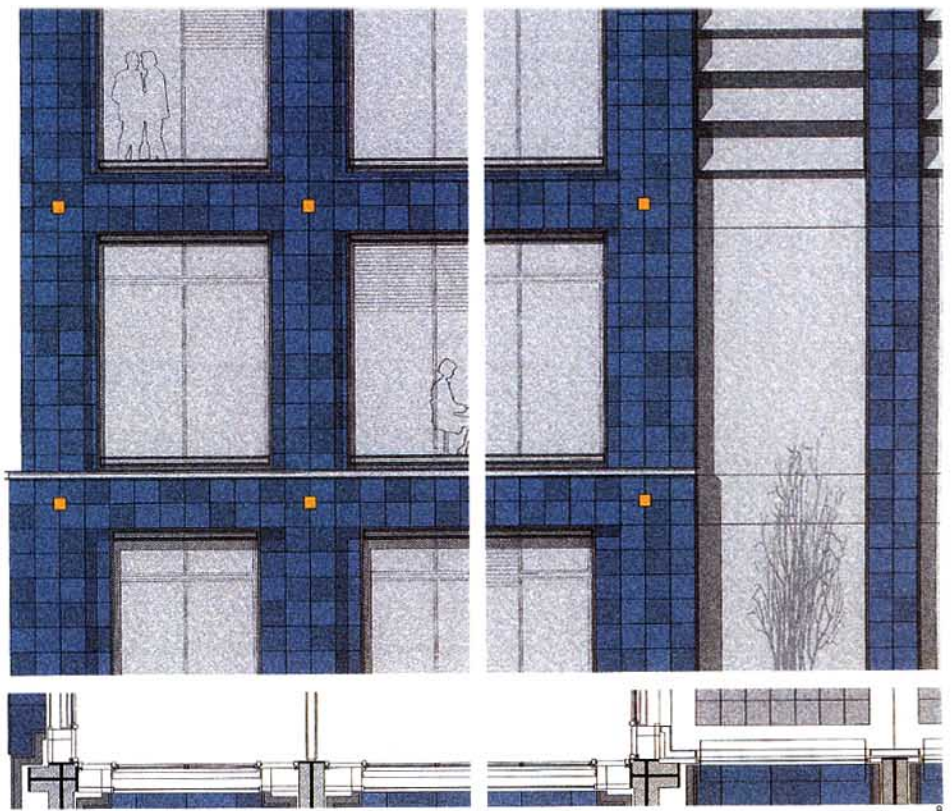
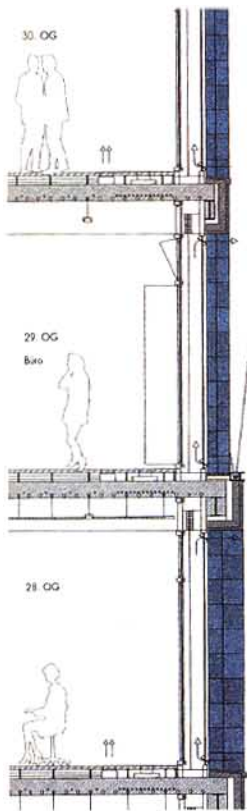


6

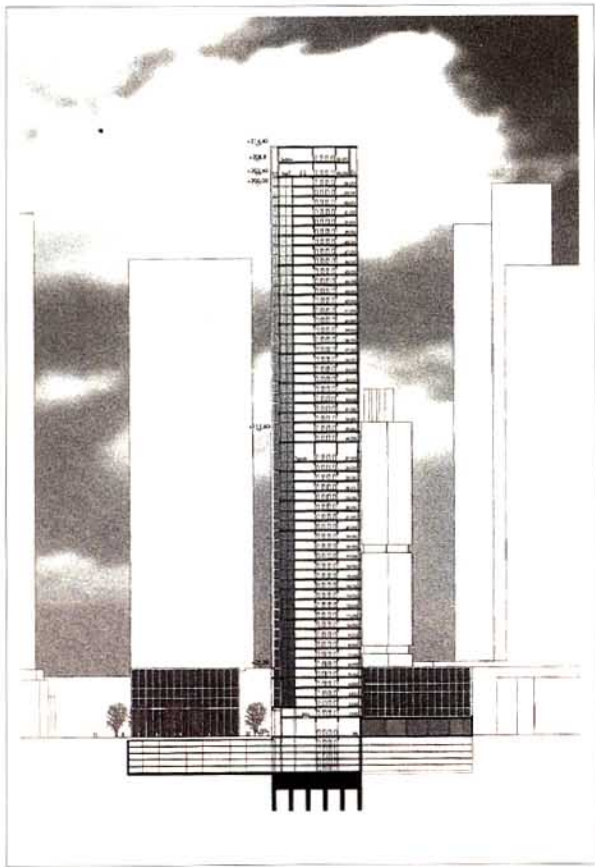


7

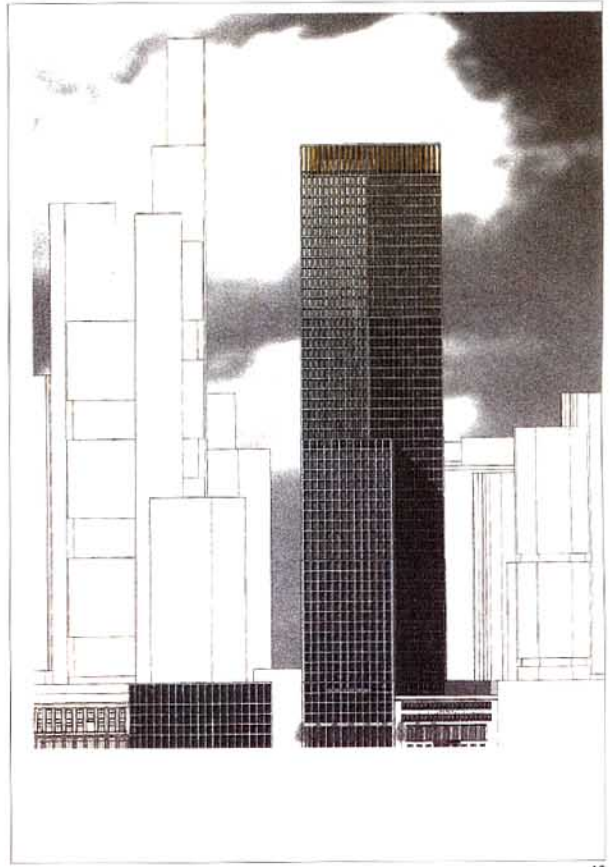
- 3 一层平面
- 4 29-55层平面
- 5 6-28层平面
- 6, 7 56层平面
- 8 立面细部构造
- 9 剖面
- 10 立面



8



9



10