

英国伦敦 Aloft 酒店国际会展中心店

Aloft Hotel Excel, London, UK

■ Jestico + Whiles 建筑设计事务所 钱辰伟 译 ■ Jestico + Whiles Translated by Qian Chenwei

喜达屋酒店及度假村国际集团 (Starwood Hotels & Resorts) 旗下进驻伦敦的首座 Aloft 酒店正是刚刚投入运营的 ExCeL 国际会展中心店。Jestico + Whiles 事务所承担建筑及室内设计工作。酒店设有客房 252 间, 1 间“wxyz”酒吧, 1 间内设体育馆和儿童戏水池的健身房, 一处 24 小时营业的一站式食物和饮料外卖区, 5 间会议室, 此外还有 1 间全新“FEDE”概念餐厅, 由 Elixir 公司单独运营。

贯穿酒店平面中央的是一个 S 型凸面带状空间体, 其中容纳了客房和垂直交通系统, 两侧有一个凹面条状空间体与其相接, 囊括了更多的卧室和走廊, 这两个侧翼结构的表皮由数千块经过特殊处理、

反光效果良好的不锈钢面板构成, 营造出非同寻常的视觉效果。随着时间的流转变换着色彩。

酒店中央带空间覆以定制的双层玻璃表皮, 其上装饰有半透明的彩釉图案和背面涂层的坚固拱桥楼板。受 Bridget Riley 某些绘画作品立体效果的启发, 设计师们以熔结在玻璃里的抽象横纹来强调建筑的流动性。再配合新月形侧翼表面变幻的色彩, 建筑的流动性和立体感更加突出。

基地所处的国际展览中心周边复杂的市政基础设施给设计带来很多制约, 建筑师利用“蛇形”空间布局减少了内部走廊的长度, 也使得中央的核心候梯厅享有自然光, 同时也很好地满足了业主对于不同规格房间的要求。为了满足酒店交通分流的要求——二层为由 ExCeL 国际会展中心至此的主要步行通道, 地面层为车辆通道, 建筑师在该栋建筑的中心位置设计了一个宽敞的、双层贯通的接待大厅, 并以一个具有雕塑感的螺旋状楼梯将上下两层

连接。

酒店内部空间的设计延续了外部设计的线条感和丰富色彩, 客房区的走廊以创新性的饰面和定制的有色透光板装饰, 让人联想起了外立面处理手法, 在内外空间之间营造了一种连贯性。内部空间以精心挑选的木材、人造理石、玻璃、陶瓷和带有花纹的壁纸进行装饰, 并在公共空间以精致的艺术品加以点缀。事务所特别调整、拓展了设计业务, 力求为 Aloft 酒店提供量身定制的设计。

建筑事务所总监 John Whiles 表示: “Aloft 酒店的开业, 对事务所来说是令人激动的时刻。整个过程不断对我们惯常遵守的酒店设计标准提出挑战, 戏剧性地整合了材料与活动, 并将室内个作为整体来对待。酒店明显丰富了人们对该地区的体验, 在这个国际会议中心的重要入口处创造出一种标志性的场所感, 这对于伦敦的未来也是非常重要的。”

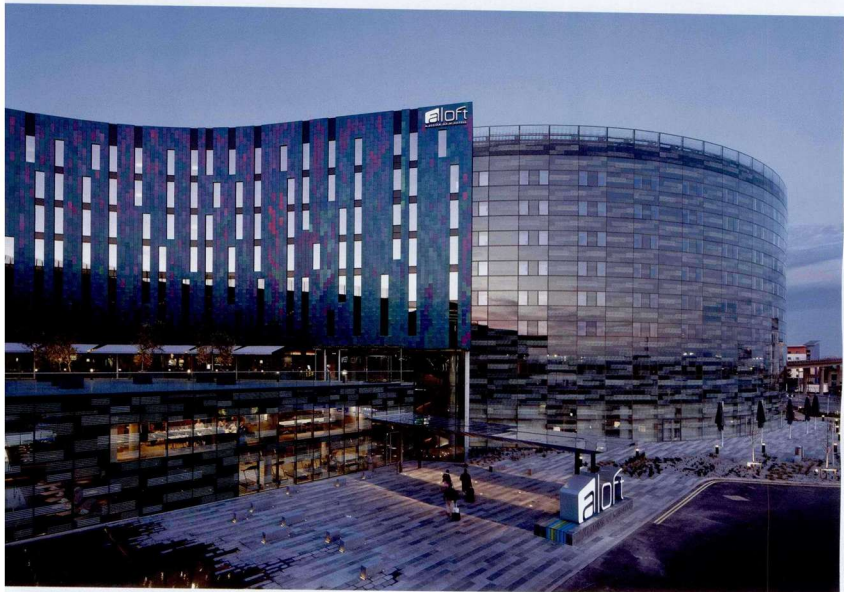
本项目获 BREEAM 优评级

作者单位: Jestico + Whiles 建筑设计事务所
(www.jesticowhiles.co.uk)

收稿日期: 2012-01-06



1 酒店全景



酒店及入口广场

Starwood Hotels & Resorts has opened the first Aloft Hotel in the UK at ExCeL London. Jestico + Whiles' innovative design for the architecture and interiors provides 252 guest bedrooms; an exciting 'wxyz™ bar'; a recharge™ fitness suite with gym and Splash™ pool; refuel by Aloft™ a one stop, 24-hour grab and go-food and beverage area; five 'Tactic' meeting rooms; together with a new restaurant concept restaurant 'FEDE' separately operated by Elixir.

The plan of the building has a convex central spine containing bedrooms and the vertical circulation, flanked by two concave wings which house further bedrooms and corridors. These wings are clad in thousands of specially treated, highly reflective stainless-steel shingles creating the extraordinary effect of constantly changing colour with the passing of the day.

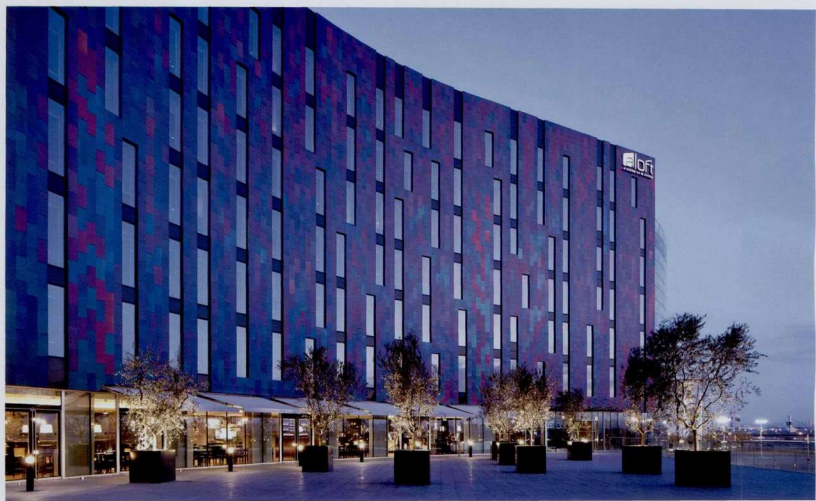
The central spine of the hotel has been finished with a bespoke, double-glazed cladding, which features a translucent ceramic frit pattern and solid back-painted spandrel panels. Inspired by the illu-

sion of depth seen in some of Bridget Riley's paintings, abstract horizontal stripes fritted onto the glass have been designed to emphasise the flow of the building. This creates an unusual interplay of movement and depth when combined with the undulating colours of the crescent wings.

The building's 'serpentine' layering reduces internal corridor lengths and brings natural daylight into the central lift core lobby whilst addressing the site restrictions generated by complex service infrastructure surrounding the exhibition centre. The form also enables the variety of room sizes demanded by the client's brief to be elegantly accommodated. In response to the split-level access requirements of the hotel, with the main pedestrian route emerging from ExCeL on the first floor and the vehicular access on the ground level, Jestico + Whiles has designed a spacious, double height atrium reception in the centre of the building with a bespoke, sculptural spiral stairway linking the two levels.

Jestico + Whiles' treatment of the internal

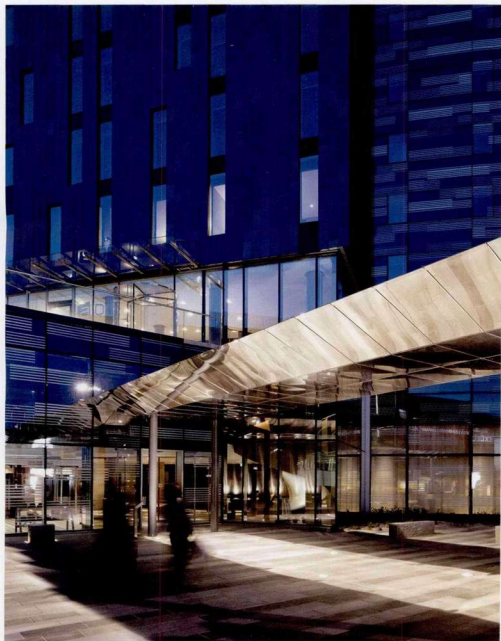
spaces continues the linear, multi-coloured motif of the external design. Innovative finishes and bespoke coloured light panels, reminiscent of the facade treatment, decorate the guestroom corridors, creating cohesion between the internal and external spaces. The interiors have been furnished with a carefully selected palette of timber, Corian®, glass, porcelain and textured wallpaper, with selected artworks decorating the public spaces. The firm has specifically tuned and developed the interior design to evolve the Aloft guidelines into a site-specific design. John Whiles, Director of Jestico + Whiles said: "The opening of Aloft London ExCeL is an exciting moment for the practice. The building continues our challenge to the accepted norms of hotel design through the integration of the theatre of materials and activity where the architecture and interior design become one holistic treatment. The hotel clearly enhances the experience of the location to create an iconic sense of place at this important entrance to the International Conference Centre, so vital to the future of London."



4 酒店前广场



5 体量示意



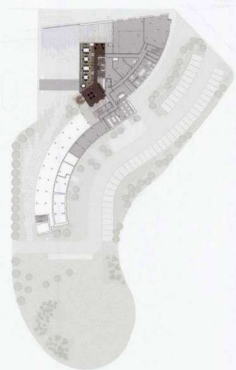
6 酒店入口



7 大堂



8 一层平面



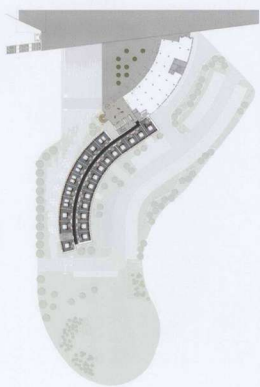
9 二层平面



10 旋转楼梯



11 大堂吧



12 三层平面



13 四层平面



14 休闲区



15 wxyz 酒吧



16 大堂一角

项目概况

项目名称：英国伦敦 Aloft 酒店国际会展中心店
 业主：ExCel London (part of ADNEC)
 投资：阿布扎比国家展览公司
 酒店管理：喜达屋饭店及度假村国际集团
 建设地点：英国，伦敦，皇家码头
 设计单位：Jestico + Whites
 用地面积：0.95hm²
 建筑面积：14 000m²
 项目负责人：John Whiles
 建筑设计：Jestico + Whites
 结构设计：McAleer & Rushe
 设计时间：2010 年
 建成时间：2011 年
 图纸版权：Jestico + Whites
 摄影：Tim Crocker